



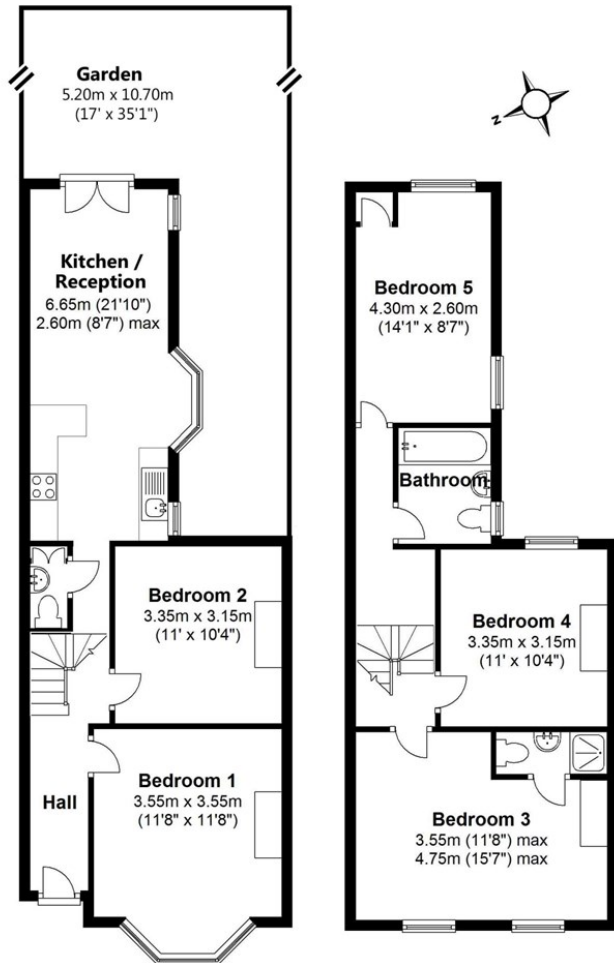
PCM

**£4,100 PCM**

**Lanvanor Road**

London, SE15 2BT

**GARETH  
JAMES**



Ground Floor

First Floor

Total area: approx. 102.6 sq. metres (1104.0 sq. feet)



| Energy Efficiency Rating                    |   | Current                 | Potential |
|---|---|-------------------------|-----------|
| Very energy efficient - lower running costs |   |                         |           |
| (92 plus)                                   | A |                         | 85        |
| (81-91)                                     | B |                         |           |
| (69-80)                                     | C |                         |           |
| (55-68)                                     | D | 64                      |           |
| (39-54)                                     | E |                         |           |
| (21-38)                                     | F |                         |           |
| (1-20)                                      | G |                         |           |
| Not energy efficient - higher running costs |   |                         |           |
| England & Wales                             |   | EU Directive 2002/91/EC |           |

Agents Note: Whilst every care has been taken to prepare these particulars, they are for guidance purposes only. All measurements are approximate and are for general guidance purposes only and whilst every care has been taken to ensure their accuracy, they should not be relied upon and potential buyers/tenants are advised to recheck the measurements

**GARETH  
JAMES**

OFFICE ADDRESS  
129 Bellenden Road  
London  
SE15 4QY

OFFICE DETAILS  
02077324330  
lettings@garethjames.com  
<https://www.garethjames.com/>