



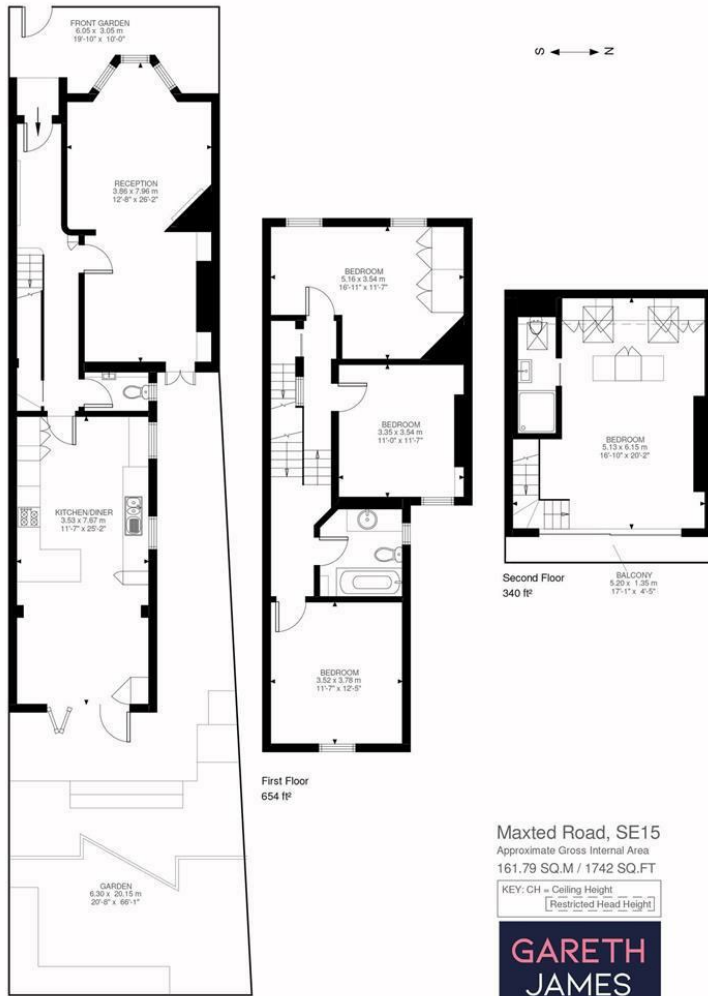
PER MONTH

£4,500 Per Month

Maxted Road

London, SE15 4LL

**GARETH
JAMES**



Maxted Road, SE15
 Approximate Gross Internal Area
 161.79 SQ.M / 1742 SQ.FT

KEY: CH = Ceiling Height
 [Restricted Head Height]

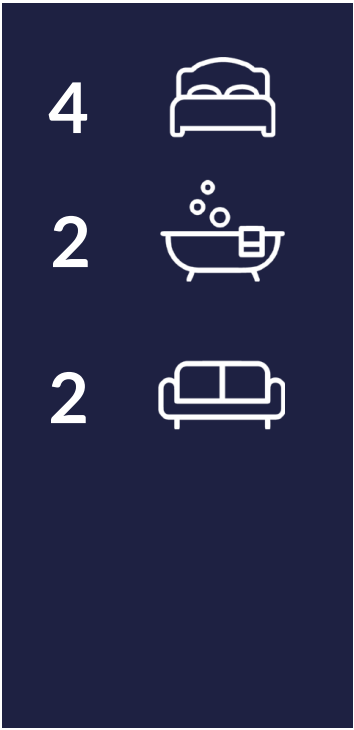


Ground Floor
 748 ft²

First Floor
 654 ft²

Second Floor
 340 ft²

Illustration for identification purposes only. Not to scale.
 Floor Plan Drawn According To RIGS Guidelines.



Energy Efficiency Rating		Current	Potential
Very energy efficient - lower running costs			
(92 plus)	A		
(81-91)	B		
(69-80)	C		
(55-68)	D		
(39-54)	E		
(21-38)	F		
(1-20)	G		
Not energy efficient - higher running costs			
England & Wales		EU Directive 2002/91/EC	

Agents Note: Whilst every care has been taken to prepare these particulars, they are for guidance purposes only. All measurements are approximate and are for general guidance purposes only and whilst every care has been taken to ensure their accuracy, they should not be relied upon and potential buyers/tenants are advised to recheck the measurements

**GARETH
 JAMES**

OFFICE ADDRESS
 129 Bellenden Road
 London
 SE15 4QY

OFFICE DETAILS
 02077324330
 lettings@garethjames.com
 https://www.garethjames.com/