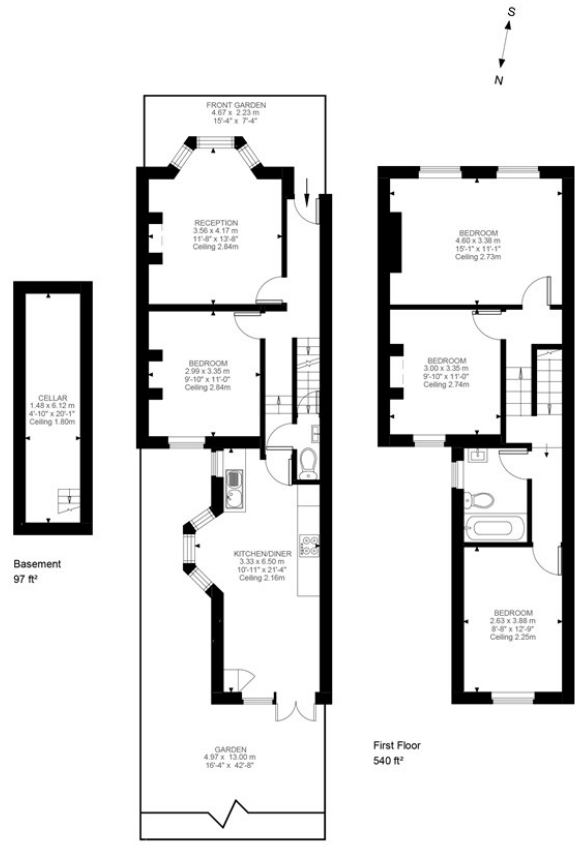




PER MONTH

£4,750 Per Month
Wigglesworth Street
London, SE14 5EG

GARETH
JAMES

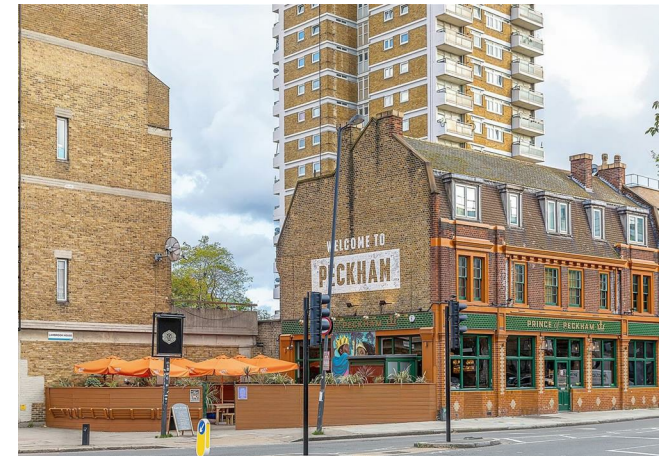


Wigglesworth Street, SE14
Approximate Gross Internal Area
111.32 SQ.M / 1198 SQ.FT
KEY: CH = Ceiling Height
[Restricted Head Height]

Illustration for identification purposes only. Not to scale.
Floor Plan Drawn According To RIGS Guidelines.



Energy Efficiency Rating		Current	Potential
Very energy efficient - lower running costs			
(92 plus)	A		87
(81-91)	B		
(69-80)	C		
(55-68)	D	67	
(39-54)	E		
(21-38)	F		
(1-20)	G		
Not energy efficient - higher running costs			
England & Wales		EU Directive 2002/91/EC	



Agents Note: Whilst every care has been taken to prepare these particulars, they are for guidance purposes only. All measurements are approximate and are for general guidance purposes only and whilst every care has been taken to ensure their accuracy, they should not be relied upon and potential buyers/tenants are advised to recheck the measurements

**GARETH
JAMES**

OFFICE ADDRESS
129 Bellenden Road
London
SE15 4QY

OFFICE DETAILS
02077324330
lettings@garethjames.com
<https://www.garethjames.com/>