



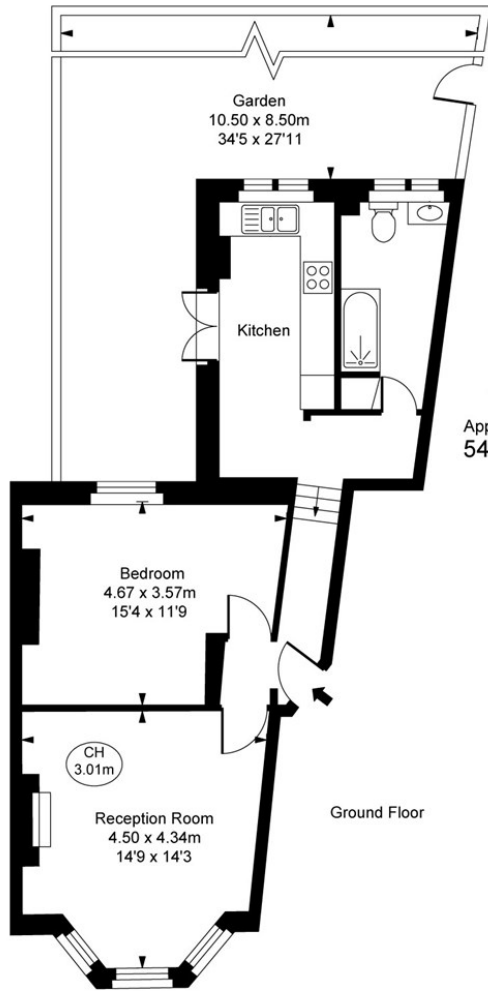
PCM

£1,950 PCM

York Grove

London, SE15 2NY

**GARETH
JAMES**



York Grove, SE15
 Approximate Gross Internal Area
 54.72 sq m / 589 sq ft
 (CH = Ceiling Heights)

ILLUSTRATION FOR IDENTIFICATION PURPOSES ONLY
 ALL MEASUREMENTS ARE MAXIMUM, AND INCLUDE WINDOW BAYS AND WARDROBES WHERE APPLICABLE
 THIS PLAN MUST NOT BE REPRODUCED BY ANY OTHER PERSON WITHOUT PERMISSION



Energy Efficiency Rating		Current	Potential
Very energy efficient - lower running costs			
(92 plus) A			
(81-91) B			
(69-80) C			
(55-68) D			
(39-54) E		46	59
(21-38) F			
(1-20) G			
Not energy efficient - higher running costs			
England & Wales		EU Directive 2002/91/EC	

Agents Note: Whilst every care has been taken to prepare these particulars, they are for guidance purposes only. All measurements are approximate and are for general guidance purposes only and whilst every care has been taken to ensure their accuracy, they should not be relied upon and potential buyers/tenants are advised to recheck the measurements

**GARETH
 JAMES**

OFFICE ADDRESS
 129 Bellenden Road
 London
 SE15 4QY

OFFICE DETAILS
 02077324330
 lettings@garethjames.com
 https://www.garethjames.com/