



PER CALENDAR MONTH

£1,300 Per Calendar Month

Rye Lane

London, SE15 4RZ

**GARETH
JAMES**



First Floor
655 ft²

Second Floor
657 ft²

Third Floor
650 ft²



Ground Floor
103 ft²

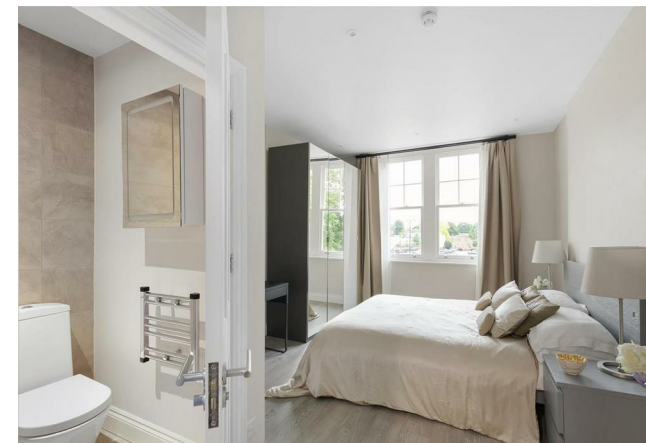
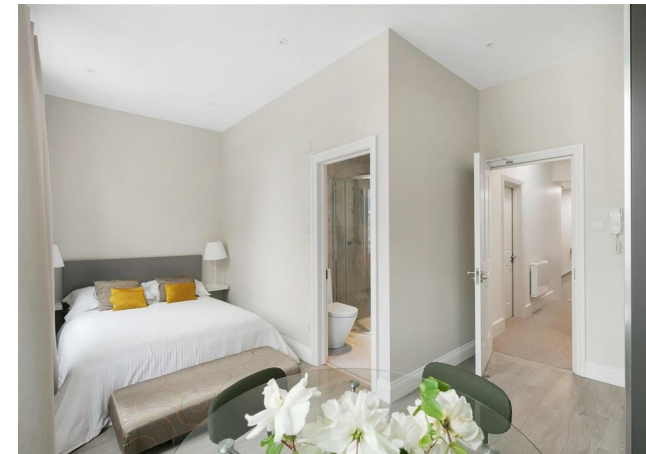
Rye Lane, SE15
Approximate Gross Internal Area
191.83 SQ.M / 2065 SQ.FT
KEY: CH = Ceiling Height
[Restricted Head Height]

GARETH JAMES

Illustration for identification purposes only. Not to scale.
Floor Plan Drawn According To RICS Guidelines.



Energy Efficiency Rating		Current	Potential
Very energy efficient - lower running costs			
(92 plus)	A		
(81-91)	B		
(69-80)	C		
(55-68)	D		
(39-54)	E		
(21-38)	F		
(1-20)	G		
Not energy efficient - higher running costs			
England & Wales			
			EU Directive 2002/91/EC
		47	78



Agents Note: Whilst every care has been taken to prepare these particulars, they are for guidance purposes only. All measurements are approximate and are for general guidance purposes only and whilst every care has been taken to ensure their accuracy, they should not be relied upon and potential buyers/tenants are advised to recheck the measurements

GARETH JAMES

OFFICE ADDRESS
129 Bellenden Road
London
SE15 4QY

OFFICE DETAILS
02077324330
lettings@garethjames.com
<https://www.garethjames.com/>