



PER MONTH

£1,850 Per Month

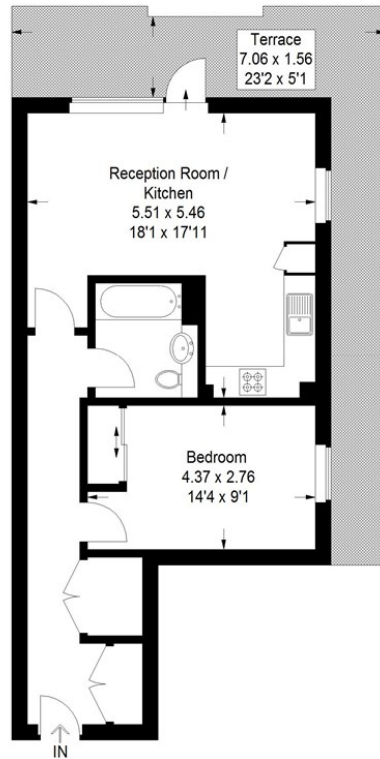
Carlton Grove

London, SE15 2UE

**GARETH
JAMES**

Pennyblack Court, SE15

Approximate Gross Internal Area
53.6 sq m / 577 sq ft



Fifth Floor

This plan is for layout guidance only. Not drawn to scale unless stated. Windows and door openings are approximate. Whilst every care is taken in the preparation of this plan, please check all dimensions, shapes and compass bearings before making any decisions reliant upon them. (ID627121)



Agents Note: Whilst every care has been taken to prepare these particulars, they are for guidance purposes only. All measurements are approximate and are for general guidance purposes only and whilst every care has been taken to ensure their accuracy, they should not be relied upon and potential buyers/tenants are advised to recheck the measurements

Energy Efficiency Rating		Current	Potential
Very energy efficient - lower running costs			
(92 plus) A			
(81-91) B		83	83
(69-80) C			
(55-68) D			
(39-54) E			
(21-38) F			
(1-20) G			
Not energy efficient - higher running costs			
England & Wales		EU Directive 2002/91/EC	

GARETH JAMES

OFFICE ADDRESS
129 Bellenden Road
London
SE15 4QY

OFFICE DETAILS
02077324330
lettings@garethjames.com
<https://www.garethjames.com/>