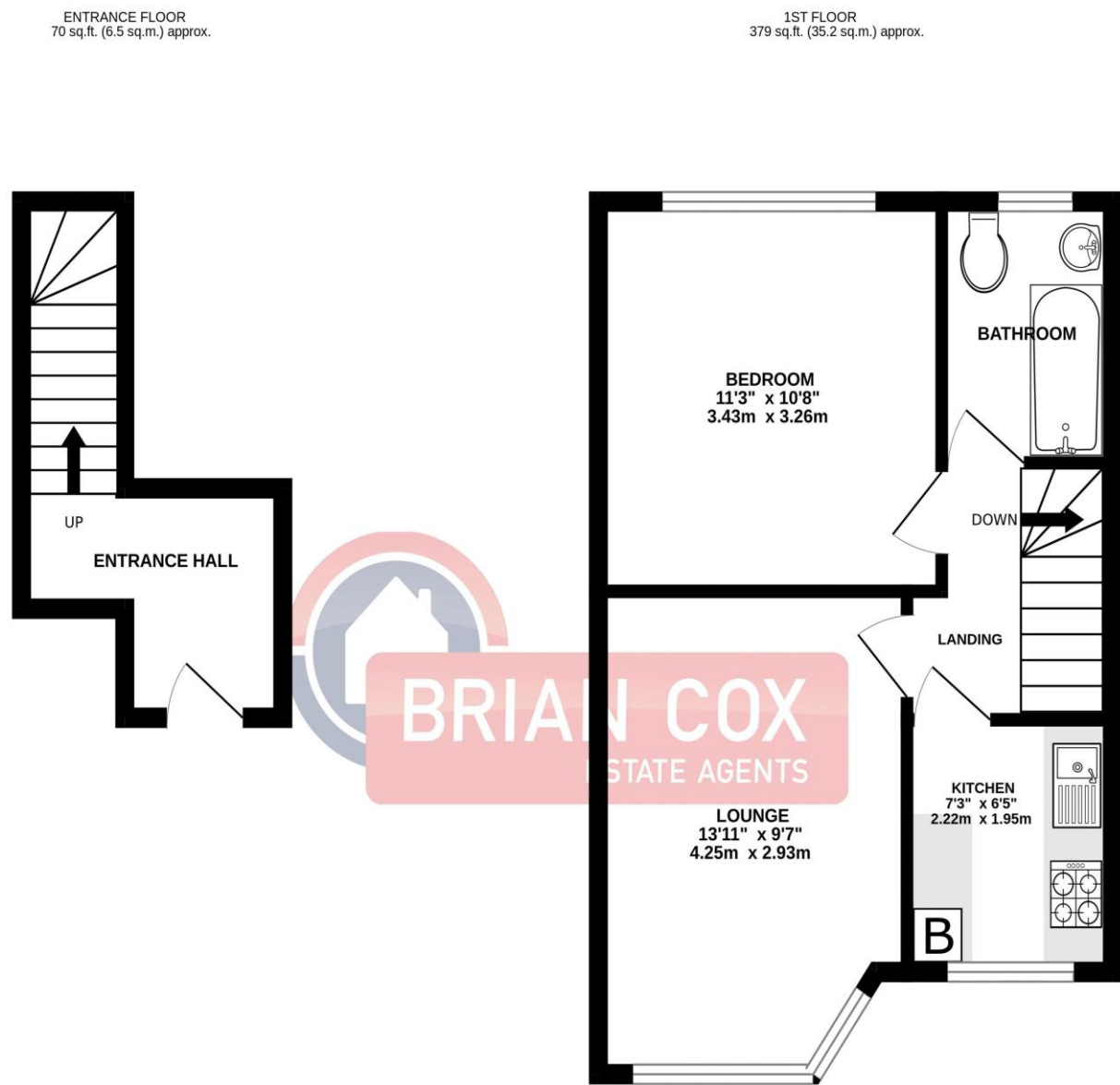


the floorplan...



TOTAL FLOOR AREA : 449 sq.ft. (41.7 sq.m.) approx.

Whilst every attempt has been made to ensure the accuracy of the floorplan contained here, measurements of doors, windows, rooms and any other items are approximate and no responsibility is taken for any error, omission or mis-statement. This plan is for illustrative purposes only and should be used as such by any prospective purchaser. The services, systems and appliances shown have not been tested and no guarantee as to their operability or efficiency can be given.

Made with Metropix ©2025

more details from...

call: **Brian Cox Greenford: 0203 866 6640**
email: **emma.gerald@brian-cox.co.uk**
web: **www.brian-cox.co.uk**



0203 866 6640
brian-cox.co.uk



ONE BEDROOM - FISRT FLOOR MAISONETTE -
SHARE OF FREEHOLD - 900+ YEAR LEASE -
PARKING - CHAIN FREE! Brian Cox and Company
are delighted to bring to the market this one
bedroom share of freehold first floor
maisonette. The property comprises a spacious
double bedroom, a bright and comfortable
reception room, a well-equipped kitchen, and a
family bathroom. Further benefits include,
double glazing, gas central heating, parking and
is being offered chain free. Viewings are highly
recommended to fully appreciate all on offer,
so call now to arrange yours!!



£290,000
Share of Freehold

Roxeth Green Avenue, Harrow HA2 8AE

Consumer Protection from Unfair Trading Regulations 2008 We have not tested any apparatus, equipment, fixtures, fittings or services and so cannot verify that they are in working order or fit for purpose. You are advised to obtain verification from your solicitor or surveyor. References to the tenure of a property are based on information supplied by the seller. We have not had sight of the title documents and a buyer is advised to obtain verification from their solicitor. Items shown in photographs are not included unless specifically mentioned within the sales particulars, but may be available by separate negotiation. We advise you to book an appointment to view before embarking on any journey to see a property, and check its availability.



in brief...

- One Bedroom
- First Floor
- Share of Freehold
- Chain Free
- Approx 962 Year Lease
- Parking



the location...

nearest stations ...

South Harrow (0.4 miles)
West Harrow (0.7 miles)
Rayners Lane (0.8 miles)

South Harrow is south-west of Harrow-on-the-Hill in the London Borough of Harrow and its development originally spread south and west from the hamlet of Roxeth as a result of urbanization and easier access from Central London by rail.

Its areas include, in the west, the geometric garden estate of Shaftesbury Circus/Avenue and in the south, beyond this historic heart, a newly developed shopping area, South and the locality's own high street, Northolt Road.