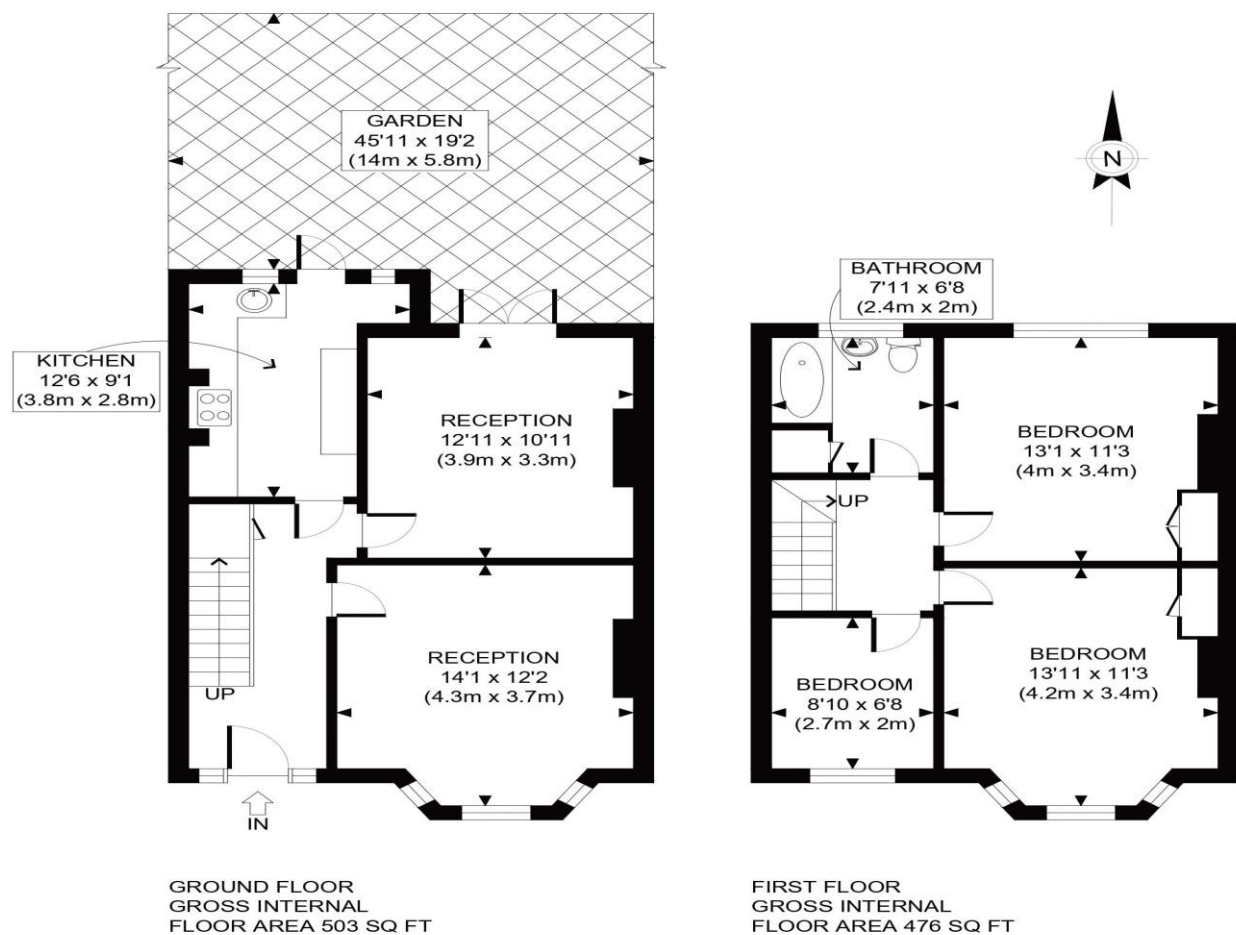


# The Floorplan...



## More Details From...

**Call:** Brian Cox North Harrow: 020 3866 6640  
**Email:** [Azi.Rahman@brian-cox.co.uk](mailto:Azi.Rahman@brian-cox.co.uk)  
**Web:** [www.brian-cox.co.uk](http://www.brian-cox.co.uk)



0203 866 6640  
[brian-cox.co.uk](http://brian-cox.co.uk)



Brian Cox Estate Agents are pleased to present this generously sized three-bedroom terraced home, now available on the market. Ideally situated within close reach of local shops, the Metropolitan line station, and falling within the highly regarded Vaughan School catchment area, this property is nestled in the popular and sought-after 'County Roads' location—renowned for its spacious homes. The accommodation comprises a welcoming entrance hallway, a bright and airy lounge, a separate dining room, and a well-proportioned kitchen. Upstairs, you will find three generously sized bedrooms and a family bathroom. Additional features include gas central heating and a charming rear garden.



Guide Price £599,950  
Freehold

Sussex Road, Harrow HA1 4LX

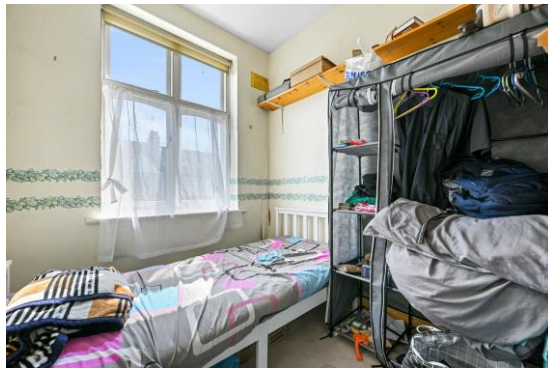
Consumer Protection from Unfair Trading Regulations 2008 We have not tested any apparatus, equipment, fixtures, fittings or services and so cannot verify that they are in working order or fit for purpose. You are advised to obtain verification from your solicitor or surveyor. References to the tenure of a property are based on information supplied by the seller. We have not had sight of the title documents and a buyer is advised to obtain verification from their solicitor. Items shown in photographs are not included unless specifically mentioned within the sales particulars, but may be available by separate negotiation. We advise you to book an appointment to view before embarking on any journey to see a property, and check its availability.





## In Brief...

- Three Bedroom Terraced House
- Chain Free Sale
- Potential To Extend (STPP)
- Walking Distance Away From West Harrow Tube Station & North Harrow Tube Station
- Good Condition Throughout
- EPC Rating D & Council Tax Band D



## The Location...

### Nearest Stations ...

West Harrow (0.4 miles)  
North Harrow (0.4 miles)  
Harrow-on-the-Hill (0.6 miles)

Harrow is a large suburban town in the London Borough of Harrow, North West London, England. It is centred 10.5 miles (16.9 km) North West of Charing Cross. Harrow has two large shopping centres which are St Anns and St Georges with its many large department stores, restaurants, cafes and cinema. There are many local schools in the area some of these include Vaughan Primary School, Norbury School, Longfield Primary School, Nower Hill High School and Whitmore High School.