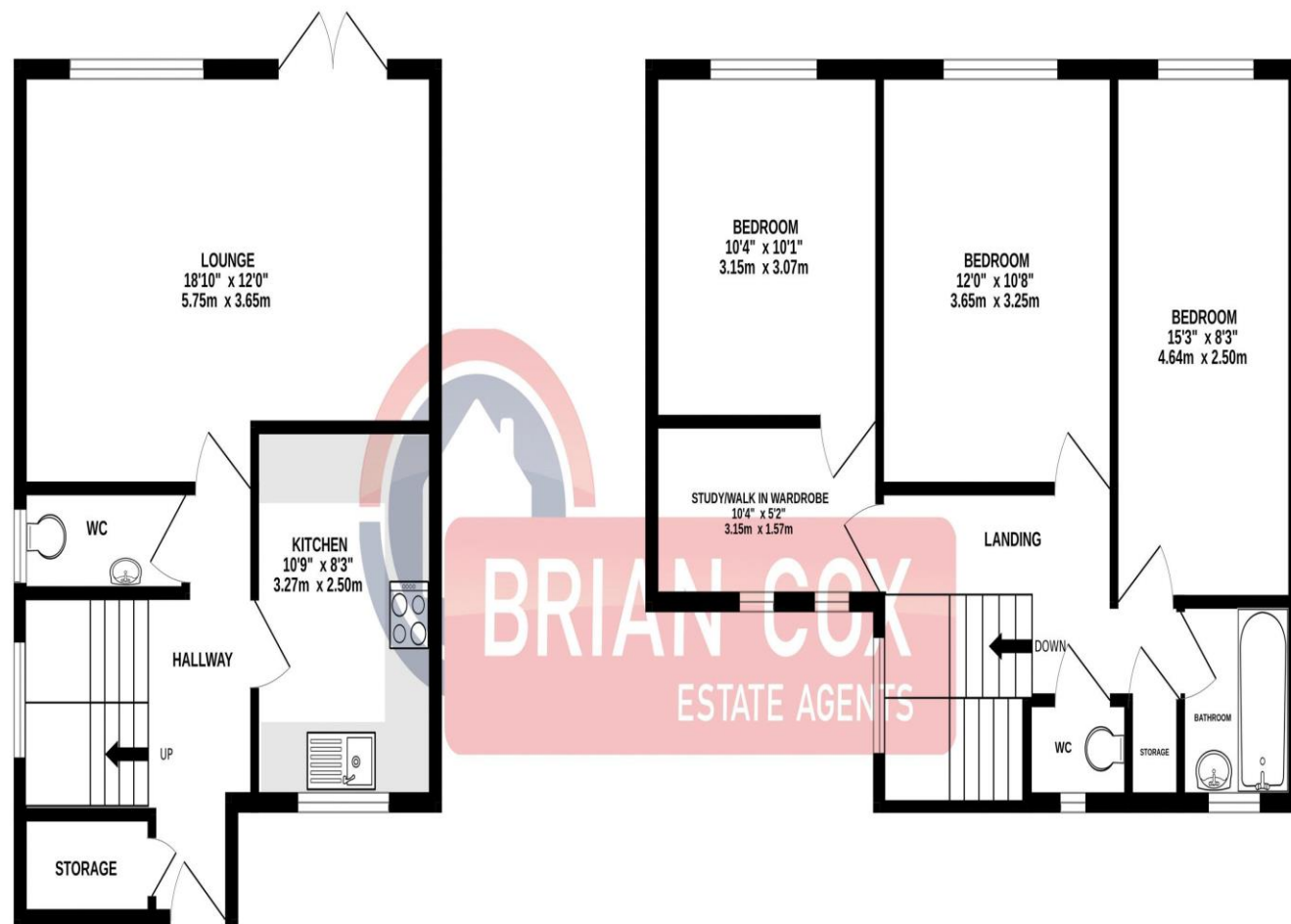


the floorplan...

GROUND FLOOR
428 sq.ft. (39.7 sq.m.) approx.

1ST FLOOR
553 sq.ft. (51.4 sq.m.) approx.



TOTAL FLOOR AREA : 980 sq.ft. (91.1 sq.m.) approx.

Whilst every attempt has been made to ensure the accuracy of the floorplan contained here, measurements of doors, windows, rooms and any other items are approximate and no responsibility is taken for any error, omission or mis-statement. This plan is for illustrative purposes only and should be used as such by any prospective purchaser. The services, systems and appliances shown have not been tested and no guarantee as to their operability or efficiency can be given.
Made with Metropix ©2025

more details from...

call: **Brian Cox North Harrow: 020 3866 6640**
email: **info@brian-cox.co.uk**
web: **www.brian-cox.co.uk**



Consumer Protection from Unfair Trading Regulations 2008 We have not tested any apparatus, equipment, fixtures, fittings or services and so cannot verify that they are in working order or fit for purpose. You are advised to obtain verification from your solicitor or surveyor. References to the tenure of a property are based on information supplied by the seller. We have not had sight of the title documents and a buyer is advised to obtain verification from their solicitor. Items shown in photographs are not included unless specifically mentioned within the sales particulars, but may be available by separate negotiation. We advise you to book an appointment to view before embarking on any journey to see a property, and check its availability.



020 3866 6640
brian-cox.co.uk



THREE DOUBLE BEDROOM - FREEHOLD HOUSE - REAR GARDEN. Brian Cox and Company are pleased to present to the market this three bedroom family home located in the ever popular Northwood. The property briefly comprises an entrance hall, downstairs w/c, fitted kitchen, a bright lounge with French doors opening directly to the garden, three double bedrooms, bathroom with separate w/c. Further benefits include double glazing, gas central heating and no onward chain. Viewings are available now so call to arrange yours!!



£565,000
Freehold

Myrtleside Close, Northwood
HA6 2GB



in brief...

- Three Double Bedroom
- Terraced Freehold House
- Downstairs W/C
- Study
- Private Rear Garden
- No Chain



the location...

nearest stations ...

Northwood (0.3 miles)

Northwood Hills (1.1 miles)

Moor Park (1.4 miles)

Northwood is an area in the London Borough of Hillingdon, West London, located 14+1/2 miles (23 kilometres) northwest of Charing Cross. Northwood was part of the ancient parish of Ruislip, Middlesex. The area was situated on the historic Middlesex boundary with Hertfordshire, and since being incorporated into Greater London in 1965, has been on the Greater London boundary with that county. It has also been within the Metropolitan Police District since 1840.

The area consists of the elevated settlement of Northwood and Northwood Hills, both of which are served by stations on the Metropolitan line of the London Underground.

There are a number of amenities within easy reach including Mount Vernal Hospital, Northwood Recreation Ground, Both Northwood and Haste Hill Golf Clubs as well as a wide range of shops and restaurants located in Northwood Town Centre.

For those with children there are several well thought of schools locally, these include Northwood College for Girls, St. Martin's School, St. Helen's School, Holy Trinity CoE Primary School and Frithwood Primary School to name a few.

020 3866 6640

brian-cox.co.uk