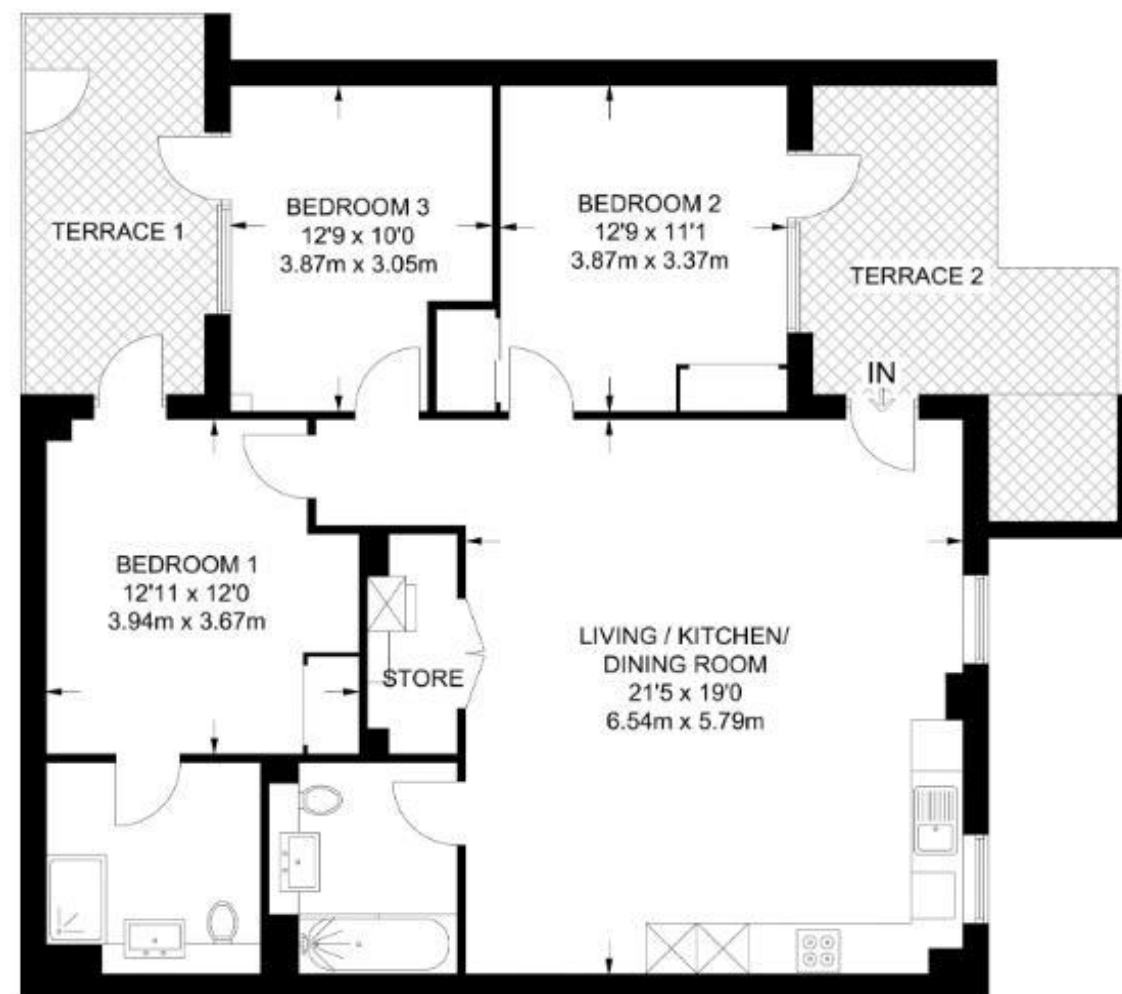


The Floorplan...



APPROXIMATE GROSS INTERNAL AREA
1038.9 SQ FT / 96.6 SQ M

This plan has been drawn for illustrative and identification purposes only.

More Details From...

Call: Brian Cox North Harrow: 020 3866 6640

Email: Azi.Rahman@brian-cox.co.uk

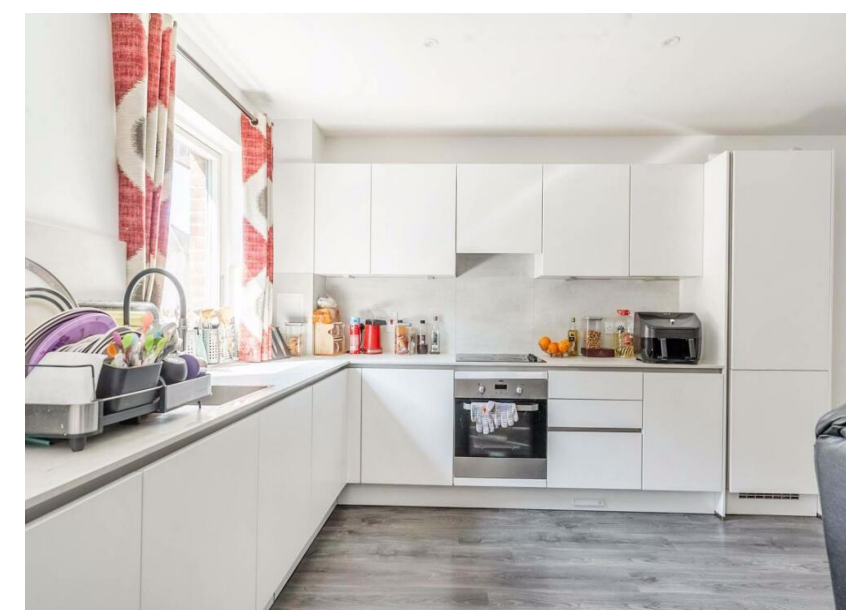
Web: www.brian-cox.co.uk



0203 866 6640
brian-cox.co.uk



Brian Cox & Company are delighted to offer this stunning three bedroom ground floor flat to the market! This flat is set within a modern new development and benefits from generous sized rooms, private patio, en-suite facilities and an excellent location. Lensview Close is situated within the popular Eastman Village. The property is moments from a multitude of transport links including rail connections from Harrow & Wealdstone station and bus links alongside Headstone Drive.



Guide Price £575,000

Leasehold

Harrow View, Harrow HA1 4GN

Consumer Protection from Unfair Trading Regulations 2008 We have not tested any apparatus, equipment, fixtures, fittings or services and so cannot verify that they are in working order or fit for purpose. You are advised to obtain verification from your solicitor or surveyor. References to the tenure of a property are based on information supplied by the seller. We have not had sight of the title documents and a buyer is advised to obtain verification from their solicitor. Items shown in photographs are not included unless specifically mentioned within the sales particulars, but may be available by separate negotiation. We advise you to book an appointment to view before embarking on any journey to see a property, and check its availability.



In Brief...

- Ground Floor Apartment
- Allocated Parking Space
- Larger Than Average
- Residents Gym
- Mutii-Zone Underfloor Heating
- EPC Rating B & Council Tax Band E



The Location...

Nearest Stations ...

Harrow & Wealdstone Station 0.5 miles
 Headstone Lane Station 0.8 miles
 North Harrow Station 0.9 miles

Harrow is a suburban area of North West London, situated north-west of central Harrow within the London Borough of Harrow. North Harrow train station is a London Underground station situated in North Harrow in North West London. The station is on the Metropolitan line between Harrow-on-the-Hill (southbound) and Pinner (northbound). You also have the Harrow Town Centre which is not too far from the property. The town centre is served well by local amenities including a shopping centre, post office, Tesco Express, a selection of restaurants, take-aways and independent specialist shops. There are also several schools in the area and churches.