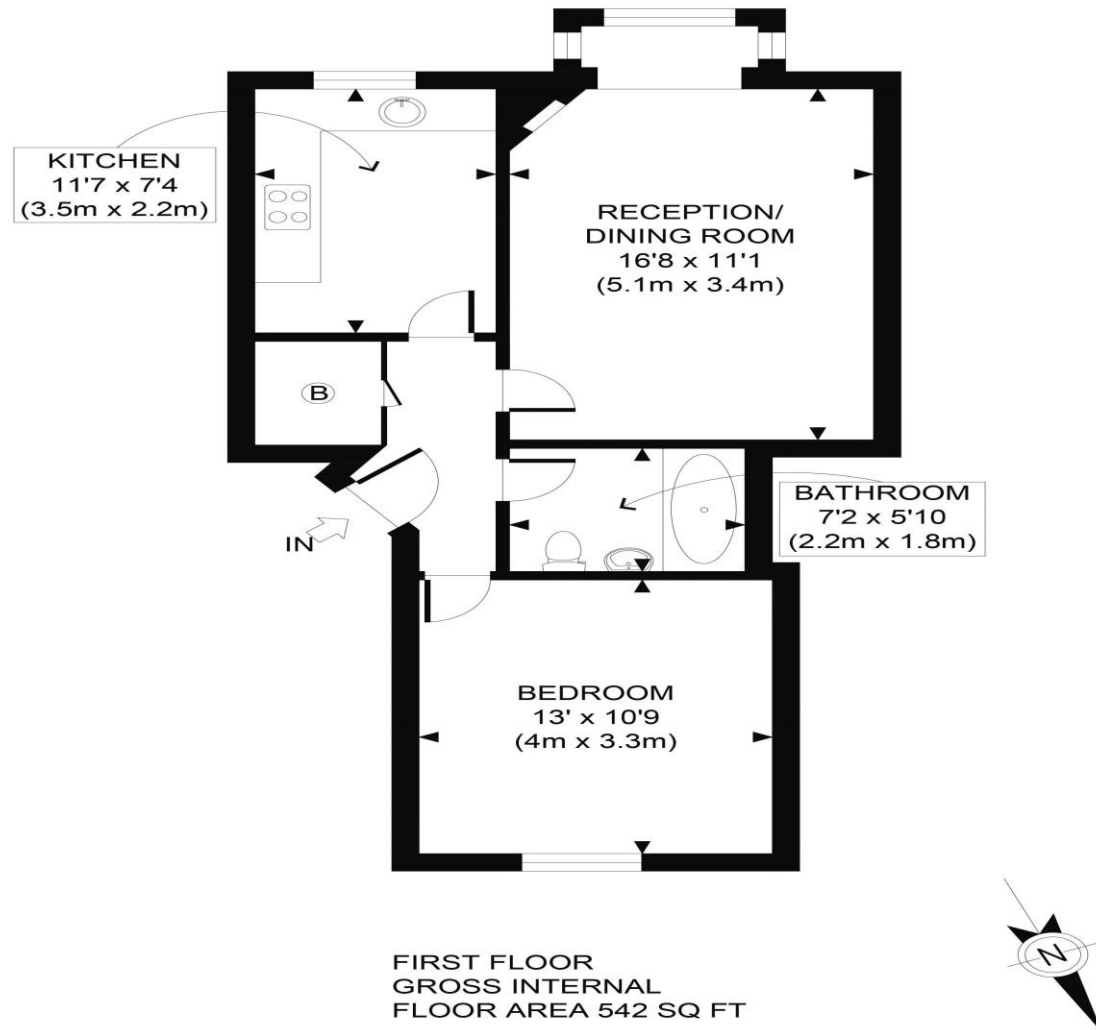


The Floorplan...



APPROX. GROSS INTERNAL FLOOR AREA 542 SQ FT / 50 SQM	Laura Court
Disclaimer: Floor plan measurements are approximate and are for illustrative purposes only. While we do not doubt the floor plan accuracy and completeness, you or your advisors should conduct a careful, independent investigation of the property in respect of monetary valuation	date 04/10/24
	photoplan

More Details From...

Call: Brian Cox North Harrow: 020 3866 6640
Email: Azi.Rahman@brian-cox.co.uk
Web: www.brian-cox.co.uk



0203 866 6640
 brian-cox.co.uk



Brian Cox are pleased to be able to offer for sale this one bedroom first floor purpose built flat to the market! This property is in a select development within moments of facilities in the surrounding area including Headstone Lane station with it's connections into Central London and Watford. The property is offered for sale in very good order and benefits from gas central heating, double glazed windows, security entry phone system, allocated parking and well maintained communal grounds. The property would make an ideal First Time or Investment purchase, and as such, an internal inspection comes highly advised



Offers in Excess of
 £300,000

Parkfield Avenue, Harrow HA2 6NR

Consumer Protection from Unfair Trading Regulations 2008 We have not tested any apparatus, equipment, fixtures, fittings or services and so cannot verify that they are in working order or fit for purpose. You are advised to obtain verification from your solicitor or surveyor. References to the tenure of a property are based on information supplied by the seller. We have not had sight of the title documents and a buyer is advised to obtain verification from their solicitor. Items shown in photographs are not included unless specifically mentioned within the sales particulars, but may be available by separate negotiation. We advise you to book an appointment to view before embarking on any journey to see a property, and check its availability.



In Brief...

- One Bedroom Purpose Built Flat
- Catchment Area On Pinner Park Primary School & Nower Hill Secondary School
- Communal Gardens
- Larger Than Average
- Allocated Parking
- EPC Rating C & Council Tax Band C



The Location...

Nearest Stations ...

Headstone (0.1 miles)
North Harrow (0.5 miles)
West Harrow (0.8 miles)

North Harrow is a suburban area of North West London, situated north-west of central Harrow within the London Borough of Harrow. North Harrow train station is a London Underground station situated in North Harrow in North West London. The station is on the Metropolitan line between Harrow-on-the-Hill (southbound) and Pinner (northbound). The area is served well by local amenities including a post office, Tesco Express, a selection of restaurants, take-aways & cafés and independent specialist shops. There are several schools in the area and churches.