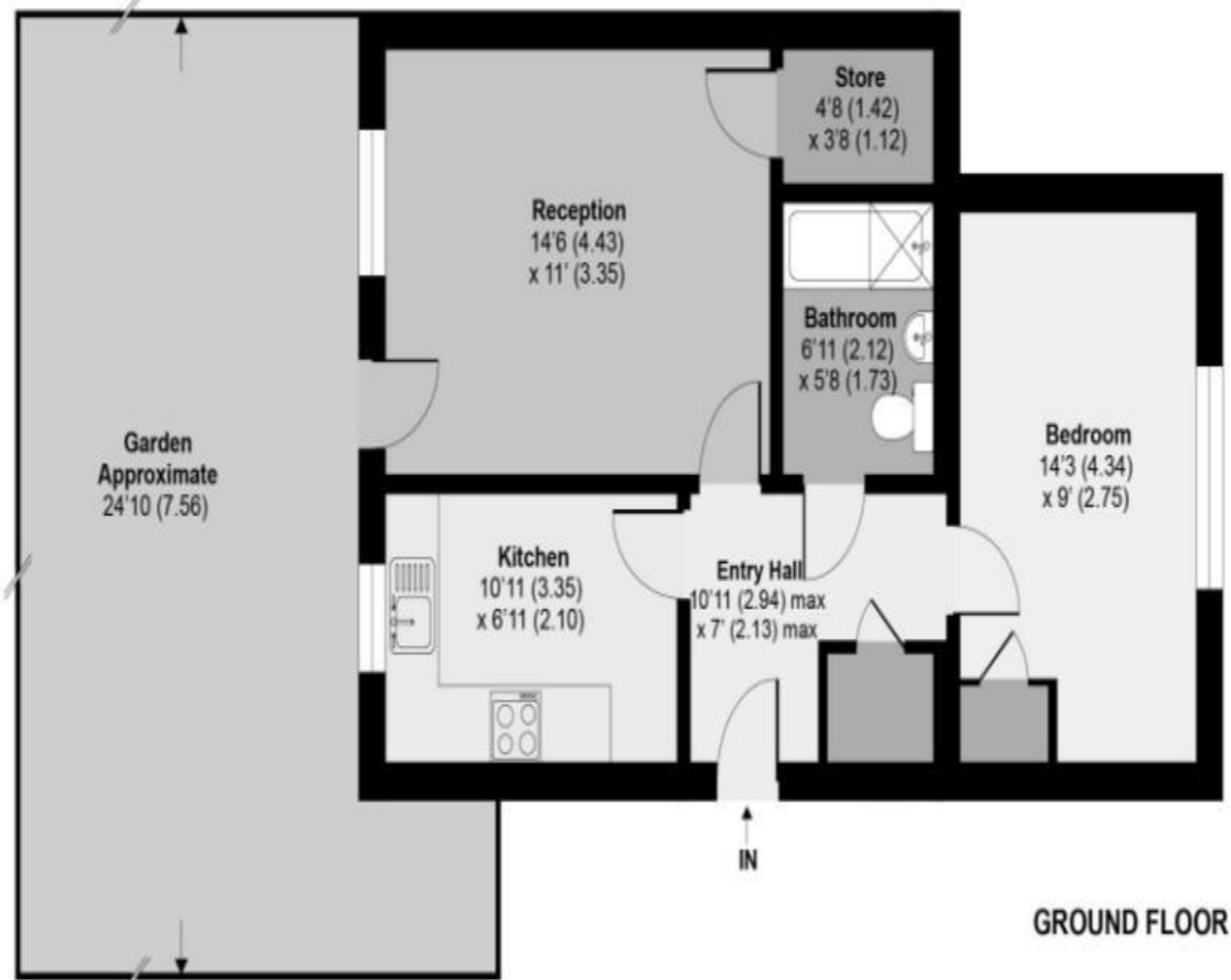


The Floorplan...



Yewtree Close, Harrow, HA2 6HX

Approximate Internal Area = 526 sq ft / 48.8 sq m
Approximate External Area = 628 sq ft / 58.3 sq m

More Details From...

Call: **Brian Cox North Harrow: 020 3866 6640**

Email: Azi.rahman@brian-cox.co.uk

Web: www.brian-cox.co.uk



0203 866 6640
brian-cox.co.uk



Brian Cox Estate Agents are delighted to offer this spacious, one bedroom ground floor purpose built maisonette in excellent condition throughout. The property is situated close to shopping facilities, sought after schools, North Harrow Metropolitan line station and other transport links. The accommodation briefly comprises: Entrance hallway, living room, fitted kitchen, double bedroom and bathroom. Further benefits include the property comes with a large private garden, gas central heating, double glazing and on-street parking! This property is perfect for Buy To Let Investors and First Time Buyers so call us now to arrange a viewing to avoid disappointment!



Guide Price £310,000

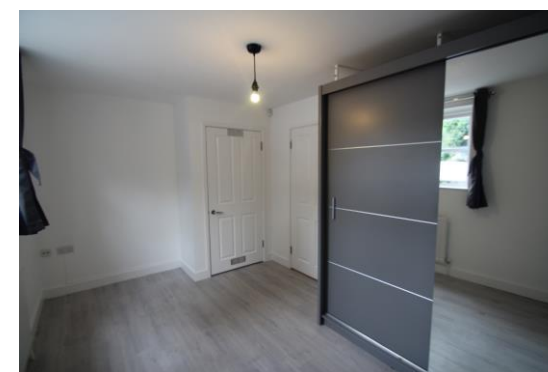
Yewtree Close, Harrow HA2 6HX

Consumer Protection from Unfair Trading Regulations 2008 We have not tested any apparatus, equipment, fixtures, fittings or services and so cannot verify that they are in working order or fit for purpose. You are advised to obtain verification from your solicitor or surveyor. References to the tenure of a property are based on information supplied by the seller. We have not had sight of the title documents and a buyer is advised to obtain verification from their solicitor. Items shown in photographs are not included unless specifically mentioned within the sales particulars, but may be available by separate negotiation. We advise you to book an appointment to view before embarking on any journey to see a property, and check its availability.



In brief...

- One Bedroom Purpose Built Maisonette
- Chain Free
- Private Garden and Private Entrance
- Excellent Condition
- Walking Distance to North Harrow, West Harrow and Harrow on the Hill Station
- Council Tax Band C & EPC Rating C



the location...

Nearest Stations ...

North Harrow (0.2 miles)
West Harrow (0.7 miles)
Headstone Lane (0.9 miles)

North Harrow is a suburban area of North West London, situated north-west of central Harrow within the London Borough of Harrow. North Harrow train station is a London Underground station situated in North Harrow in North West London. The station is on the Metropolitan line between Harrow-on-the-Hill (southbound) and Pinner (northbound). The area is served well by local amenities including a post office, Tesco Express, The Gym, Costa Coffee, a selection of restaurants, take-aways and independent specialist shops. There are several outstanding rated schools in the area.