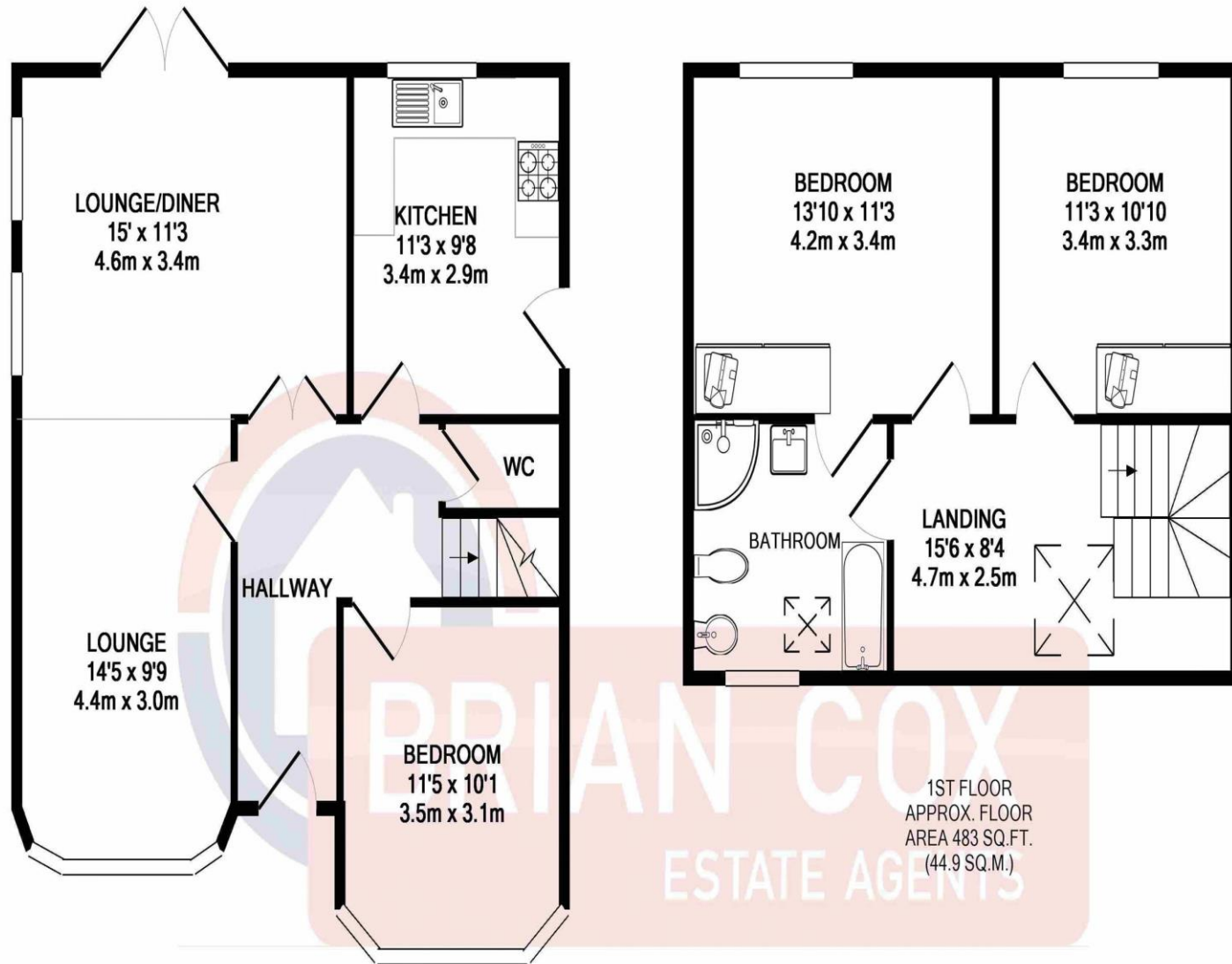


# the floorplan...



GROUND FLOOR  
APPROX. FLOOR  
AREA 648 SQ.FT.  
(60.2 SQ.M.)

TOTAL APPROX. FLOOR AREA 1131 SQ.FT. (105.0 SQ.M.)

Whilst every attempt has been made to ensure the accuracy of the floor plan contained here, measurements of doors, windows, rooms and any other items are approximate and no responsibility is taken for any error, omission, or mis-statement. This plan is for illustrative purposes only and should be used as such by any prospective purchaser. The services, systems and appliances shown have not been tested and no guarantee as to their operability or efficiency can be given  
Made with Metropix ©2017

## more details from...

call: **Brian Cox North Harrow: 020 3866 6640**  
email: [paul.budd@brian-cox.co.uk](mailto:paul.budd@brian-cox.co.uk)  
web: [www.brian-cox.co.uk](http://www.brian-cox.co.uk)



0203 866 6640  
[brian-cox.co.uk](http://brian-cox.co.uk)



**! Available Now !** Brian Cox Estate Agents are proud to present to the market is unique and beautifully presented Chalet Style Bungalow. Situated on a quite tree lined cul-de-sac close to West Harrow Transport links and amenities. The property consists of three double bedrooms, Through lounge with diner, modern fitted kitchen, modern fitted bathroom and downstairs WC. Other benefits include off street parking and huge private rear garden.



Monthly Rental Of £2,300

Fernbrook Drive, North Harrow HA2 7ED





## in brief...

- Available Now
- Huge Rear Garden
- Fully Fitted Kitchen
- Detached Chalet Bungalow
- EPC Rating: D
- Council Tax Band: E



## the location...

### nearest stations ...

North Harrow (0.5 miles) Rayners Lane (0.4 miles) West Harrow (0.6 miles) North Harrow is a suburban area of North West London, situated North-West of Central Harrow within the London Borough of Harrow. North Harrow Train Station is a London Underground Station situated in North Harrow in North West London. The station is on the Metropolitan Line between Harrow-on-the-Hill (southbound) and Pinner (northbound). The area is served well by local amenities including a post office, Tesco Express, a selection of restaurants, take-aways & cafés and independent specialist shops. There are several schools and churches in the area. There are many local schools in the area with a good or higher Ofsted report some of these include Vaughan Primary School, Norbury School, Marlborough Primary School and Longfield Primary School.



020 3866 6640

[brian-cox.co.uk](http://brian-cox.co.uk)