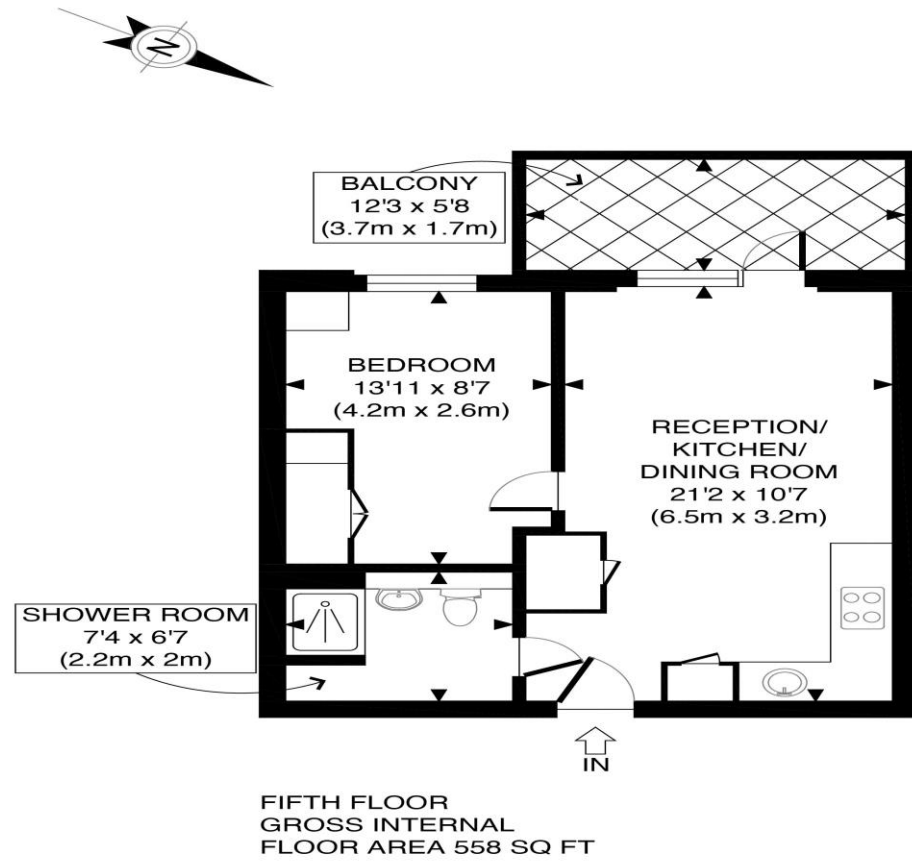


The Floorplan...



APPROX. GROSS INTERNAL FLOOR AREA 558 SQ FT / 52 SQM

Disclaimer: Floor plan measurements are approximate and are for illustrative purposes only. While we do not doubt the floor plan accuracy and completeness, you or your advisors should conduct a careful, independent investigation of the property in respect of monetary valuation

Taro Apt

date 30/05/24

photoplan

More Details From...

Call: **Brian Cox North Harrow: 020 3866 6640**

Email: Azi.rahman@brian-cox.co.uk

Web: www.brian-cox.co.uk



0203 866 6640
brian-cox.co.uk



Brian Cox Estate Agents are delighted to offer this stunning one bedroom apartment to the market! This beautifully presented flat features an open plan kitchen and living area which leads out onto a generous South facing balcony. The large panel windows and balcony floods the property with natural light throughout the day. The large double bedroom and family bathroom both offer great space and smart storage solutions. Further benefits from living on this development include an on-site gym, cafe, Nursery, GP, restaurant and supermarket meaning convenience is at your doorstep.



Offers in Excess of
£330,000

Flat 54, Taro Apartments , HA1 4GF

Consumer Protection from Unfair Trading Regulations 2008 We have not tested any apparatus, equipment, fixtures, fittings or services and so cannot verify that they are in working order or fit for purpose. You are advised to obtain verification from your solicitor or surveyor. References to the tenure of a property are based on information supplied by the seller. We have not had sight of the title documents and a buyer is advised to obtain verification from their solicitor. Items shown in photographs are not included unless specifically mentioned within the sales particulars, but may be available by separate negotiation. We advise you to book an appointment to view before embarking on any journey to see a property, and check its availability.



In Brief...

- One Bedroom
- New Build
- Large South Facing Balcony
- Stunning Finish
- Integrated Appliances
- Ample Storage Solutions
- Council Tax Band C & EPC Rating B
- Leasehold 990+ Years Remaining



The Location...

Nearest Stations

Headstone Lane Station 0.4 miles
 Harrow & Wealdstone Station 0.8 miles
 North Harrow Station 1.0 miles

Harrow is a suburban area of North West London, situated north-west of central Harrow within the London Borough of Harrow. North Harrow train station is a London Underground station situated in North Harrow in North West London. The station is on the Metropolitan line between Harrow-on-the-Hill (southbound) and Pinner (northbound). You also have the Harrow Town Centre which is not too far from the property. The town centre is served well by local amenities including a shopping centre, post office, Tesco Express, a selection of restaurants, take-aways and independent specialist shops. There are also several schools in the area and churches.