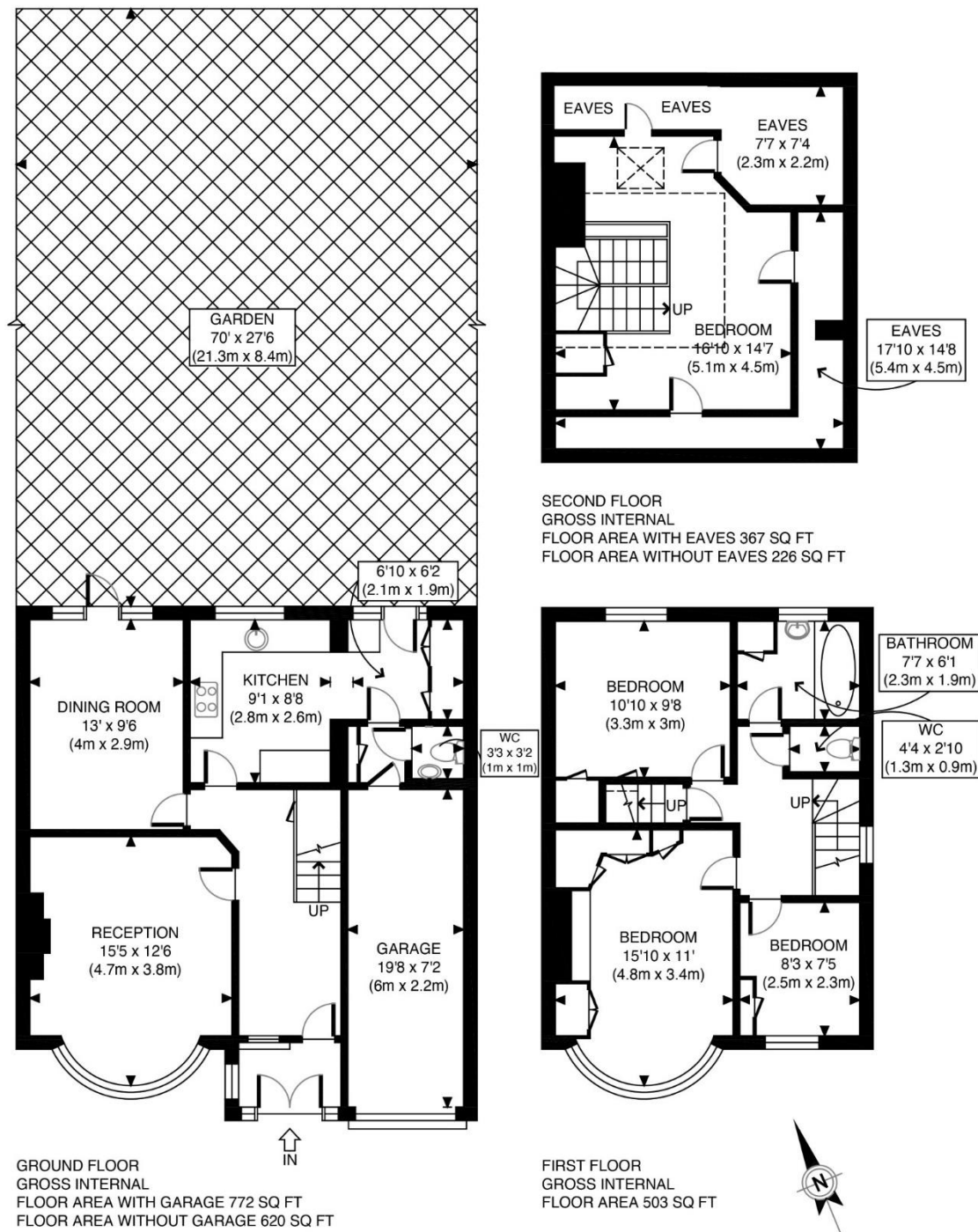


The Floorplan...



APPROX. GROSS INTERNAL FLOOR AREA WITH EAVES/GARAGE 1642 SQ FT / 153 SQM
 APPROX. GROSS INTERNAL FLOOR AREA WITHOUT EAVES/GARAGE 1349 SQ FT / 125 SQM
 Disclaimer: Floor plan measurements are approximate and are for illustrative purposes only.
 While we do not doubt the floor plan accuracy and completeness, you or your advisors should
 conduct a careful, independent investigation of the property in respect of monetary valuation

Chester Drive
date: 15/05/24
photoplan

More Details From...

Call: Brian Cox North Harrow: 020 3866 6640
Email: Azi.Rahman@brian-cox.co.uk
Web: www.brian-cox.co.uk



0203 866 6640
 brian-cox.co.uk



Brian Cox Estate Agents are delighted to offer this **FOUR BEDROOM SEMI DETACHED HOUSE** to the market! The property is situated on a lovely, quiet residential road. It is flooded with abundant natural light and boasts very good room sizes. This family home features a beautiful landscaped garden. Additionally, it is conveniently located near great shopping facilities, sought-after schools, and North Harrow Tube Station, which is on the Metropolitan line. The accommodation comprises an entrance hallway, spacious lounge, dining room, fitted kitchen, four good-sized bedrooms, and a large family bathroom. Further benefits include a garage to the side, its own driveway, a front garden, and ample scope for future extension (subject to planning permission).



Guide Price £775,000

Freehold

Chester Drive, Harrow HA2 7PU



In Brief...

- Larger Than Average Four Bedroom Semi Detached House
- Off Street Parking
- Garage To The Side
- Further Potential To Extend (STPP)
- Attractive Landscaped Garden
- Chain Free Sale



The Location...

Nearest Stations ...

- North Harrow (0.3 miles)
- West Harrow (0.7 miles)
- Rayners Lane (0.6 miles)

North Harrow is a suburban area of North West London, situated North West of central Harrow within the London Borough of Harrow. North Harrow Train Station is a London Underground Station situated in North Harrow in North West London. The station is on the Metropolitan Line between Harrow-on-the-Hill (southbound) and Pinner (northbound). The area is served well by local amenities including a post office, Tesco Express, a selection of restaurants, take-aways & cafes and independent specialist shops. There are also many local schools in the area some include Longfield Primary School, St John Fisher Catholic Primary School, Vaughan Primary School and Grange Primary School which all have a good of higher Ofsted report.