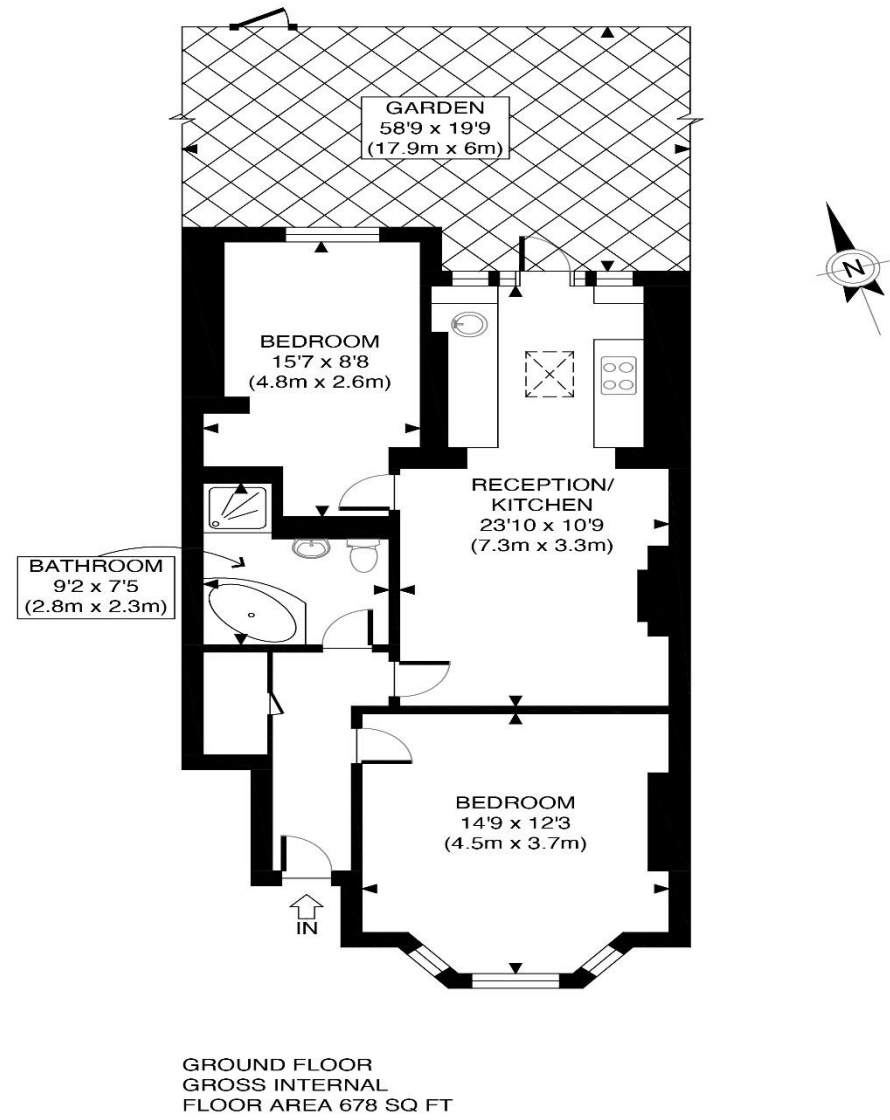


The Floorplan...



APPROX. GROSS INTERNAL FLOOR AREA 678 SQ FT / 63 SQM	Pinner Road
Disclaimer: Floor plan measurements are approximate and are for illustrative purposes only. While we do not doubt the floor plan accuracy and completeness, you or your advisors should conduct a careful, independent investigation of the property in respect of monetary valuation	date 20/03/24
	photoplan

More Details From...

Call: Brian Cox North Harrow: 020 3866 6640
Email: Azi.Rahman@brian-cox.co.uk
Web: www.brian-cox.co.uk



Consumer Protection from Unfair Trading Regulations 2008 We have not tested any apparatus, equipment, fixtures, fittings or services and so cannot verify that they are in working order or fit for purpose. You are advised to obtain verification from your solicitor or surveyor. References to the tenure of a property are based on information supplied by the seller. We have not had sight of the title documents and a buyer is advised to obtain verification from their solicitor. Items shown in photographs are not included unless specifically mentioned within the sales particulars, but may be available by separate negotiation. We advise you to book an appointment to view before embarking on any journey to see a property, and check its availability.



0203 866 6640
 brian-cox.co.uk



Brian Cox Estate Agents are delighted to offer this this stunning two double bedroom ground floor maisonette to the market! The property is located between North & West Harrow stations which take you to Baker Street within 25 minutes. Throughout the property you have abundance of living space which is filled with natural light. Benefits include a share of freehold, large private rear garden. This will sell quickly so call now to avoid disappointment.



Guide Price £425,000

Share of Freehold

Pinner Road, Harrow HA1 4JU



In Brief...

- Two Double Bedrooms
- Original Period Features
- Ground Floor
- Beautiful Rear Garden
- Finished to High Standard
- Walking Distance to North & West Harrow Stations
- EPC Rating C & Council Tax Band C



The Location...

Nearest Stations ...

West Harrow (0.2 miles)
 North Harrow (0.4 miles)
 Harrow-on-the-Hill (0.8 miles)



Harrow is a large suburban town in the London Borough of Harrow, North West London, England. It is centred 10.5 miles (16.9 km) North West of Charing Cross. Harrow has two large shopping centres which are St Anns and St Georges with its many large department stores, restaurants, cafes and cinema. You have a large Tescos & Morrison's which are both within a short drive to the property. There are many local schools in the area some of these include Vaughan Primary School, Norbury School, Longfield Primary School, Whitmore High School and Nower Hill High School.

