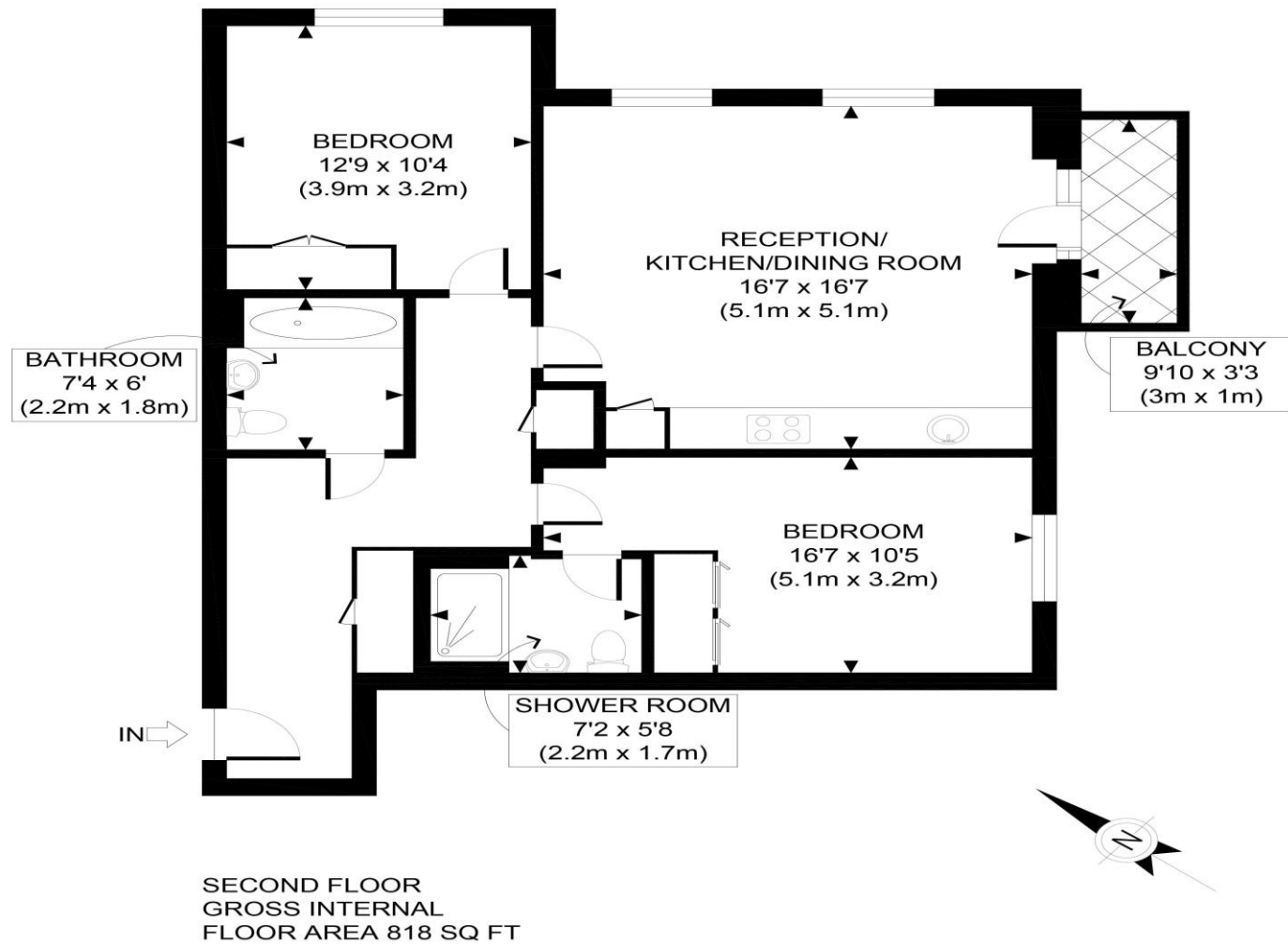


# The Floorplan...



APPROX. GROSS INTERNAL FLOOR AREA 818 SQ FT / 76 SQM

Disclaimer: Floor plan measurements are approximate and are for illustrative purposes only. While we do not doubt the floor plan accuracy and completeness, you or your advisors should conduct a careful, independent investigation of the property in respect of monetary valuation

Harrow View

date 24/11/23

photoplan

## More Details From...

Call: [Brian Cox North Harrow: 020 3866 6640](tel:02038666640)

Email: [Azi.Rahman@brian-cox.co.uk](mailto:Azi.Rahman@brian-cox.co.uk)

Web: [www.brian-cox.co.uk](http://www.brian-cox.co.uk)



Consumer Protection from Unfair Trading Regulations 2008 We have not tested any apparatus, equipment, fixtures, fittings or services and so cannot verify that they are in working order or fit for purpose. You are advised to obtain verification from your solicitor or surveyor. References to the tenure of a property are based on information supplied by the seller. We have not had sight of the title documents and a buyer is advised to obtain verification from their solicitor. Items shown in photographs are not included unless specifically mentioned within the sales particulars, but may be available by separate negotiation. We advise you to book an appointment to view before embarking on any journey to see a property, and check its availability.



0203 866 6640  
[brian-cox.co.uk](http://brian-cox.co.uk)



Brian Cox Estate Agents are delighted to offer this stunning and spacious TWO BEDROOM & TWO BATHROOM APARTMENT to the market which is an impressive 818 square feet. This stylish second floor apartment comes with an ALLOCATED PARKING SPACE for one car, lovely high ceilings, a very modern spec, and private balcony. There are two large bedrooms, the master bedroom boasts a spacious En-suite shower room and the whole property basks in natural light.



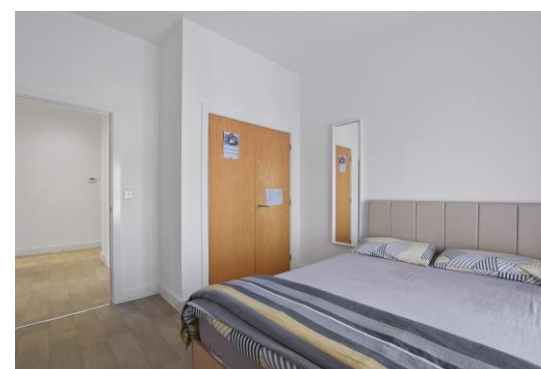
Guide Price £450,000

Harrow View, Harrow HA2 6QQ



## In Brief...

- Two Bedroom Apartment
- Master Bedroom with En-suite
- Allocated Parking Space
- Private Balcony
- Modern Finish with Integrated Appliances
- EPC Rating B & Council Tax band D
- Leasehold, Over 990+ Years



## The Location...

### Nearest Stations ...

Headstone Lane Station 0.4 miles  
 Harrow & Wealdstone Station 0.8 miles  
 North Harrow Station 1.0 miles



Harrow is a suburban area of North West London, situated north-west of central Harrow within the London Borough of Harrow. North Harrow train station is a London Underground station situated in North Harrow in North West London. The station is on the Metropolitan line between Harrow-on-the-Hill (southbound) and Pinner (northbound). You also have the Harrow Town Centre which is not too far from the property. The town centre is served well by local amenities including a shopping centre, post office, Tesco Express, a selection of restaurants, take-aways and independent specialist shops. There are also several schools in the area and churches.

