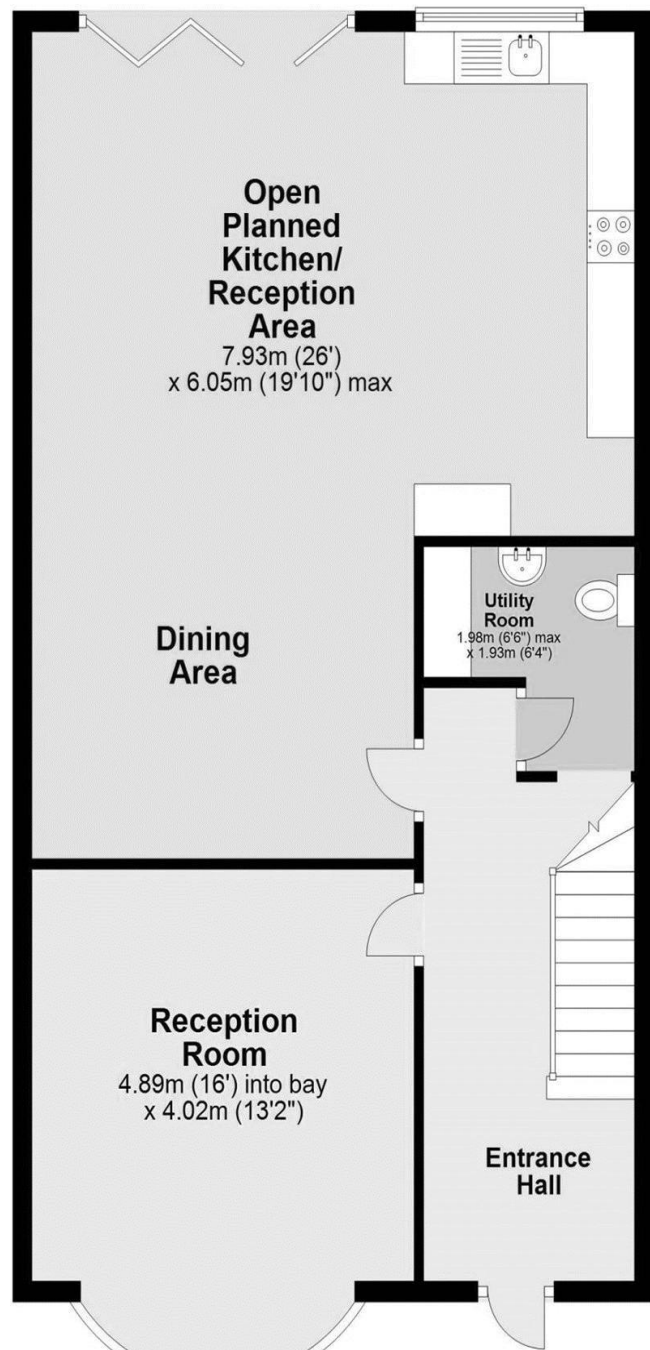
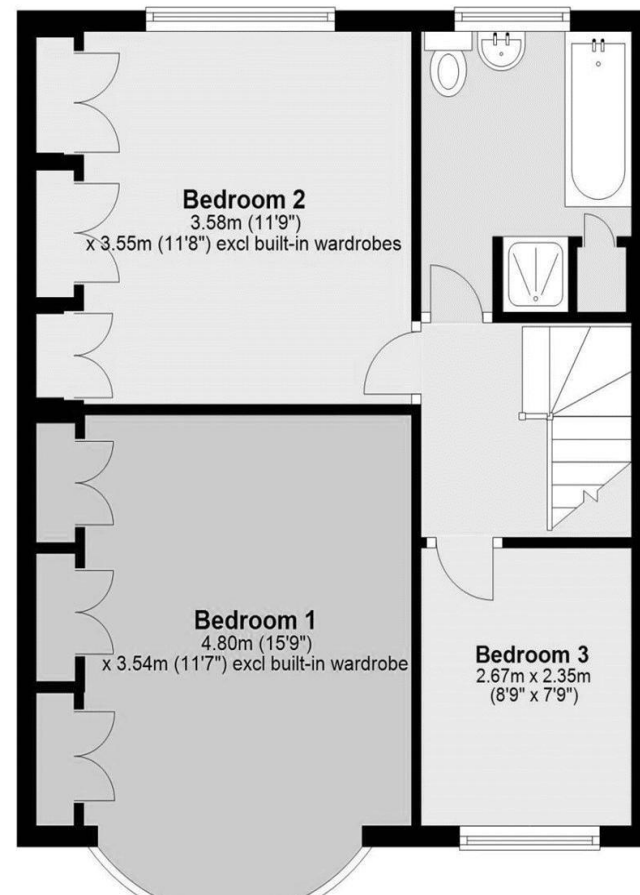


# The Floorplan...



**Ground Floor**  
Approx. 74.4 sq. metres (800.8 sq. feet)



**First Floor**  
Approx. 47.3 sq. metres (508.9 sq. feet)

Total area: approx. 121.7 sq. metres (1309.7 sq. feet)

## More Details From...

**Call:** Brian Cox North Harrow: 020 3866 6640

**Email:** Azi.Rahman@brian-cox.co.uk

**Web:** www.brian-cox.co.uk



0203 866 6640  
brian-cox.co.uk



Brian Cox Estate Agents are delighted to offer this lovely three bedroom extended semi-detached house to the market! This property is situated close to shopping facilities, Headstone lane mainline train station, sought after schools including Pinner Park & Nower Hill schools. Accommodation: Entrance hallway, lounge, stunning open plan fitted kitchen/sitting/dining room with bi-fold doors to the garden, utility room, landing, three good sized bedrooms and family bathroom. Further benefits include gas central heating, double glazing, own drive and a delightful 150ft garden.



Offers in Excess of  
£700,000

Parkfield Avenue, Harrow HA2 6NP



### In Brief...

- Stunning Three Bedroom Semi Detached House
- Pinner Park & Nower Hill School Catchment Area
- Walking Distance Away From Shops & Transport Links
- Amazing Extension
- Stunning Open Kitchen/Sitting/Dining Area
- Huge Rear Garden
- Further Potential To Extend
- EPC Rating D & Council Tax Band D



### The Location...

#### Nearest Stations ...

Headstone (0.2 miles)  
North Harrow (0.6 miles)  
West Harrow (0.9 miles)

Parkfield Avenue is a short distance from North Harrow with its choice of shops, eateries, bus routes and the Metropolitan Line, offering access into Central London. Within walking distance are several highly regarded schools including Pinner Park Infant and Junior School and Nower Hill High School.



020 3866 6640

[brian-cox.co.uk](http://brian-cox.co.uk)