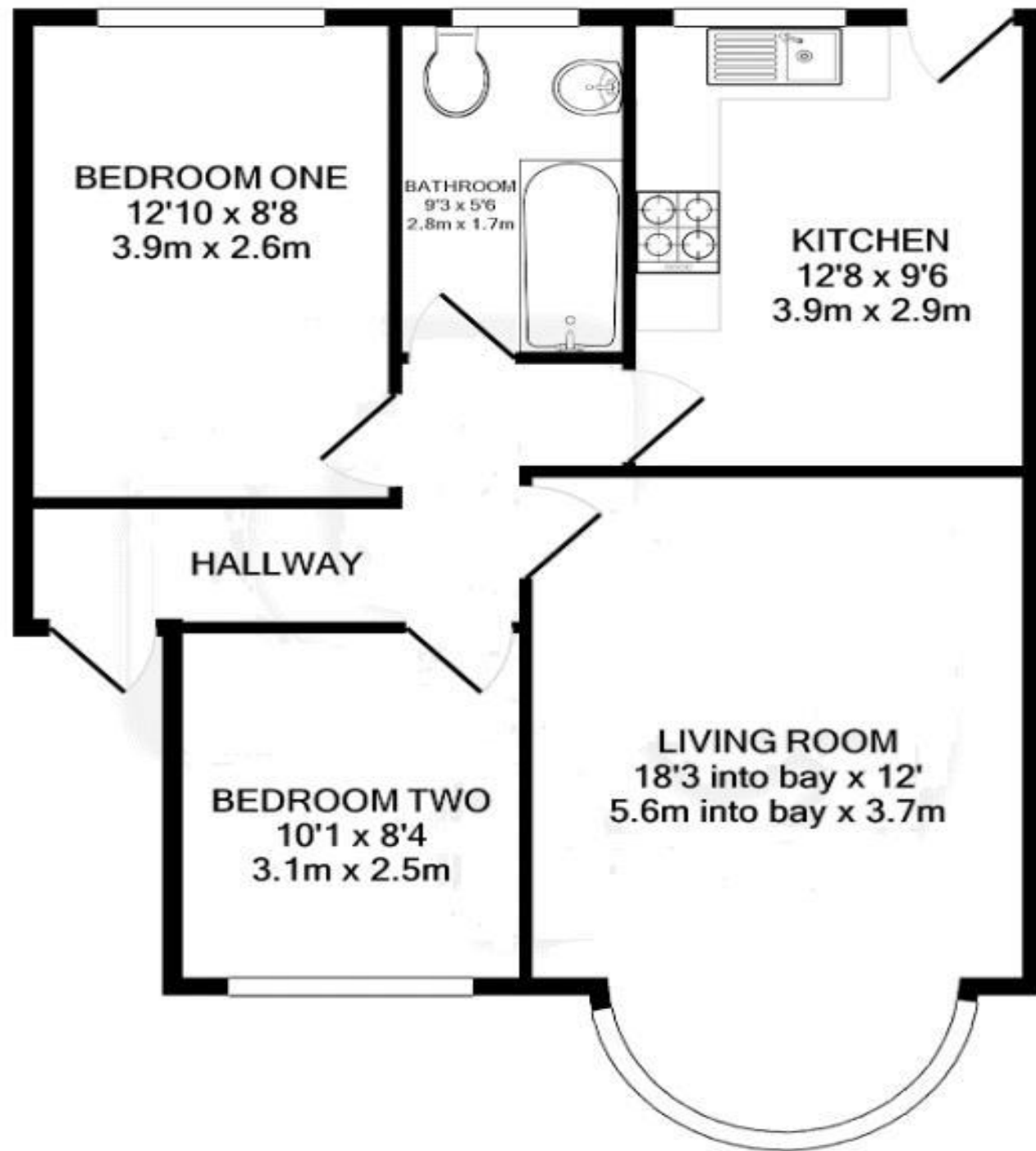


The Floorplan...



More Details From...

Call: **Brian Cox North Harrow: 020 3866 6640**

Email: Azi.Rahman@brian-cox.co.uk

Web: www.brian-cox.co.uk



0203 866 6640
brian-cox.co.uk



Brian Cox Estate Agents are delighted to offer this spacious and well maintained two double bedroom second floor purpose built flat conveniently located for shops, schools and transport links. The property briefly comprises communal entrance, hallway, bay fronted living room, modern fitted kitchen with access to rear of property via staircase, two double bedrooms and bathroom. Further benefits include double glazing, gas central heating and residents permit parking.



Guide Price £315,000

Alexandra Avenue, Harrow HA2 9DT

Consumer Protection from Unfair Trading Regulations 2008 We have not tested any apparatus, equipment, fixtures, fittings or services and so cannot verify that they are in working order or fit for purpose. You are advised to obtain verification from your solicitor or surveyor. References to the tenure of a property are based on information supplied by the seller. We have not had sight of the title documents and a buyer is advised to obtain verification from their solicitor. Items shown in photographs are not included unless specifically mentioned within the sales particulars, but may be available by separate negotiation. We advise you to book an appointment to view before embarking on any journey to see a property, and check its availability.



In Brief...

- Two Double Bedroom Flat
- 972 Years Remaining On The Lease
- Intercom System
- Chain Free
- Gas Central Heating
- Close to Local Amenities
- Residence Permit Parking
- Council Tax Band B & EPC Rating C



The Location...

Nearest Stations ...

Rayners Lane Station 0.4 miles
 South Harrow Station 0.9
 miles Northolt Park Station 1.0 miles



Minehead Court is located on Alexandra Avenue which is situated only moments from Rayners Lane train station and high street with its vast array of local shops, coffee houses and restaurants. For commuters the Metropolitan/Piccadilly Line provides a fast service into the heart of London and beyond. Also near by are Newton Farm School and Newton Park West.

