

the floorplan...



0203 866 6640  
brian-cox.co.uk



This charming two/three bedroom detached house enters the market with Brian Cox Estate Agents. The property is situated close to shopping facilities, Pinner Park School and Headstone lane train station. Accommodation: entrance hallway, lounge, dining room/third bedroom, fitted kitchen, two good sized bedroom and bathroom seperated from toilet. Further benefits include gas central heating, double glazing, garage, a rear garden and own drive.



more details from...

call: **Brian Cox North Harrow: 020 3866 6640**  
email: [paul.budd@brian-cox.co.uk](mailto:paul.budd@brian-cox.co.uk)  
web: [www.brian-cox.co.uk](http://www.brian-cox.co.uk)



Monthly Rental Of £2,200  
Freehold

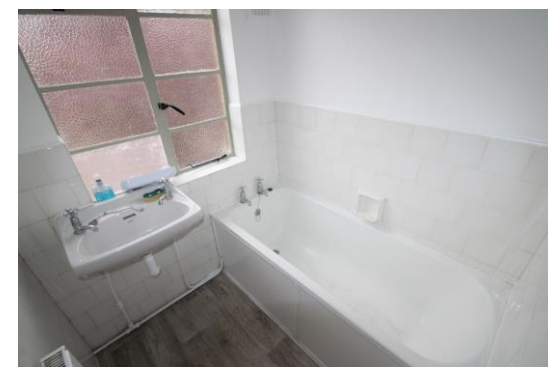
Fernleigh Court, Harrow HA2 6NA

Consumer Protection from Unfair Trading Regulations 2008 We have not tested any apparatus, equipment, fixtures, fittings or services and so cannot verify that they are in working order or fit for purpose. You are advised to obtain verification from your solicitor or surveyor. References to the tenure of a property are based on information supplied by the seller. We have not had sight of the title documents and a buyer is advised to obtain verification from their solicitor. Items shown in photographs are not included unless specifically mentioned within the sales particulars, but may be available by separate negotiation. We advise you to book an appointment to view before embarking on any journey to see a property, and check its availability.



## in brief...

- Great Transport Links
- Detached Property
- Pinner Park Catchment
- Available Immediately
- Garage and own Drive
- Rear Garden



## the location...

### nearest stations ...

Headstone (0.3 miles) North Harrow (0.5 miles) West Harrow (0.8 miles) North Harrow is a suburban area of North West London, situated north-west of central Harrow within the London Borough of Harrow. North Harrow train station is a London Underground station situated in North Harrow in North West London. The station is on the Metropolitan line between Harrow-on-the-Hill (southbound) and Pinner (northbound). The area is served well by local amenities including a post office, Tesco Express, a selection of restaurants, take-aways & cafés and independent specialist shops. There are several schools in the area and churches.