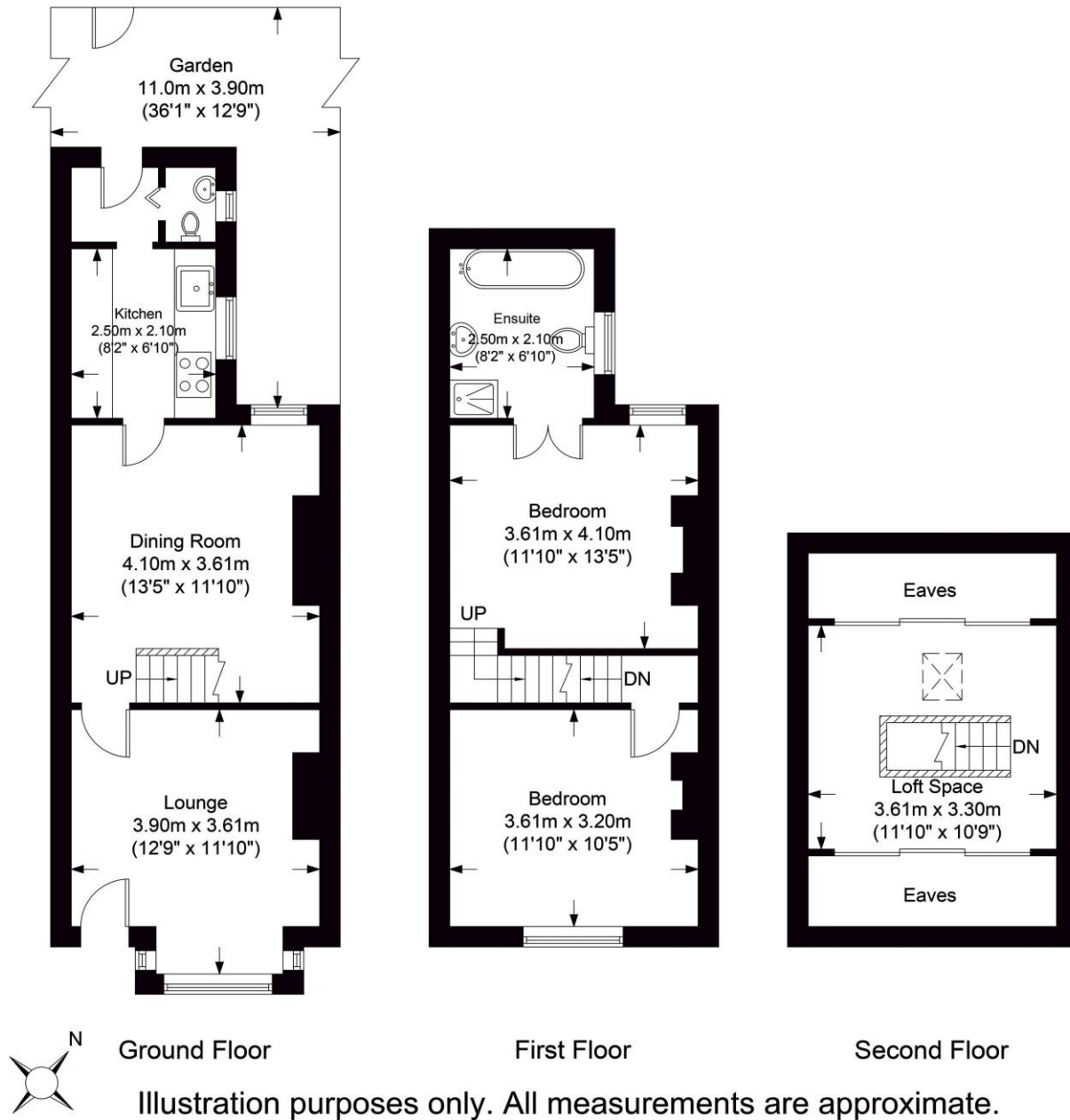


# the floorplan...

Approximate Gross Internal Floor Area : 88.05 sq m / 947.76 sq ft



## more details from...

call: **Brian Cox North Harrow: 020 3866 6640**  
email: [paul.budd@brian-cox.co.uk](mailto:paul.budd@brian-cox.co.uk)  
web: [www.brian-cox.co.uk](http://www.brian-cox.co.uk)



Consumer Protection from Unfair Trading Regulations 2008 We have not tested any apparatus, equipment, fixtures, fittings or services and so cannot verify that they are in working order or fit for purpose. You are advised to obtain verification from your solicitor or surveyor. References to the tenure of a property are based on information supplied by the seller. We have not had sight of the title documents and a buyer is advised to obtain verification from their solicitor. Items shown in photographs are not included unless specifically mentioned within the sales particulars, but may be available by separate negotiation. We advise you to book an appointment to view before embarking on any journey to see a property, and check its availability.



0203 866 6640  
[brian-cox.co.uk](http://brian-cox.co.uk)



This two bedroom terraced house enters the market with Brian Cox Estate Agents. The property is situated a short walk from Watford Metropolitan Line Train Station and is also just a 20 minute walk to Watford Junction Station. The accommodation comprises entrance hall, cloakroom, spacious lounge, dining room, Fitted Kitchen, two good sized bedrooms, loft room, attractive bathroom and low maintenance garden. The property is also available with no upper chain, call now to avoid disappointment.



£365,000  
Freehold

Oxford Street, Watford WD18 0ES



## in brief...

- Two Bedrooms
- Character Terraced House
- Sought After Location
- Close to Amenities
- Loft Room
- No Upper Chain



## the location...

### nearest stations ...

- Watford High Street (0.5 miles)
- Watford Station (0.5 miles)
- Bushey (0.8 miles)

Watford is a town and borough in Hertfordshire, England, situated 15 miles (24 km) North West of Central London and inside the circumference of the M25 motorway. Watford Town Centre has many local amenities some of these include a vast array of shops, restaurants and bars, a large shopping centre (Intu) and Cassiobury Park. There are many local schools nearby with a good or higher Ofsted report some of these include Chater Junior School, Laurance Haines School, St Anthony's Catholic Primary School, Watford Grammar School for Boys and Westfield Academy.