



**Price**  
**£875 PCM**

**John Street Ryde PO33**

Fees Apply



Available 03/05/25

**Pittis**  
Helping you move forwards

# Main Features

- Garden
- Two Beds
- No Deposit Option
- Available Now
- Long Let
- Central Location



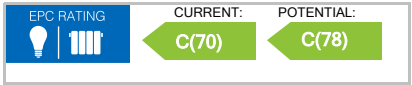
Deposit required is £1,009.62  
Isle of Wight - Council Tax Band Tax Band A

# Accommodation

- Kitchen 1.5m x 2.3m
- Lounge/Diner 3.8m x 5.1m
- Hallway
- Utility Cupboard 1.01m x 3m
- Bedroom One 2.7m x 4.3m
- Bathroom 1.7m x 1.78m
- Bedroom Two 2.06m x 5m
- Courtyard
- Garden

Renting a property is a big commitment and we recommend that you visit the local authority website and these websites which offer helpful information and advice about letting

- [www.gov.uk/government/publications/how-to-rent](http://www.gov.uk/government/publications/how-to-rent)
- [www.pittis.co.uk/renting/tenancy-fees-individuals/](http://www.pittis.co.uk/renting/tenancy-fees-individuals/)
- [www.gov.uk/private-renting](http://www.gov.uk/private-renting)
- [www.gov.uk/green-deal-energy-saving-measures](http://www.gov.uk/green-deal-energy-saving-measures)



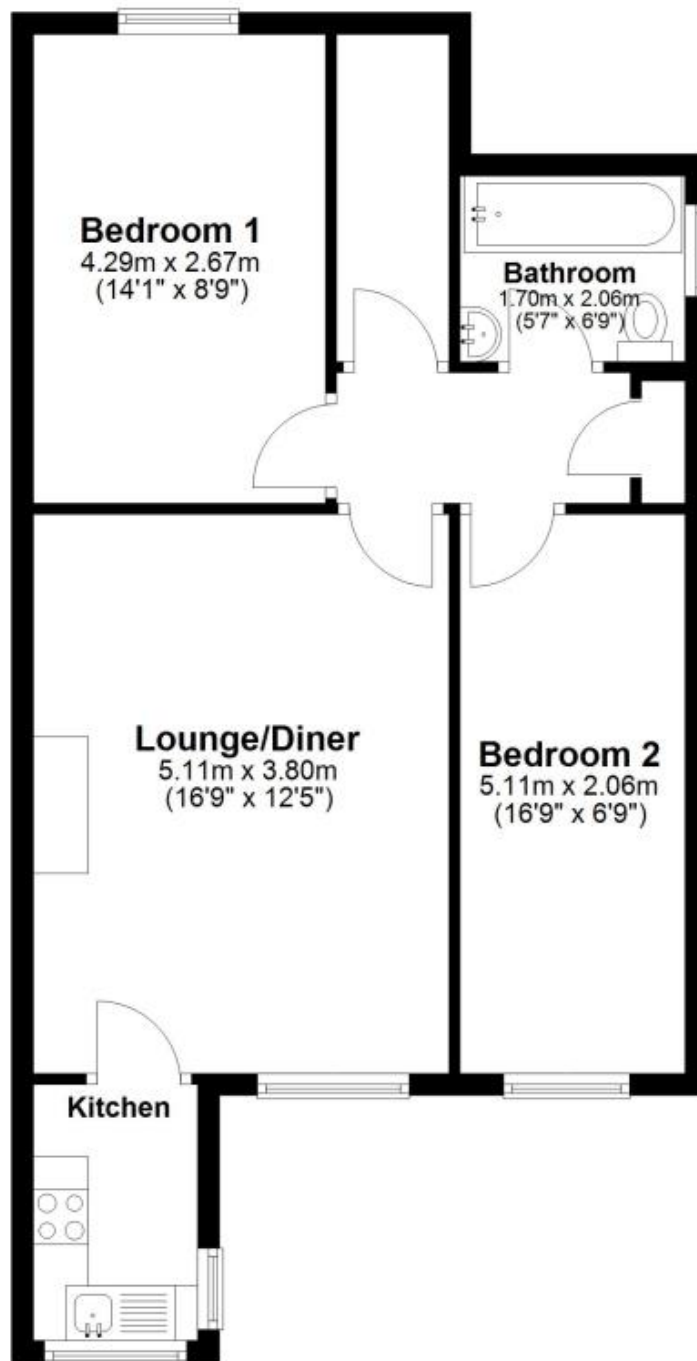
Call Ryde 01983 563785 ■ [pittis.co.uk](http://pittis.co.uk)

IMPORTANT INFORMATION: Please contact our Lettings Team who will confirm the total costs involved in renting this property. For clarification, we wish to inform the prospective tenant that we have prepared these details as a general guide. The agent has not carried out a detailed survey nor tested the services, appliances, or specific fittings (unless otherwise stated), and no warranty can be given as to their condition. All room measurements are taken at floor level. We strongly recommend that all the information which we provide about the property is verified by yourself and your advisers. The contents of this publication are © Pittis, 2015. Pittis is a trading name of Arun Estates Limited Registered in England No. 2597969



## Ground Floor

Approx. 57.4 sq. metres (617.5 sq. feet)



Total area: approx. 57.4 sq. metres (617.5 sq. feet)