



Price

£900 PCM

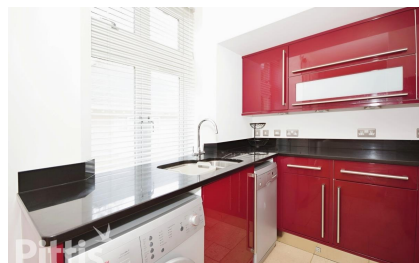
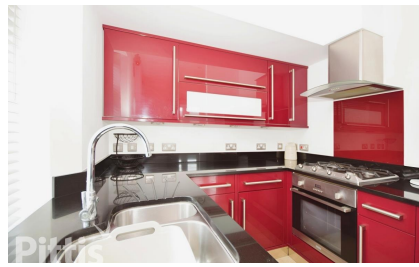
Fees Apply



Available 02/10/24

Manor Road Shanklin
PO37

Pittis
Helping you move forwards



Main Features

- One Bedroom
- Fully Furnished
- Character Building
- Communal Gardens
- Parking
- October Move

Accommodation

Communal Entrance Hall

Flat Hallway

Living Area 4.7m x 4.45m

Kitchen 2.2m x 2.24m

Bathroom 1.9m x 2.9m

Bedroom 4.6m x 3.3m

Parking Space

Communal Gardens



Deposit required is £1,038.46
Isle of Wight - Council Tax Band Tax Band B

Renting a property is a big commitment and we recommend that you visit the local authority website and these websites which offer helpful information and advice about letting

www.gov.uk/government/publications/how-to-rent

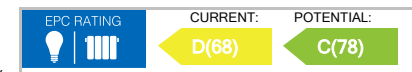
www.gov.uk/private-renting

www.pittis.co.uk/renting/tenancy-fees-individuals/

www.gov.uk/green-deal-energy-saving-measures

Call Ryde 01983 563785 ■ pittis.co.uk

IMPORTANT INFORMATION: Please contact our Lettings Team who will confirm the total costs involved in renting this property. For clarification, we wish to inform the prospective tenant that we have prepared these details as a general guide. The agent has not carried out a detailed survey nor tested the services, appliances, or specific fittings (unless otherwise stated), and no warranty can be given as to their condition. All room measurements are taken at floor level. We strongly recommend that all the information which we provide about the property is verified by yourself and your advisers. The contents of this publication are © Pittis, 2015. Pittis is a trading name of Arun Estates Limited Registered in England No. 2597969



First Floor

Approx. 42.2 sq. metres (454.5 sq. feet)

