



**Price**

**£950 PCM**

Fees Apply



Available 28/09/24

**Fort Street Sandown  
PO36**

**Pittis**  
Helping you move forwards



## Main Features

- Three Floors
- Garden
- En Suite
- Close To Beach
- Nil Deposit
- September Move



Deposit required is £1,096.15  
Isle of Wight - Council Tax Band C

Renting a property is a big commitment and we recommend that you visit the local authority website and these websites which offer helpful information and advice about letting

[www.gov.uk/government/publications/how-to-rent](http://www.gov.uk/government/publications/how-to-rent)

[www.gov.uk/private-renting](http://www.gov.uk/private-renting)

[www.pittis.co.uk/renting/tenancy-fees-individuals/](http://www.pittis.co.uk/renting/tenancy-fees-individuals/)

[www.gov.uk/green-deal-energy-saving-measures](http://www.gov.uk/green-deal-energy-saving-measures)

Call Ryde 01983 563785 ■ [pittis.co.uk](http://pittis.co.uk)

IMPORTANT INFORMATION: Please contact our Lettings Team who will confirm the total costs involved in renting this property. For clarification, we wish to inform the prospective tenant that we have prepared these details as a general guide. The agent has not carried out a detailed survey nor tested the services, appliances, or specific fittings (unless otherwise stated), and no warranty can be given as to their condition. All room measurements are taken at floor level. We strongly recommend that all the information which we provide about the property is verified by yourself and your advisers. The contents of this publication are © Pittis, 2015. Pittis is a trading name of Arun Estates Limited Registered in England No. 2597969

## Accommodation

### Hallway

**Cloakroom** 1.97m x 0.87m

**Lounge** 3.51m x 3m

**Dining Room** 3.46m x 2.24m

### Landing

**Bedroom One** 3.63m x 3m

**Bedroom Two** 3.08m x 2.31m

**Bathroom** 2.01m x 1.35m

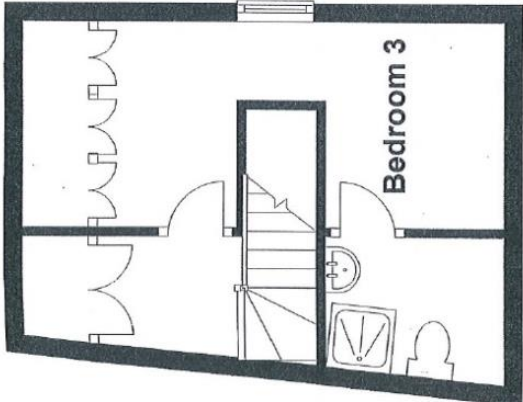
**Bedroom Three With Ensuite** 2.19m x 1.93m

**Garden**



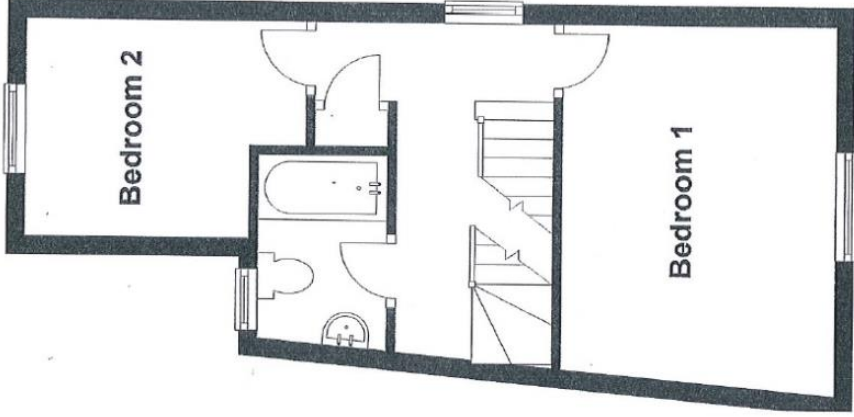
### Second Floor

Approx. 19.4 sq. metres (208.6 sq. feet)



### First Floor

Approx. 29.5 sq. metres (317.7 sq. feet)



### Ground Floor

Approx. 33.9 sq. metres (364.4 sq. feet)

