



## 4 Prestwick Place, Kilmarnock

In Excess of £260,000

DONALD  
**ROSS**  
RESIDENTIAL





## 4 Prestwick Place

Kilmarnock,

Beautifully presented 4 bedroom detached villa in the sought after Fardalehill development. Stylish interiors, landscaped south-facing garden, en-suite master, garage, and excellent transport links.

Council Tax band: F

Tenure: Freehold

- Bright and spacious lounge with stylish media wall
- Open plan dining kitchen with French doors to garden
- Separate utility room & convenient downstairs WC
- Master bedroom with en-suite shower room
- Three further well proportioned bedrooms
- Family bathroom with modern fittings
- Large monoblock driveway with integrated garage
- Professionally landscaped south-facing garden





















































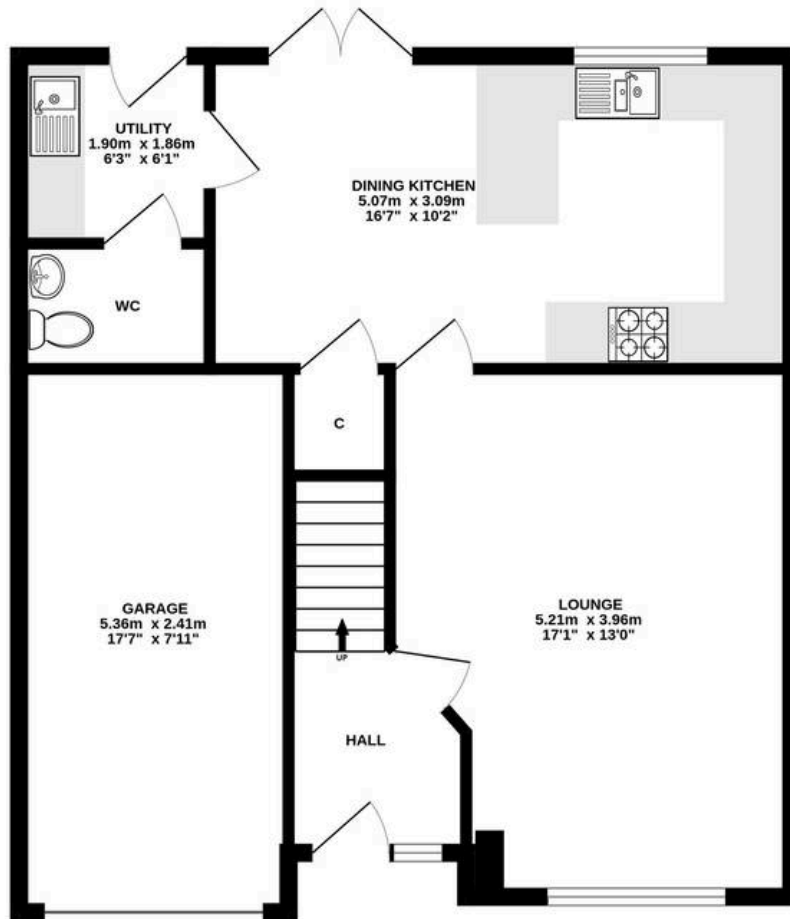




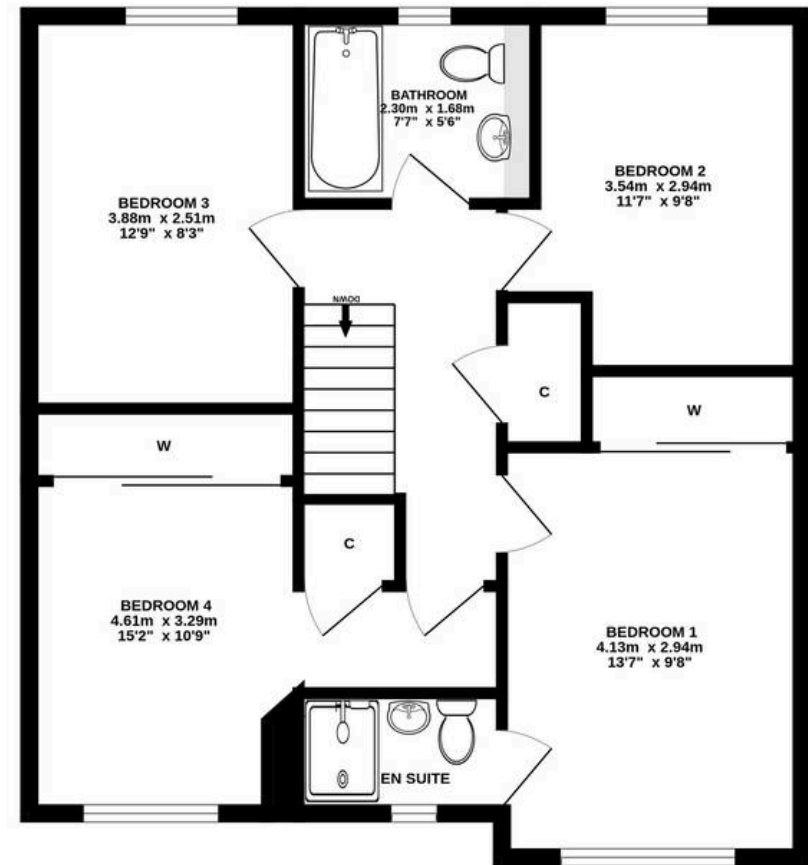




## GROUND FLOOR



## 1ST FLOOR



ALL MEASUREMENTS TAKEN AT WIDEST POINT.

Whilst every attempt has been made to ensure the accuracy of the floorplan contained here, measurements of doors, windows, rooms and any other items are approximate and no responsibility is taken for any error, omission or mis-statement. This plan is for illustrative purposes only and should be used as such by any prospective purchaser. The services, systems and appliances shown have not been tested and no guarantee as to their operability or efficiency can be given.  
Made with Metropix ©2025





## Donald Ross Residential Kilmarnock

Donald Ross Residential, 104-106 John Finnie Street – KA1 1BB

01563 550088 • [kilmarnock@donaldross.co.uk](mailto:kilmarnock@donaldross.co.uk) • [www.donaldross.co.uk](http://www.donaldross.co.uk)

While every effort has been made to ensure accuracy, buyers should independently verify all details and review the Home Report before submitting an offer. No warranty or representation is given regarding the property, and neither the agent nor the seller accepts responsibility for any inaccuracies. Buyers must satisfy themselves on all legal aspects.