



3 Fulton's Crescent, Fenwick KA3 6GJ

In Excess of **£225,000**

DONALD
ROSS
RESIDENTIAL



3 Fulton's Crescent

Fenwick, Kilmarnock KA3 6GJ

Council Tax band: TBD

Tenure: Freehold

EPC Energy Efficiency Rating: B

EPC Environmental Impact Rating:

- Three Large Double Bedrooms (Master with En Suite)
- Multi-Car Driveway
- Highly Desirable Residential Area
- Master Bedroom with En Suite
- Spacious Lounge
- Great Access to Local Amenities & Transport Links to Glasgow
- Downstairs WC
- Professionally Landscaped South Facing Rear Garden
- Modern Open Plan Dining Kitchen

























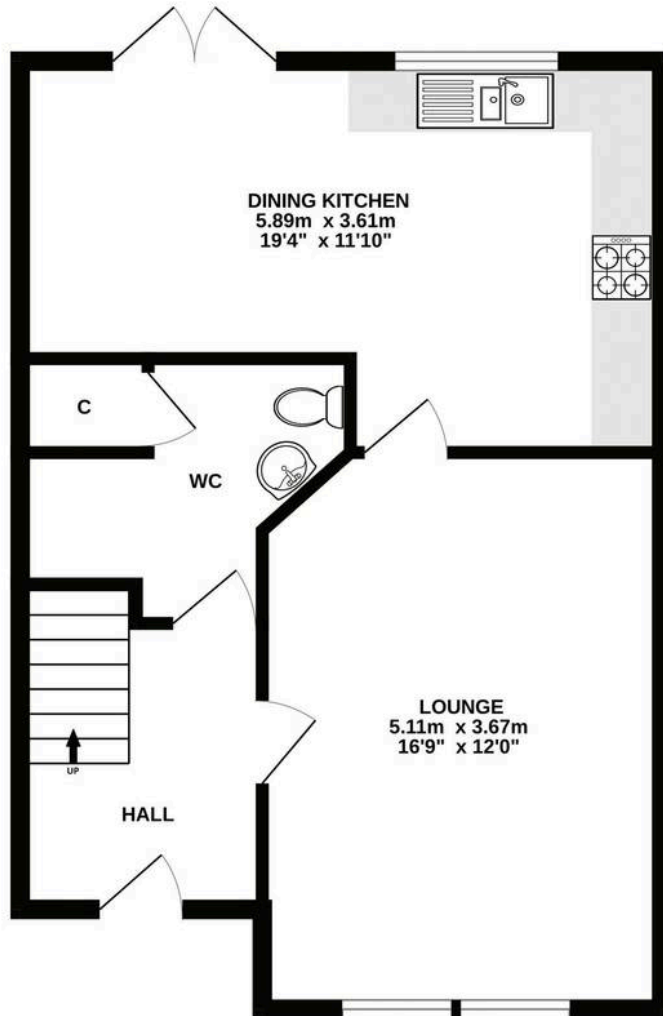




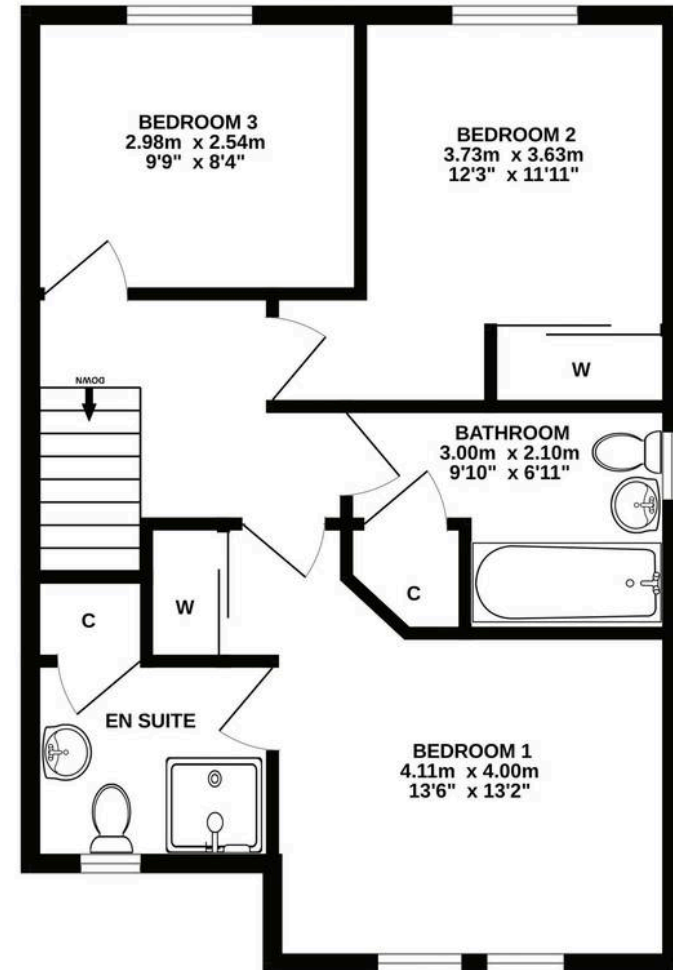




GROUND FLOOR



1ST FLOOR



ALL SIZES TAKEN AT WIDEST POINTS

Whilst every attempt has been made to ensure the accuracy of the floorplan contained here, measurements of doors, windows, rooms and any other items are approximate and no responsibility is taken for any error, omission or mis-statement. This plan is for illustrative purposes only and should be used as such by any prospective purchaser. The services, systems and appliances shown have not been tested and no guarantee as to their operability or efficiency can be given.
Made with Metropix ©2024



Donald Ross Residential Kilmarnock

Donald Ross Residential, 104-106 John Finnie Street – KA1 1BB

01563 550088 • kilmarnock@donaldross.co.uk • www.donaldross.co.uk

While every effort has been made to ensure accuracy, buyers should independently verify all details and review the Home Report before submitting an offer. No warranty or representation is given regarding the property, and neither the agent nor the seller accepts responsibility for any inaccuracies. Buyers must satisfy themselves on all legal aspects.