



1 Birch Place, Kilmarnock

In Excess of £230,000

DONALD
ROSS
RESIDENTIAL



1 Birch Place

Kilmarnock, Kilmarnock

Donald Ross Residential are proud to present to the market this rarely available three bedroom detached bungalow within the highly sought after Grange estate of Kilmarnock. Coming to the market for the first time since its construction in the 60's, this property is perfectly positioned to enjoy an enviable corner plot and boasts bright and spacious interiors including a large sunroom to the rear and a driveway with timber garage. Ideally located close to schools, local amenities and transport links, this property is sure to attract a wide array of prospective buyers.

Council Tax band: E

- Large Corner Plot
- Entrance Porch & Hallway
- Bright & Spacious Lounge
- Kitchen
- Large Sunroom
- Three Double Bedrooms
- Family Bathroom
- Front & Rear Gardens
- Driveway with Timber Garage
- Highly Sought After Residential Area

























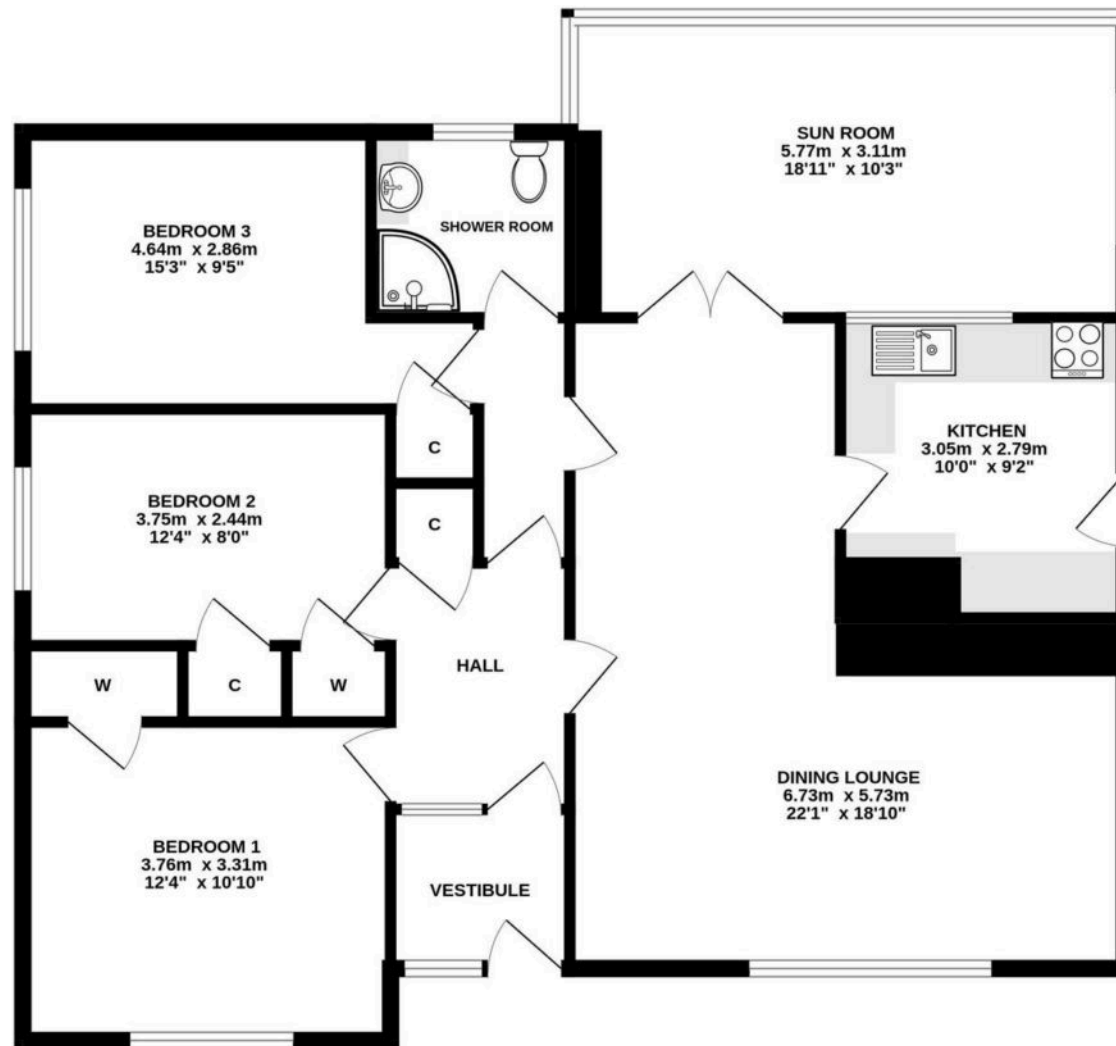








GROUND FLOOR



ALL MEASUREMENTS TAKEN AT WIDEST POINT.

Whilst every attempt has been made to ensure the accuracy of the floorplan contained here, measurements of doors, windows, rooms and any other items are approximate and no responsibility is taken for any error, omission or mis-statement. This plan is for illustrative purposes only and should be used as such by any prospective purchaser. The services, systems and appliances shown have not been tested and no guarantee as to their operability or efficiency can be given.
Made with Metropix ©2025



Donald Ross Residential Kilmarnock

Donald Ross Residential, 104-106 John Finnie Street – KA1 1BB

01563 550088 • kilmarnock@donaldross.co.uk • www.donaldross.co.uk

While every effort has been made to ensure accuracy, buyers should independently verify all details and review the Home Report before submitting an offer. No warranty or representation is given regarding the property, and neither the agent nor the seller accepts responsibility for any inaccuracies. Buyers must satisfy themselves on all legal aspects.