



## The Long Barn, Trabboch Mains

Mauchline

In Excess of £470,000





## The Long Barn

Trabboch, Stair

Donald Ross Residential are proud to introduce The Long Barn, a newly built three-bedroom, four-bathroom countryside cottage nestled in the serene locale of Trabboch, Stair. This exquisite property showcases exceptional craftsmanship and high-quality finishes throughout, offering a harmonious blend of contemporary luxury and rural charm. The spacious interiors are thoughtfully designed to provide comfort and style, while the picturesque surroundings offer a tranquil retreat from the bustle of city life. Experience the perfect balance of modern living and countryside serenity at The Long Barn.

Council Tax band: E

EPC Energy Efficiency Rating: C

- New Build
- High Quality Finishings Throughout
- Welcoming Entrance Vestibule
- Spacious Lounge / Kitchen
- Three Large Double Bedrooms
- Master Bedroom with Walk-In Wardrobe
- Four Bathrooms (3 En Suite + Family Bathroom)
- Laundry Room / Boot Room
- Bright & Airy Living Spaces
- Tranquil Countryside Setting













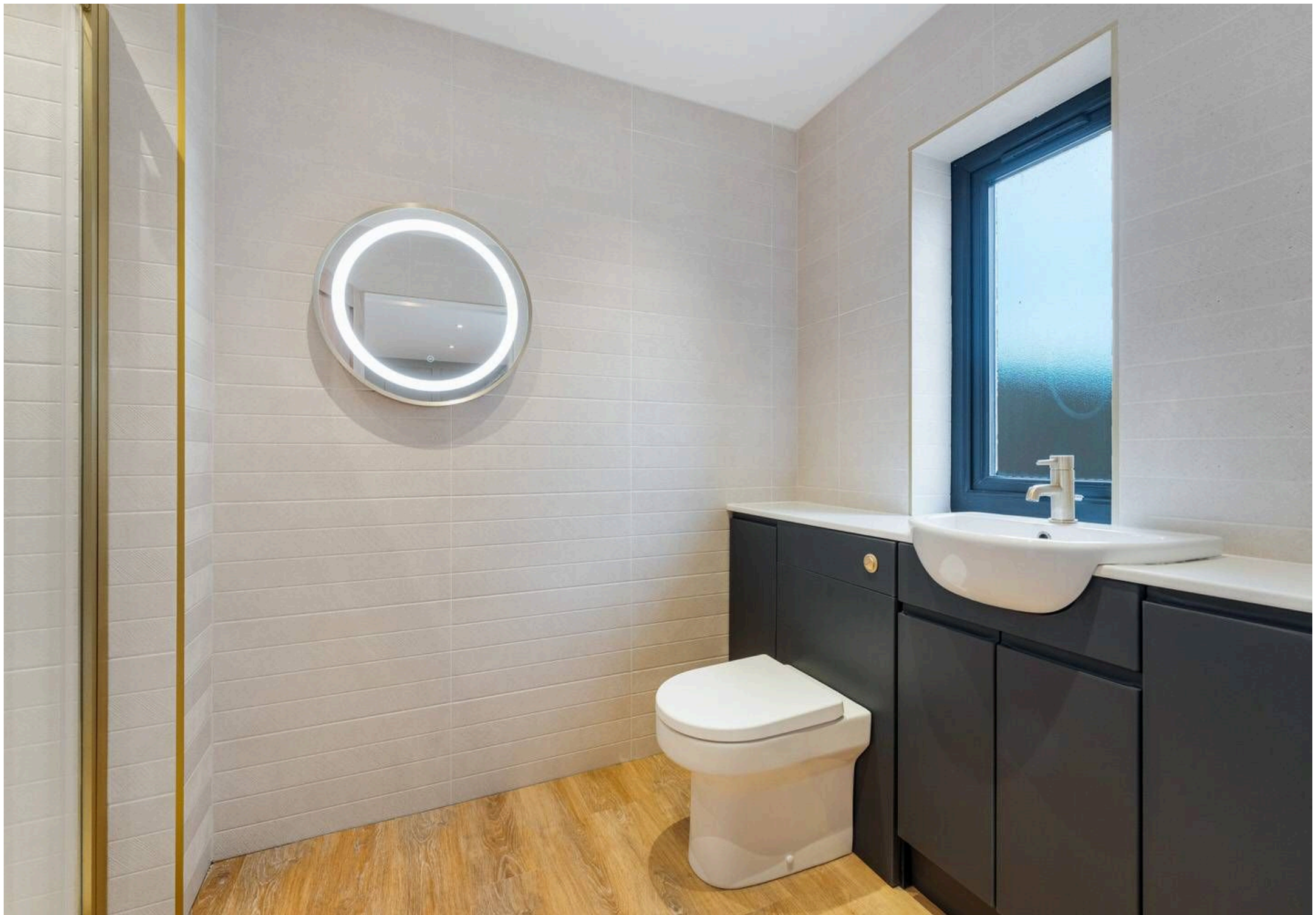




























































# Donald Ross Residential Kilmarnock

Donald Ross Residential, 104-106 John Finnie Street – KA1 1BB

01563 550088 • kilmarnock@donaldross.co.uk • www.donaldross.co.uk

While every effort has been made to ensure accuracy, buyers should independently verify all details and review the Home Report before submitting an offer. No warranty or representation is given regarding the property, and neither the agent nor the seller accepts responsibility for any inaccuracies. Buyers must satisfy themselves on all legal aspects.