



For Sale:

5 Bedroom  
Detached Bungalow

Offers in Excess of £320,000

2  
Altonhead Terrace  
Cunninghamhead  
KA3 2PA

For more information contact:

01563 550088  
kilmarnock@donaldross.co.uk

[www.donaldross.co.uk](http://www.donaldross.co.uk)





# 2, Altonhead Terrace, Cunninghamhead, KA3 2PA

Donald Ross Residential are delighted to welcome to the market 2 Altonhead Terrace. Perfectly positioned within the leafy countryside hamlet of Cunninghamhead, this beautifully presented five bedroom detached bungalow offers generously proportioned, flexible accommodation throughout with three primary bedrooms and family bathroom situated on the ground floor along with two further bedrooms and two en-suite's on the first floor. Having been meticulously maintained throughout the years by the current owners, this property is presented in walk-in condition and benefits from private front and rear gardens, driveway and large double garage to the rear, all while being located just a short journey to local amenities and access to transport links to Glasgow and surrounding areas.

- Welcoming Entrance Hall
- Spacious and Bright Lounge
- Modern Kitchen
- Five Double Bedrooms
- Three Bathrooms (Two En Suite + Family Bathroom)
- Private Front & Rear Gardens
- Driveway with Detached Double Garage
- Tranquil Countryside Setting
- Short Drive from M77 Motorway
- Highly Sought After Residential Area

**Council Tax**  
Band E

**Energy Efficiency Rating**  
Band E

**Viewing**  
Is by appointment only which can be arranged by contacting us on:

Tel: 01563 550088  
Email: [kilmarnock@donaldross.co.uk](mailto:kilmarnock@donaldross.co.uk)

Mon to Fri: 9am – 5:30pm  
Sat: 10am – 2pm  
Sun: 10am – 2pm

Offers in Excess of £320,000



[www.donaldross.co.uk](http://www.donaldross.co.uk) | 01563 550088 | [kilmarnock@donaldross.co.uk](mailto:kilmarnock@donaldross.co.uk)







Handwritten notes and a photograph pinned to the green wall.

Light switch on the green wall.

























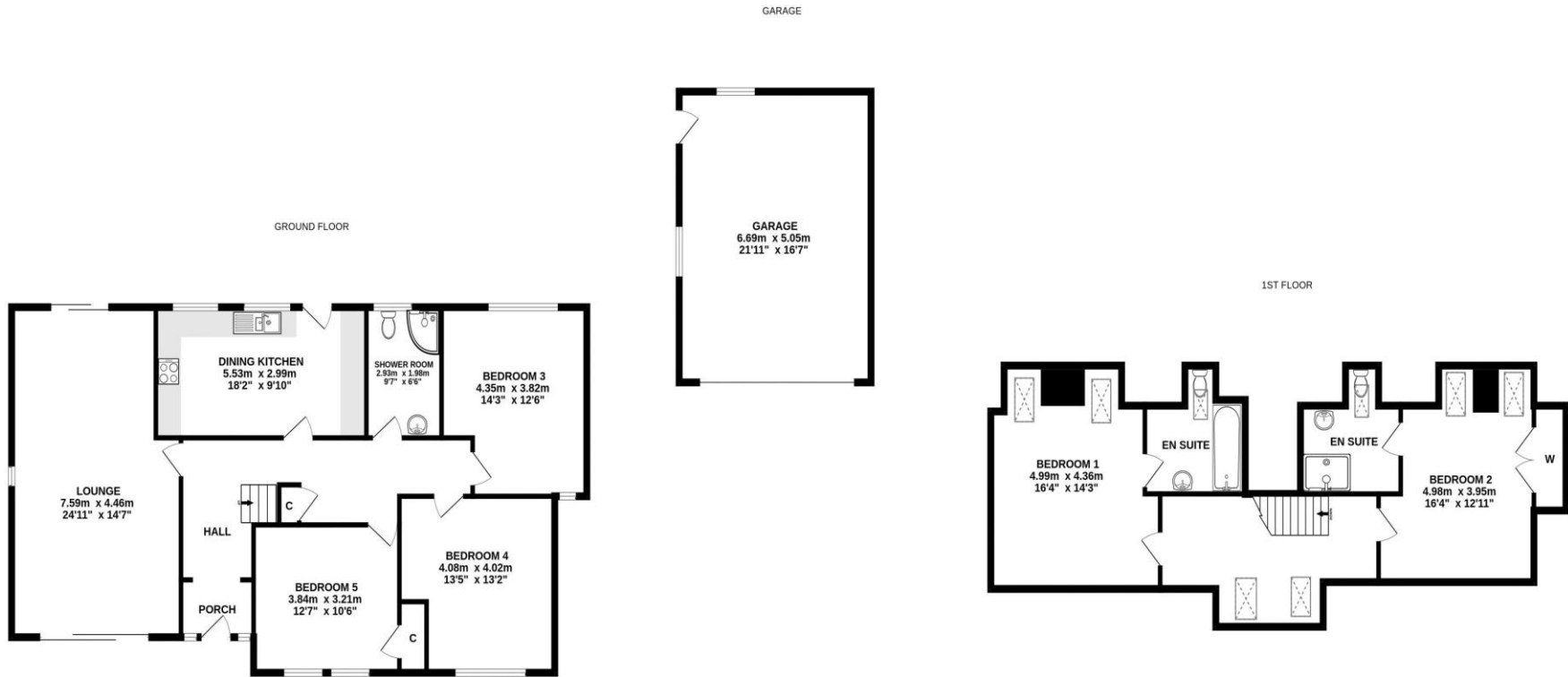








# Gross Internal Floor Size 191 m<sup>2</sup>



ALL SIZES TAKEN AT WIDEST POINTS

Whilst every attempt has been made to ensure the accuracy of the floorplan contained here, measurements of doors, windows, rooms and any other items are approximate and no responsibility is taken for any error, omission or mis-statement. This plan is for illustrative purposes only and should be used as such by any prospective purchaser. The services, systems and appliances shown have not been tested and no guarantee as to their operability or efficiency can be given.  
Made with Metropix ©2024

Donald Ross Residential, unlike most estate agents who are part of a franchise group or PLC, are privately owned and completely independent. Independence allows us to offer our clients a genuinely personal service geared solely towards the very best advice and assistance when selling your home. Donald Ross Residential was formed in 1985 and is one of Ayrshire's longest established estate agents. With a highly qualified and experienced team, Donald Ross Residential is the Estate Agent of choice when you are considering buying or selling your home. Donald Ross Residential is proud to be members of The Property Ombudsman for Estate Agents.

We have done everything possible to ensure that the details included in this property schedule were correct at the time of going to print. Donald Ross will not be held liable for errors or omissions in this property schedule. We recommend that all home buyers view the home report before committing to purchase a property. ©2009 Donald Ross. All rights reserved.



106 John Finnie Street, Kilmarnock KA1 1BB  
Tel: 01563 550088  
Email: [kilmarnock@donaldross.co.uk](mailto:kilmarnock@donaldross.co.uk)  
[www.donaldross.co.uk](http://www.donaldross.co.uk)

Donald Ross Estate Agents Limited,  
Registered in Scotland No.SC290184  
Directors: Jacqueline Miller, Fraser Stewart.

[www.donaldross.co.uk](http://www.donaldross.co.uk)

