



**Price**

**£1,800 PCM**

Fees Apply



Available 11/04/25

**285 High Road  
Chadwell Heath RM6**



**DOUGLAS  
ALLEN**

Helping you move forwards



## Main Features

- Allocated Parking
- En-suite Shower Room
- Gas Central Heating
- Balcony
- Light & Airy
- Under 1 Mile To Station



**Deposit required is £2,076.92**  
**Barking and Dagenham London - Council Tax Band Tax Band C**

Renting a property is a big commitment and we recommend that you visit the local authority website and these websites which offer helpful information and advice about letting

[www.gov.uk/government/publications/how-to-rent](http://www.gov.uk/government/publications/how-to-rent)

[www.gov.uk/private-renting](http://www.gov.uk/private-renting)

[www.douglasallen.co.uk/renting/tenancy-fees-individuals/](http://www.douglasallen.co.uk/renting/tenancy-fees-individuals/)

[www.gov.uk/green-deal-energy-saving-measures](http://www.gov.uk/green-deal-energy-saving-measures)

**Call Basildon 01268 525421 ■ [douglasallen.co.uk](http://douglasallen.co.uk)**

IMPORTANT INFORMATION: Please contact our Lettings Team who will confirm the total costs involved in renting this property. For clarification, we wish to inform the prospective tenant that we have prepared these details as a general guide. The agent has not carried out a detailed survey nor tested the services, appliances, or specific fittings (unless otherwise stated), and no warranty can be given as to their condition. All room measurements are taken at floor level. We strongly recommend that all the information which we provide about the property is verified by yourself and your advisers. The contents of this publication are © Dougl's Allen, 2015. Dougl's Allen is a trading name of Arun Estates Limited Registered in England No. 2597969

## Accommodation

**Communal Hallway**

**Hall**

**Lounge/Kitchen** 6.68 x 3.10

**Balcony**

**Bedroom 1** 4.50 x 3.21

**En-suite Shower**

**Bedroom 2** 4.39 x 2.19

**Bathroom**

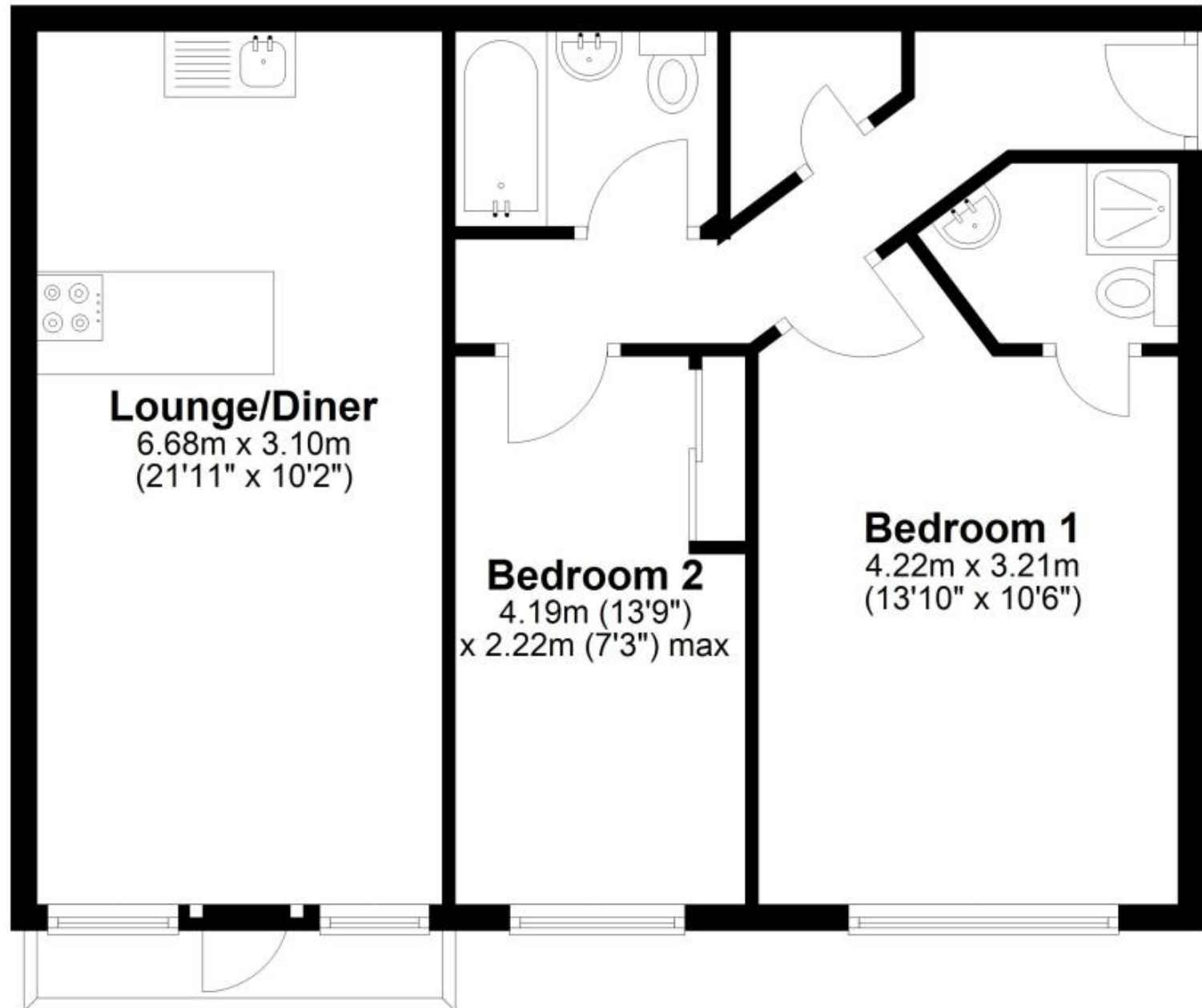
**Allocated Parking Space**

EPC RATING		CURRENT:	POTENTIAL:



## Second Floor

Approx. 58.7 sq. metres (631.9 sq. feet)



Total area: approx. 58.7 sq. metres (631.9 sq. feet)