

Taurus Close,



£190,000

IH INGLEBY HOMES





Attractive and modern throughout, whilst enjoying a generous rear garden, side drive and garage - this modern three bedroom property certainly merits early inspection.

Built by 'Bellway Homes' and situated on the popular 'Queensgate' development, this spacious, three bedroom semi-detached property is built to one of the larger designs originally available. Delivering well-planned and spacious accommodation that is 'well-finished' and modern throughout.

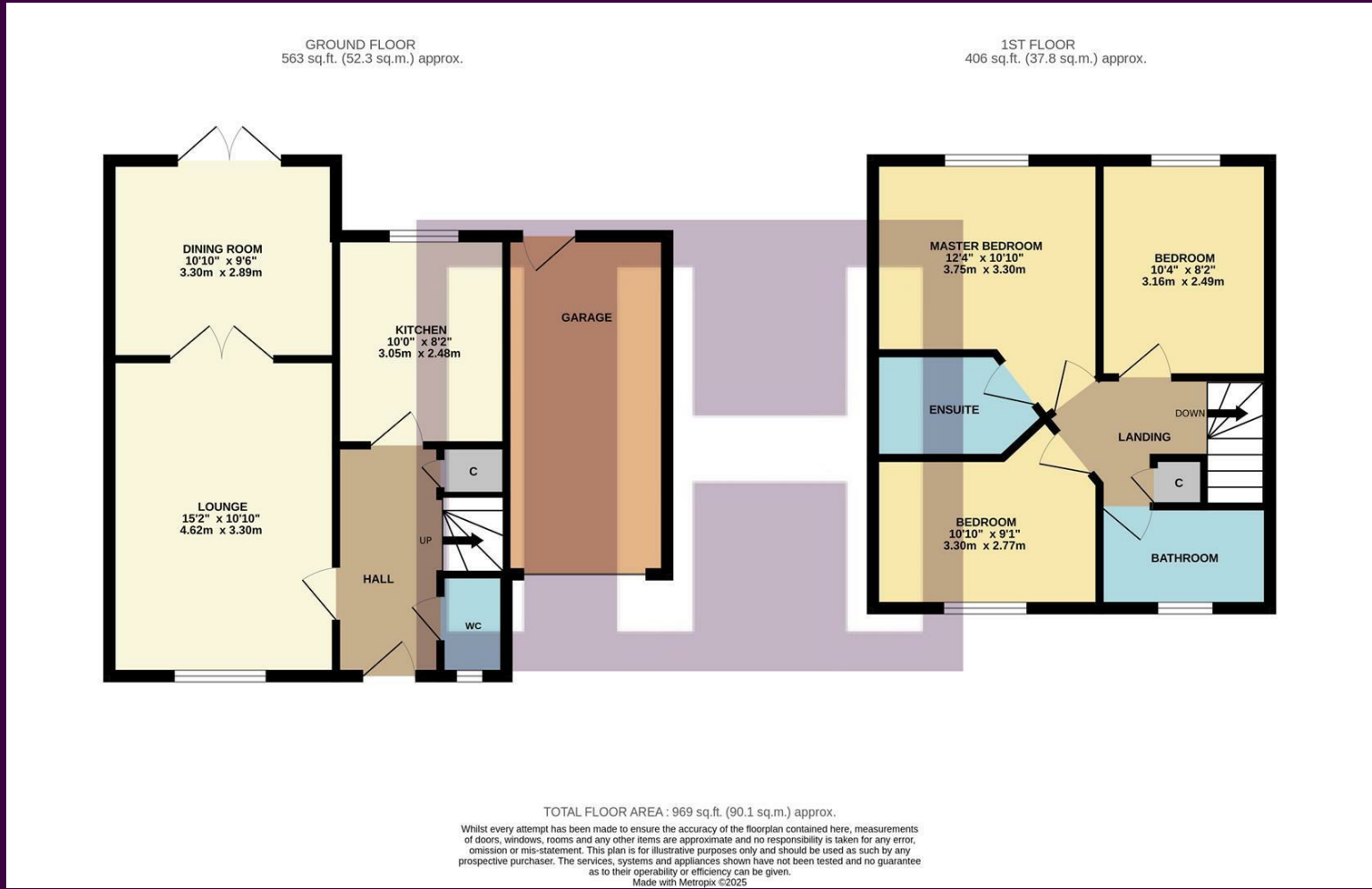
The three generous bedrooms are a particular feature, along with the separate living areas on the ground floor consisting of a generous lounge, dining room with 'French' doors to the garden, and fitted, modern kitchen.

Briefly, the accommodation comprises an entrance hall, cloakroom/WC, independent lounge, dining room and kitchen to the ground floor. The first floor brings the three bedrooms, 'Master' with ensuite and separate family bathroom.

The generous rear garden is fully fence enclosed, with generous well-tended lawn, and patio.

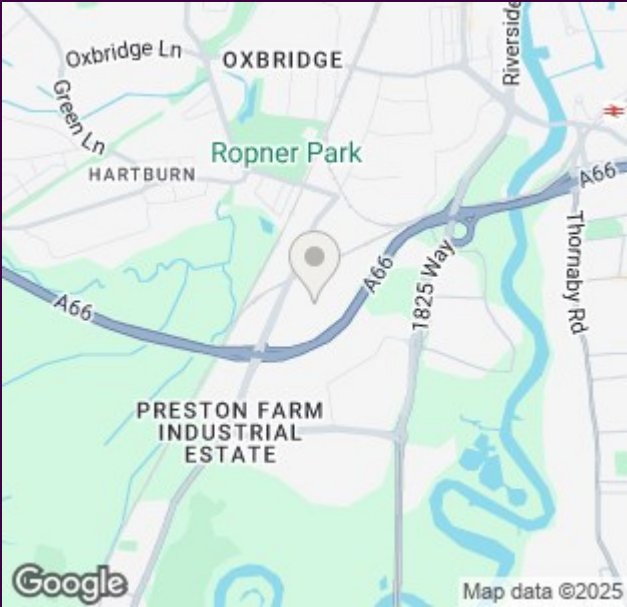


The Layout

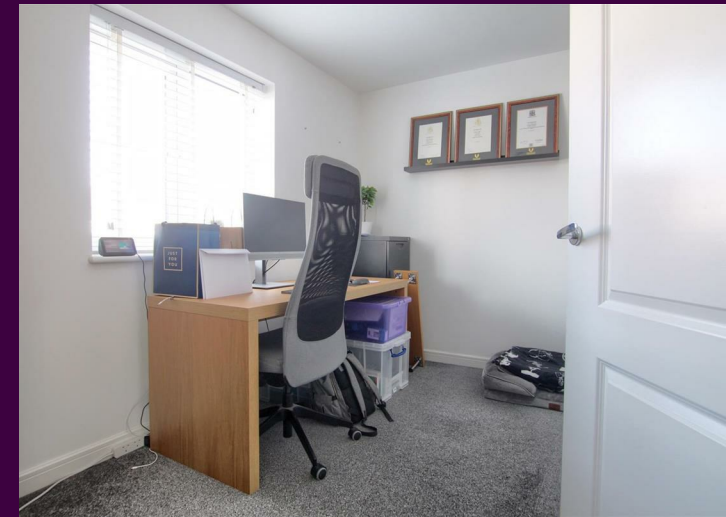


Energy Efficiency Rating			Environmental Impact (CO ₂) Rating		
	Current	Potential		Current	Potential
Very energy efficient - lower running costs			Very environmentally friendly - lower CO ₂ emissions		
(92 plus) A		93	(92 plus) A		
(81-91) B			(81-91) B		
(69-80) C	80		(69-80) C		
(55-68) D			(55-68) D		
(39-54) E			(39-54) E		
(21-38) F			(21-38) F		
(1-20) G			(1-20) G		
Not energy efficient - higher running costs			Not environmentally friendly - higher CO ₂ emissions		
England & Wales			England & Wales		
EU Directive 2002/91/EC			EU Directive 2002/91/EC		

The Location



Council Tax Band:
Tenure: Freehold



- Spacious three bedroom property
- Favoured 'Queensgate' development
- Separate lounge, dining room and impressive kitchen
- Three great bedrooms, 'Master' with ensuite
- CLL 01642 671025 TO VIEW