

Hadleigh Walk, Ingleby Barwick

Asking Price £89,500

IH INGLEBY HOMES





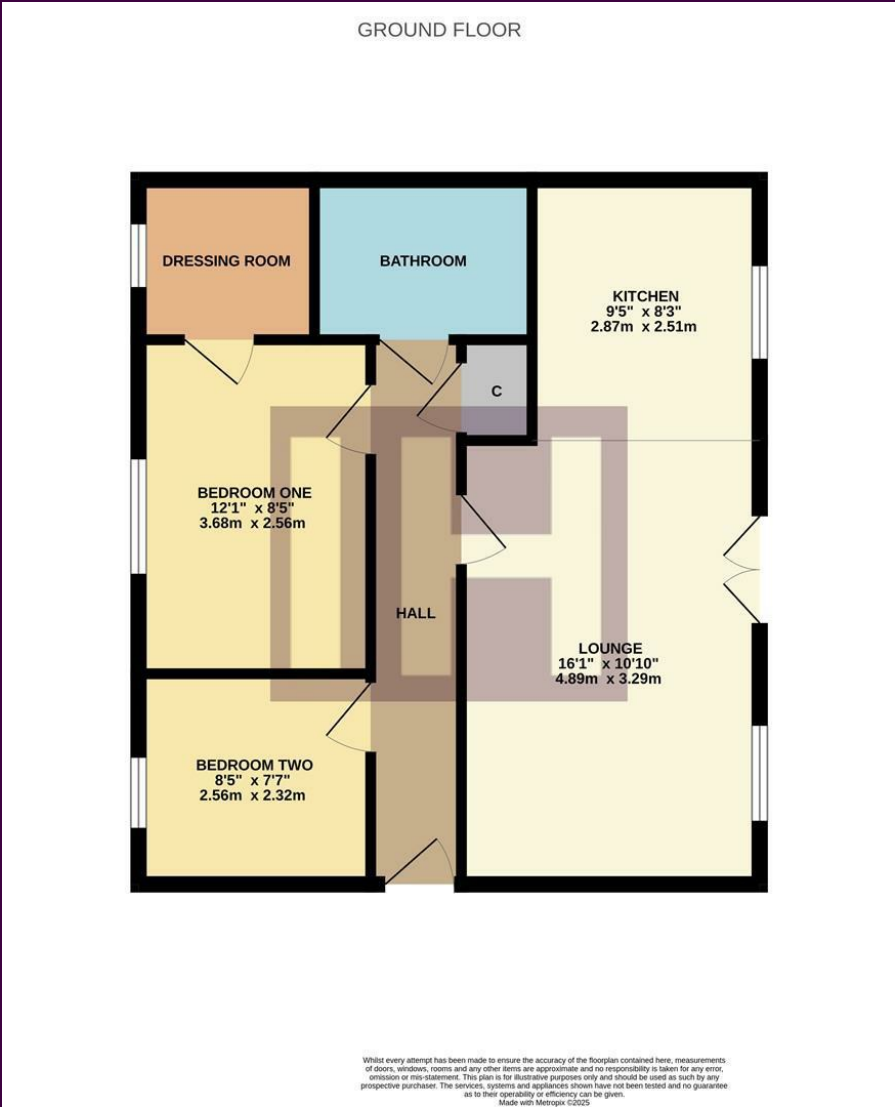
Especially attractive, and stylishly presented, this two bedroom, first-floor apartment is a great example of its kind.

Situated within this purpose built development, located within the 'Heart' of Ingleby Barwick, with fantastic amenities on-hand, including excellent shopping, eateries and bars. A rear car park brings numbered, allocated bays for each apartment, with additional visitor spaces, and the apartment benefits from a secure, intercom access system.

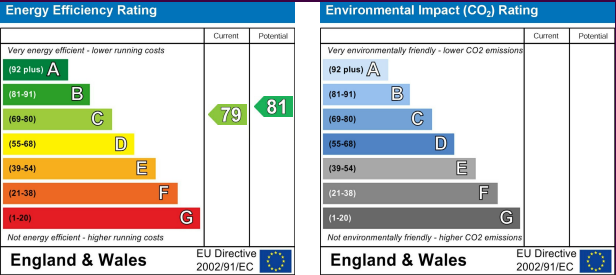


Internally, the accommodation is very well presented and modern, comprises an entrance hall, generous open-plan lounge/diner/kitchen, two good bedrooms, the larger with an adjoining dressing room, and separate modern family bathroom.

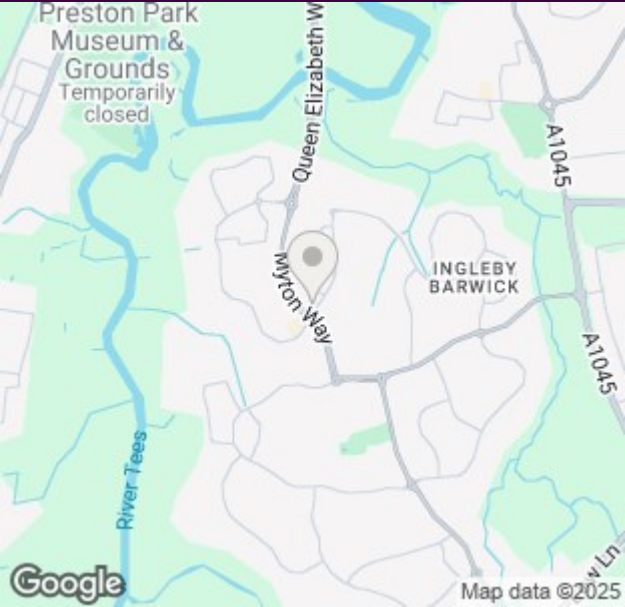
The Layout



Council Tax Band:
Tenure: Leasehold



The Location





- Impressive two bedroom apartment
- Modern and stylishly presented
- Generous open-plan lounge/diner/kitchen
- Two good bedrooms, larger with adjoining dressing room
- Allocated parking bays, secure intercom system
- No forward chain