

Hatchlands Park, Ingleby Barwick

£158,000

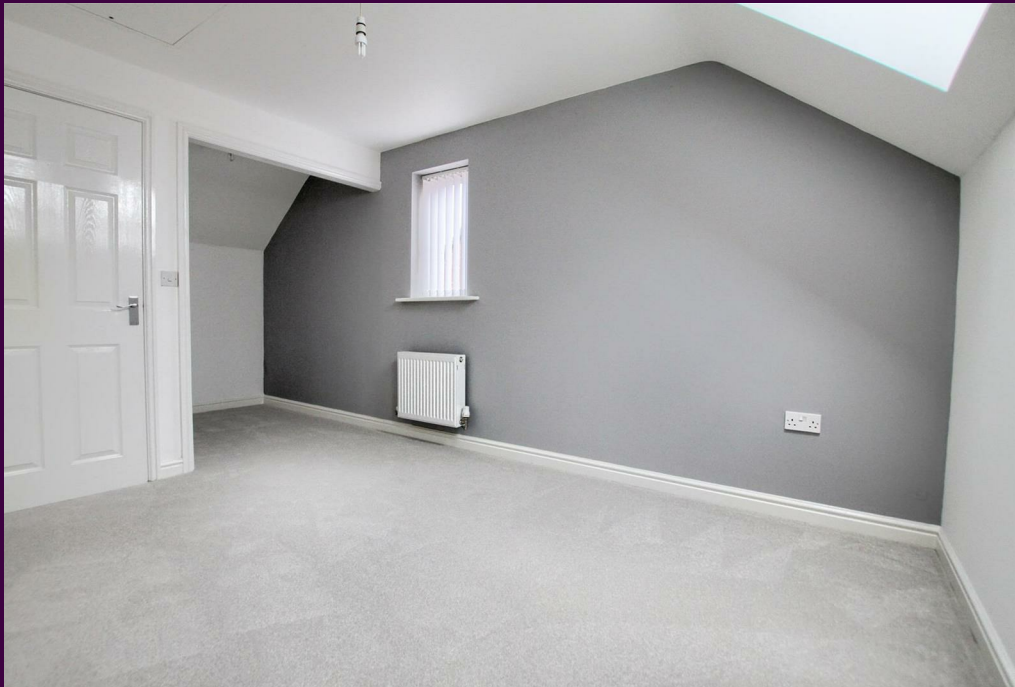
IH INGLEBY HOMES





This attractive three storey property is located in the popular 'Broom Hill' area of Ingleby Barwick. A design that is especially popular with first time buyers, young family's, and those seeking an ideal 'buy to let'.

Briefly the accommodation comprises entrance hall, lounge, inner hall, cloakroom/WC and kitchen/diner to the ground floor. The first floor delivering the family bathroom and two of the three double bedrooms, the larger with a range of fitted robes. The third double bedroom is available on the second floor. What was once a built in 'walk-in' robe has been removed to provide more space, to what was already a generous room.

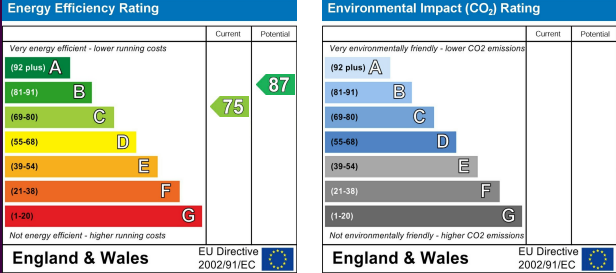


A side drive provides off road parking and the rear garden is fully fence enclosed, designed for low maintenance. Early viewing recommended.

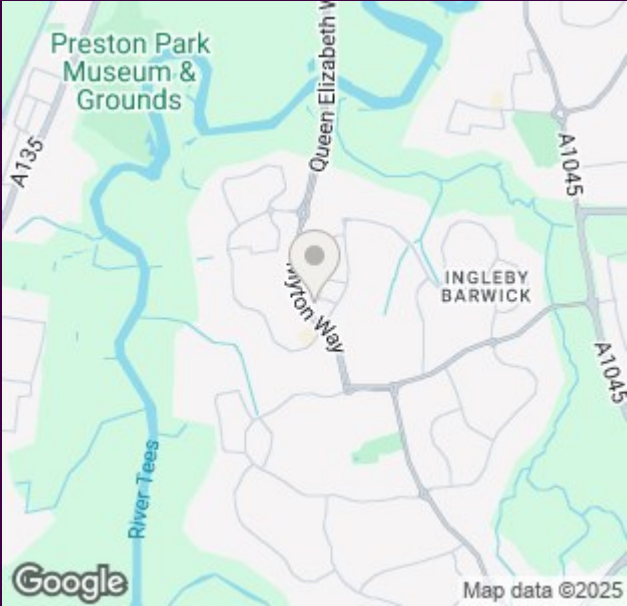
The Layout



Council Tax Band: C
Tenure: Freehold



The Location





- Impressive example of its kind
- Redecorated and re-carpeted throughout
- Accommodation over three levels - three double bedrooms
- Side drive, low maintenance rear garden
- Broomhill area of Ingleby Barwick