

Ravensgill Road, Hemlington



£189,950

**IH** INGLEBY HOMES









This modern three bedroom semi-detached property is attractive throughout, built by 'Taylor Wimpey' to this deceptively spacious and especially popular design.

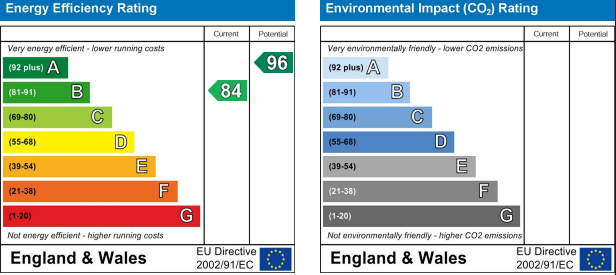
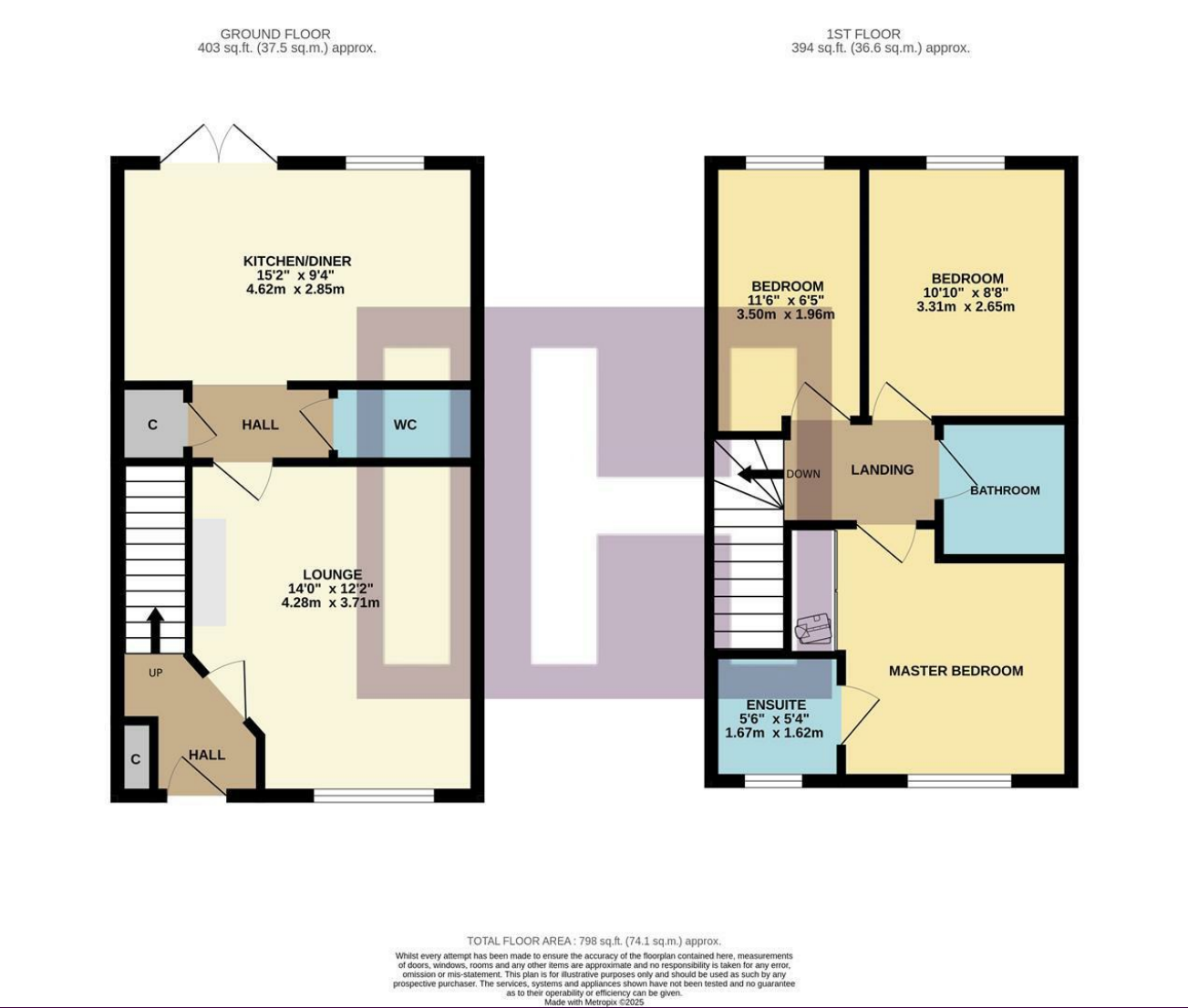
Located on the sought-after 'Elderwood Park' development, enjoying a double-width front drive, and lovely enclosed rear garden, with generous re-laid patio, pergola, lawn and timber shed within the fenced boundaries, all enjoying a sunny, southerly aspect.



Internally, the impressive accommodation briefly comprises an entrance hall, lounge - with built-in media wall, and superb open-plan kitchen/diner with feature 'Venetian Plaster' wall, to the ground floor. The first floor brings three good bedrooms, the 'Master' with modern ensuite and fitted 'mirror' siding robes, separate family bathroom.

Available with 'No Forward Chain'

# The Layout

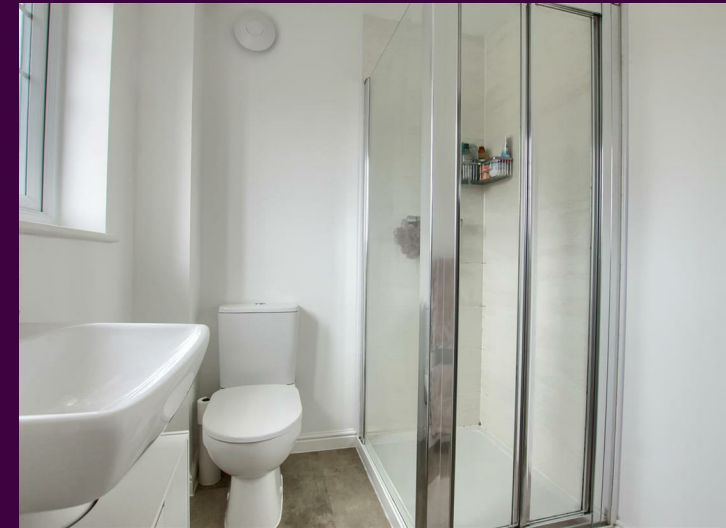


# The Location



Council Tax Band: C  
Tenure: Freehold





- Sought-after 'Elderwood Park' development
- Popular 'Taylor Wimpey' design
- Media wall built into lounge
- Superb open-plan kitchen/diner
- 'Master' bedroom with robes and ensuite
- Attractive rear garden with large patio and pergola