

Sir Douglas Park,



£795

**IH** INGLEBY HOMES









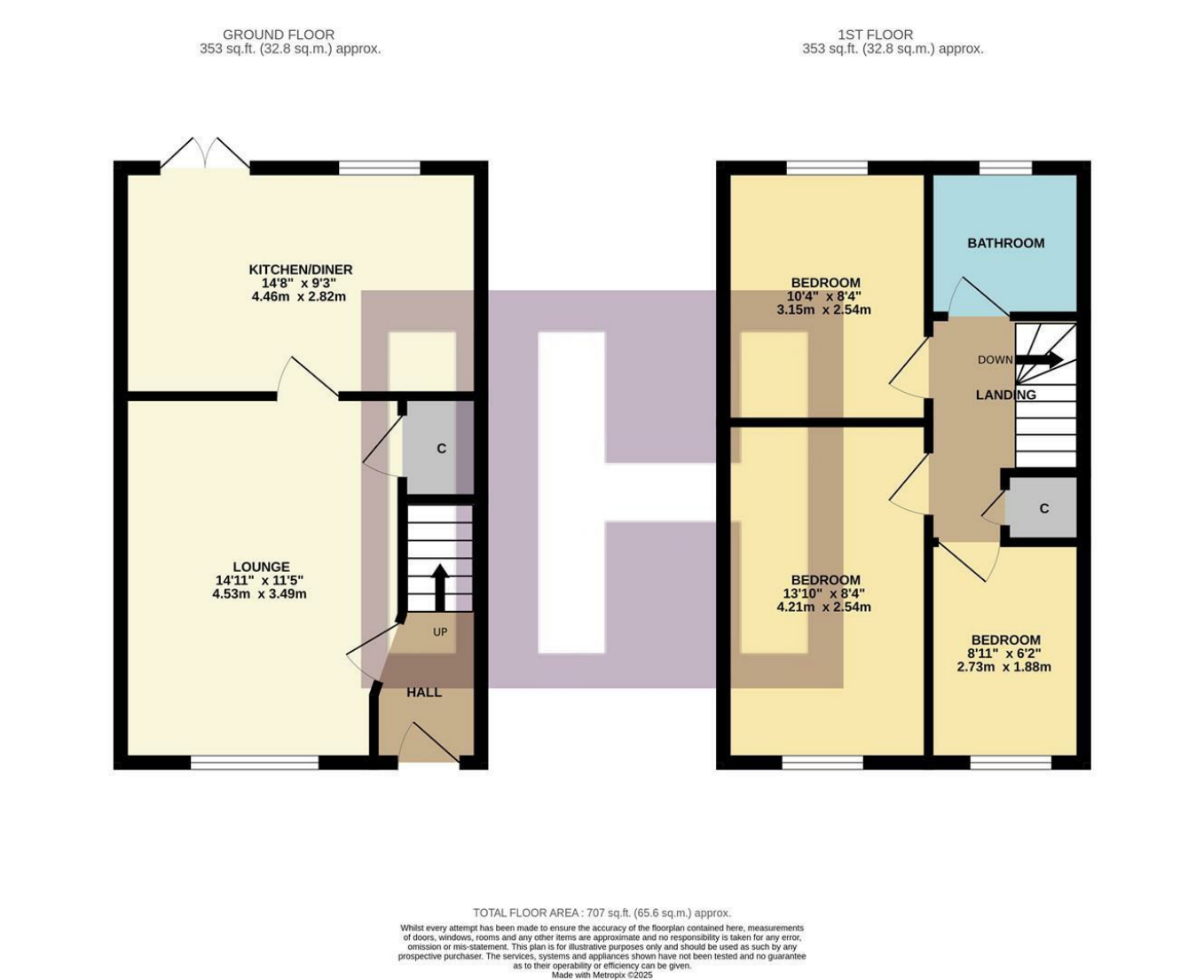
This attractive, three bedroom property is available for immediate let, and early inspection is certainly advised.

Situated within this modern Thornaby development, whilst occupying a pleasant corner position, which enjoys a rear drive/parking, front garden, and generous enclosed rear garden with surprisingly generous side space.

Internally, the property is modern, clean, and ready to move into, with the accommodation briefly comprising an entrance hall, spacious lounge, and pen-plan kitchen/diner to the ground floor. The first floor bringing three good bedrooms, and the family bathroom.



# The Layout







- Available for IMMEDIATE LET
- Popular, modern Thornaby development
- Generous corner plot, with wrap-around side and rear gardens
- Rear drive allowing off-road parking
- Attractive throughout and ready to move into
- Early viewing advised
- £795 RENT
- £917.30 BOND
- £183.46 HOLDING FEE