

Thirlwall Drive, Ingleby Barwick



£795 Per Calendar Month

**IH** INGLEBY HOMES







Available for IMMEDIATE LET, early viewing essential.

This well appointed and very attractive three bedroom property is deceptively spacious, whilst enjoying fresh décor and floorings, certainly ready to move in to.

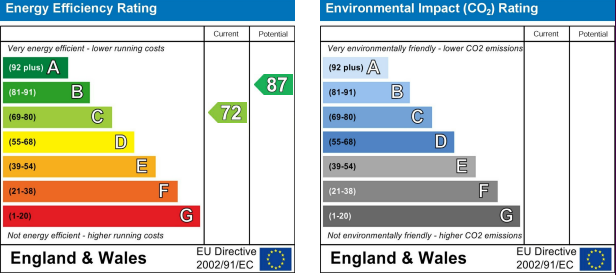
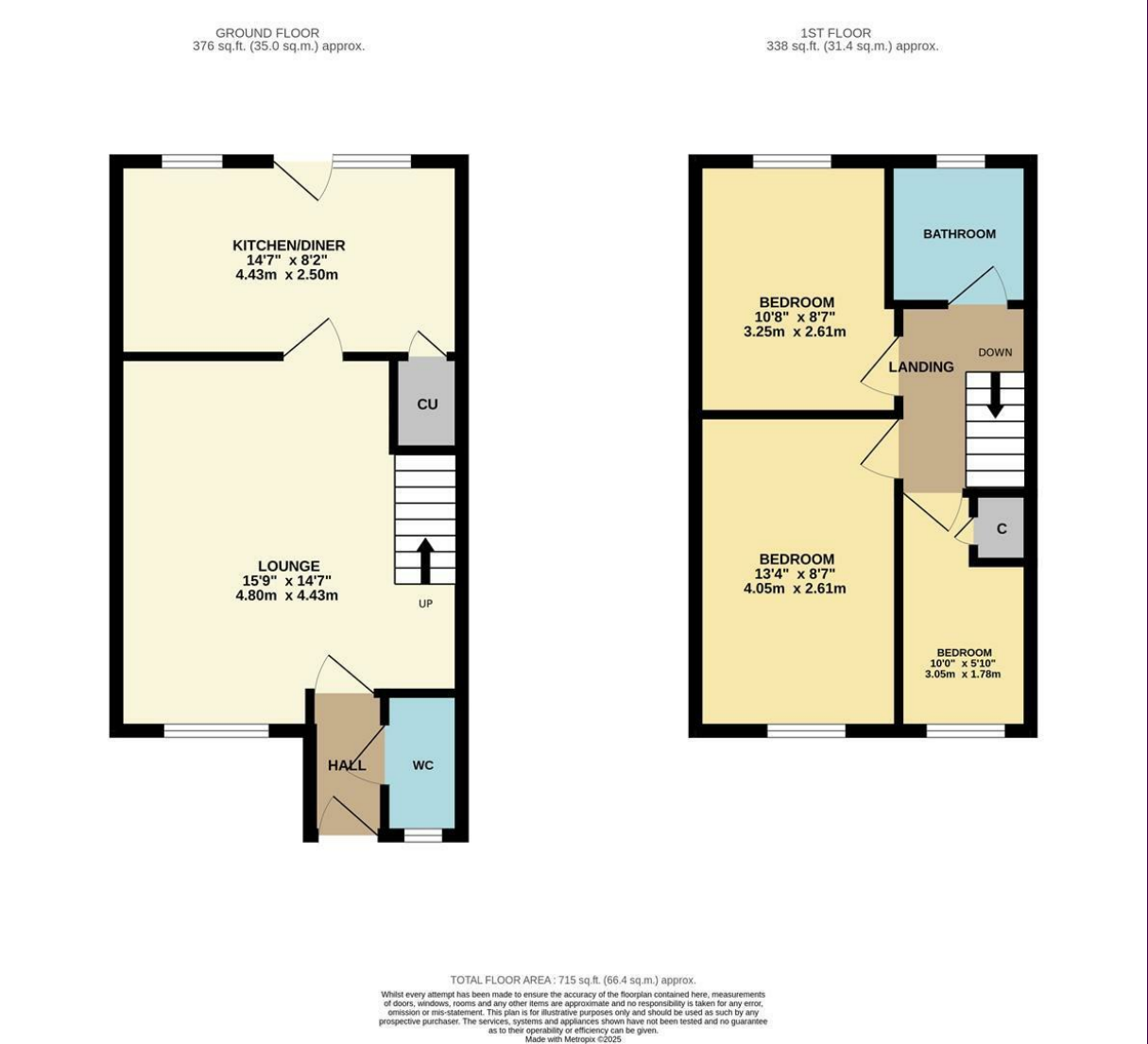
Briefly, the accommodation comprises an entrance hall, cloakroom/WC, spacious lounge with stairs to the first floor, and separate modern kitchen/diner on the ground floor. The first floor brings three bedrooms, and the family bathroom with three-piece suite, and over-bath shower.



Ideally position for local schooling within this quiet cul-de-sac, the property brings an enclosed, low-maintenance rear garden, with a private rear outlook.



# The Layout



# The Location



Council Tax Band: B  
Tenure:



- Available for IMMEDIATE LET, and ready to move in to
- Attractive and well appointed, fresh décor
- Ideally positioned for local schooling
- Spacious lounge, separate modern kitchen/diner
- Enclosed rear garden
- RENT - £795
- BOND - £917
- HOLDING FEE - £ 183.46
- COUNCIL TAX BAND B