

Fishbourne Grove, Ingleby Barwick

TS17 5LG



£340,000

- An impressive, five bedroom, three bathroom property
- Modern accommodation over three levels
- Lovely position at the end of a desirable cul-de-sac
- South facing rear garden with surprisingly generous side space
- Recently installed solar panels with 2x Duracell 5KW batteries
- Extended parking and garage

Home, Changes Everything





Sitting at the end of this desirable cul-de-sac within this more established 'Rings' location, with easy access to lovely river walks and greenery, whilst being well positioned for local schooling and amenities, this impressive family property certainly merits early inspection.



Delivering modern, and spacious accommodation over three levels, and boasting five bedrooms, two with ensuite, and a further family bathroom.

Recently installed solar panels (2024) take further advantage of the south facing rear aspect, feeding 2x 5KWhr Duracell batteries, that will benefit the owner with reduced 'day to day' running costs.

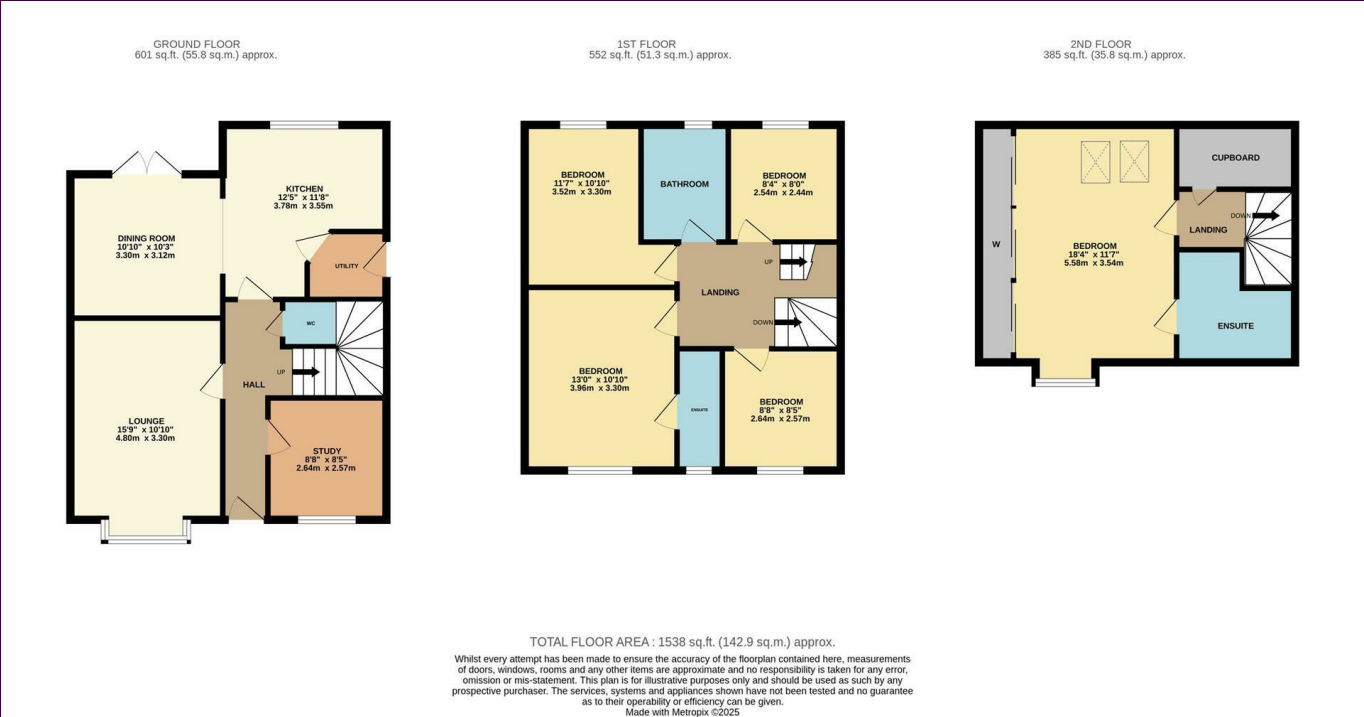


The living space briefly comprises an entrance hall, independent lounge, study/playroom, cloakroom/WC, and utility room off the modern fitted kitchen, which is open-plan to the dining room on the ground floor. The first floor brings four of the bedrooms, one being ensuite, along with the modern family bathroom. A fabulous 'Master' occupies the second floor, with a large double bedroom enjoying fitted robes, and further ensuite.

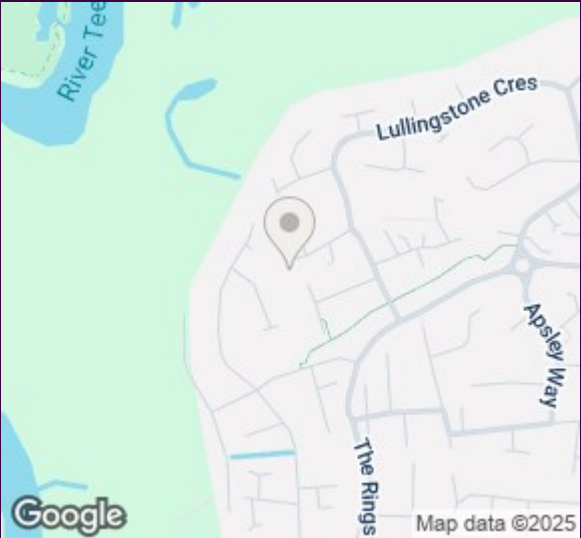
The parking to the front has been extended, and approaches the detached garage, with an EV charging point, and external power sockets are available at bot the front and rear aspects. The rear garden is fully fence enclosed, laid mainly to lawn and wraps around the side, with a near end patio.



The Layout



The Location



Home, Changes Everything



Fishbourne Grove



Council Tax Band: E
Tenure: Freehold

www.ingleby-homes.co.uk

Tel: 01642 671025

Email: sales@ingleby-homes.co.uk

IH INGLEBY HOMES