

# Kirknewton Grove, TS17 0PS



£895 Per Calendar Month

- Modern, three bedroom semi-detached property
- Attractive and ready to move in to
- Favoured Ingleby Barwick location, ideal for schooling
- Cul-de-sac position, with front and rear gardens, drive and garage
- Available immediately
- £895 RENT
- £1032 DEPOSIT
- £206.53 HOLDING FEE
- COUNCIL TAX BAND C

# Home, Changes Everything







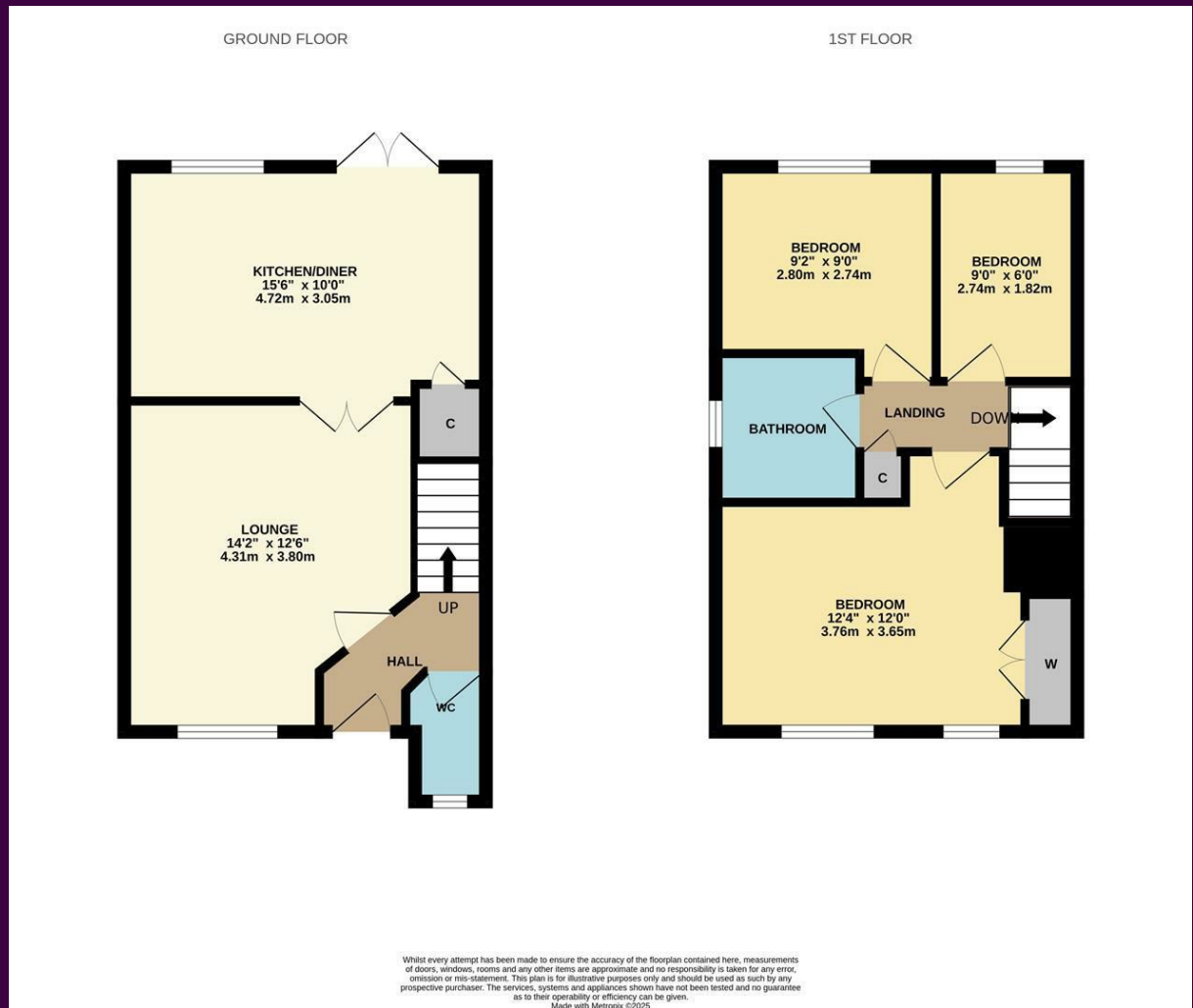
Situated within this popular Ingleby Barwick area, close to 'highly thought of' schooling, whilst enjoying a lovely cul-de-sac position - early viewing is advised.

Modern and attractive throughout, ready to move in to, and available immediately.

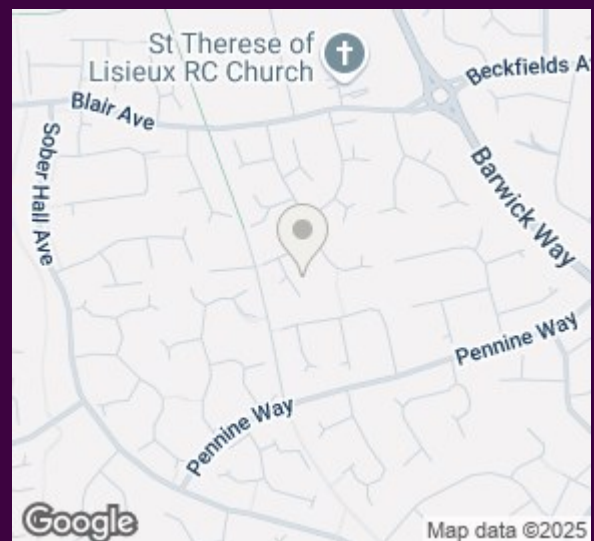
Lovely front and rear gardens, drive ad garage.

Accommodation briefly comprises an entrance hall, cloakroom/WC, lounge, and spacious kitchen/diner to the ground floor. The first floor brings three bedrooms, the main with fitted robes, a feature repeated in bedroom three, separate modern family bathroom.

# The Layout



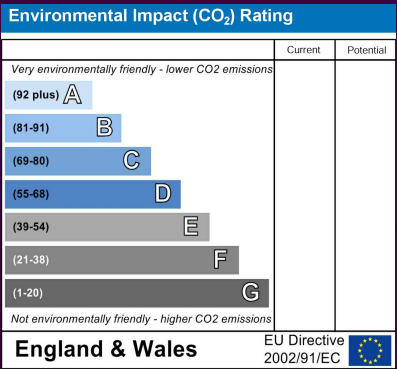
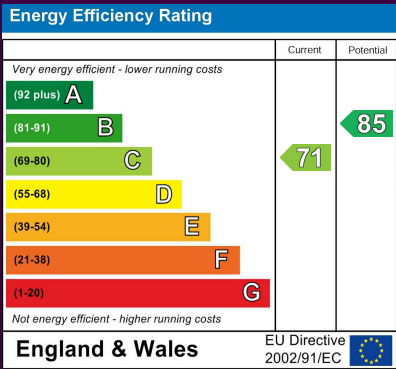
# The Location



# Home, Changes Everything



# Kirknewton Grove



Council Tax Band: C  
Tenure:

[www.ingleby-homes.co.uk](http://www.ingleby-homes.co.uk)

Tel: 01642 671025

Email: [sales@ingleby-homes.co.uk](mailto:sales@ingleby-homes.co.uk)