

Kingsbridge Crescent, TS5 4GE



£130,000

- A fine example of its kind, viewing advised
- Modern Acklam development
- Impressive landscaped gardens, lengthy side drive
- Two double bedrooms
- Spacious lounge with LVT flooring
- Modern kitchen/diner

Home, Changes Everything





A fine example of its kind, well-appointed, attractive and 'turn-key' ready! Internal inspection is certainly recommended when it comes to this impressive, two-double bedroom property.



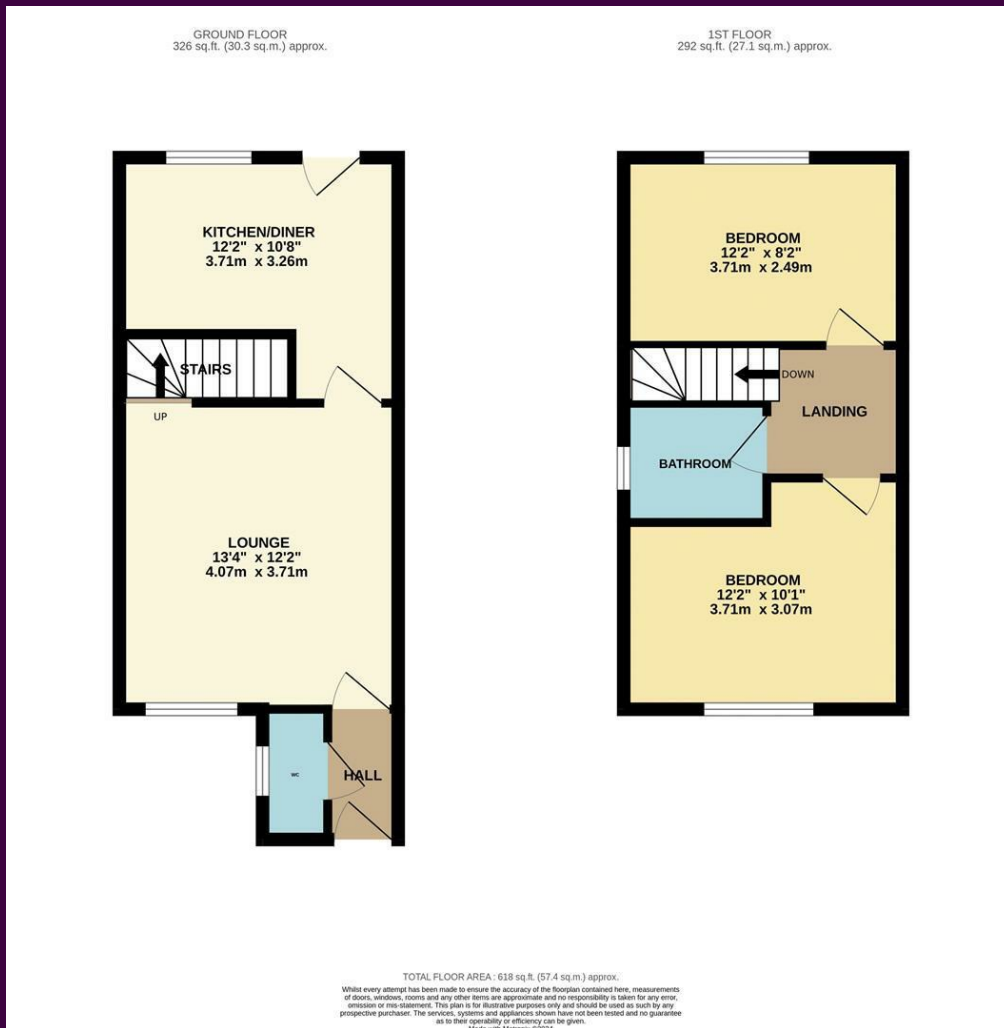
Located within this modern Gleeson development, located just off 'Acklam Road' - enjoying a lengthy side drive, and landscaped, front and rear gardens.



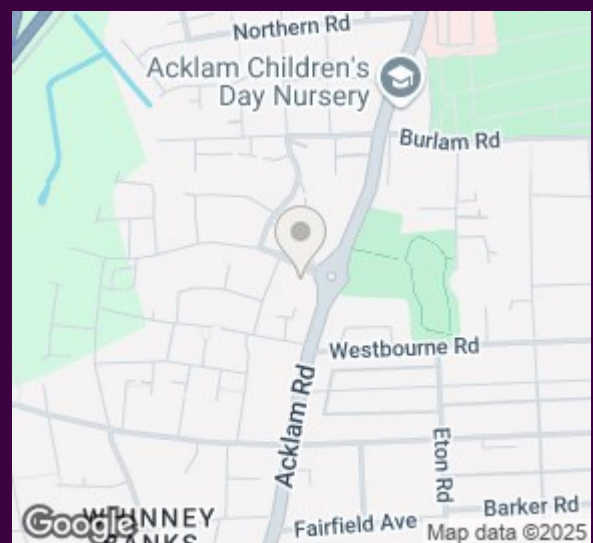
Internally, the accommodation very briefly comprises an entrance hall, cloakroom/WC, spacious lounge with quality 'LVT' flooring, and separate modern kitchen/diner to the ground floor. The first floor delivers two good bedrooms, along with the stylish family bathroom. The front garden has been re-laid to artificial grass for low maintenance, with the gravelled side drive allowing ample parking. The rear garden is fully fence-enclosed, with large patio, tiered artificial lawn, and further gravelled area - all enjoying a sunny, southerly aspect.



The Layout



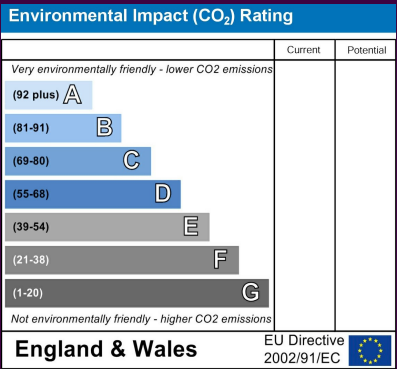
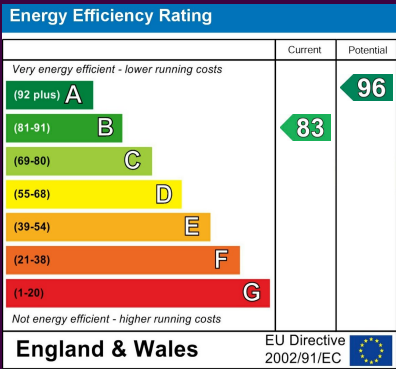
The Location



Home, Changes Everything



Kingsbridge Crescent



Council Tax Band: B
Tenure: Freehold

www.ingleby-homes.co.uk

Tel: 01642 671025

Email: sales@ingleby-homes.co.uk