

Lismore Gardens, Thornaby

TS17 8GP



Asking Price £137,000

- Attractive three bedroom semi-detached property
- Ideal first purchase or buy to let
- Modern Thornaby development
- Off road parking and enclosed rear garden
- Spacious kitchen/diner and separate living room
- Solar panels delivering reduced running costs and payments back from grid
- NO CHAIN

Home, Changes Everything





This attractive, three bedroom semi-detached property may prove to be of particular interest to the first time buyer, or those seeking an ideal buy-to-let.



Sensibly priced, early viewing comes strongly advised.

Fitted with solar panels, which deliver reduced 'day to day' running costs, and quarterly payments back from the grid to a tied-in tariff, advantages which a new owner will benefit from.

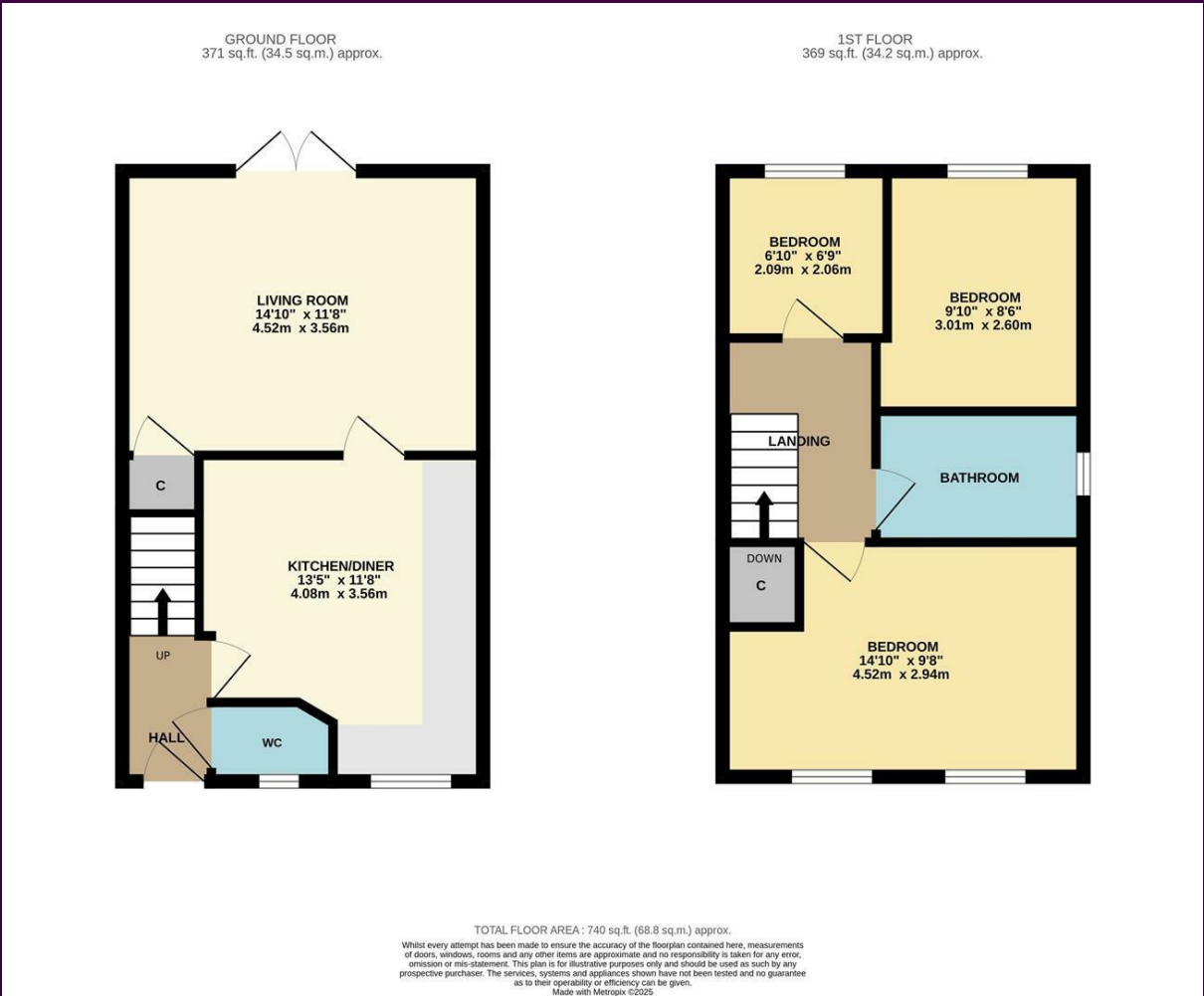


Situated on this popular, and modern Thornaby development, with off-road parking to the front, and an enclosed rear garden.

Briefly, the accommodation comprises an entrance hall, cloakroom/WC, generous fitted kitchen/diner and separate living room with 'French' doors to the garden in the ground floor. The first floor brings three bedrooms, and the family bathroom.



The Layout

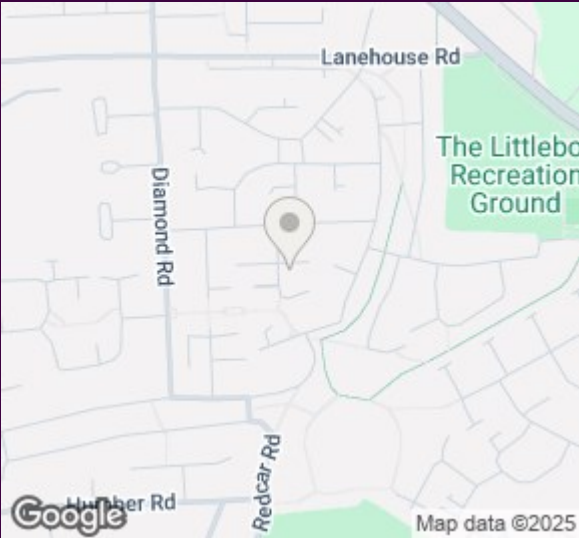


TOTAL FLOOR AREA: 740 sq.ft. (68.8 sq.m.) approx.

Whilst every attempt has been made to ensure the accuracy of the floorplan contained here, measurements of doors, windows, rooms and any other items are approximate and no responsibility is taken for any error, omission or mis-statement. This plan is for illustrative purposes only and should be used as such by any prospective purchaser. The services, systems and appliances shown have not been tested and no guarantee as to their operability or efficiency can be given.

Made with Metropix ©2025.

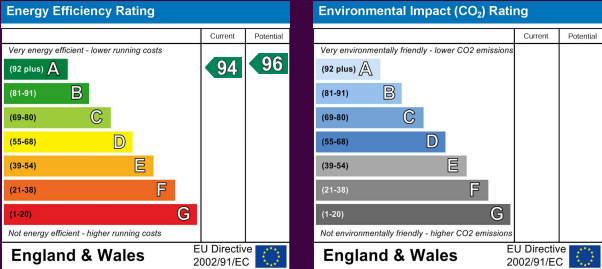
The Location



Home, Changes Everything



Lismore Gardens



Council Tax Band: B
Tenure: Freehold

www.ingleby-homes.co.uk

Tel: 01642 671025

Email: sales@ingleby-homes.co.uk