

Hembury Court, Ingleby Barwick

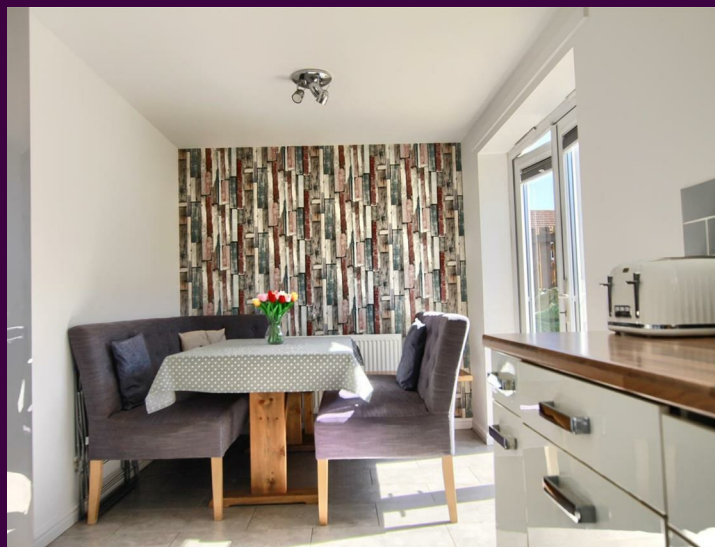
TS17 5NG



£195,000

- Cul-de-sac position within the favoured 'Rings' area
- Southerly rear garden, and block-paved, double width drive
- Three great bedrooms, 'Master' with robes and ensuite
- Spacious lounge, play room and impressive kitchen/diner
- Viewing advised

Home, Changes Everything





Enjoying a pleasant, cul-de-sac location within the favoured 'Rings' area of Ingleby Barwick, whilst boasting a generous 'south-facing' rear garden, and block-paved frontage.



Built to this popular semi-detached design by Persimmon, known for its spacious three bedrooms, 'Master' with ensuite.

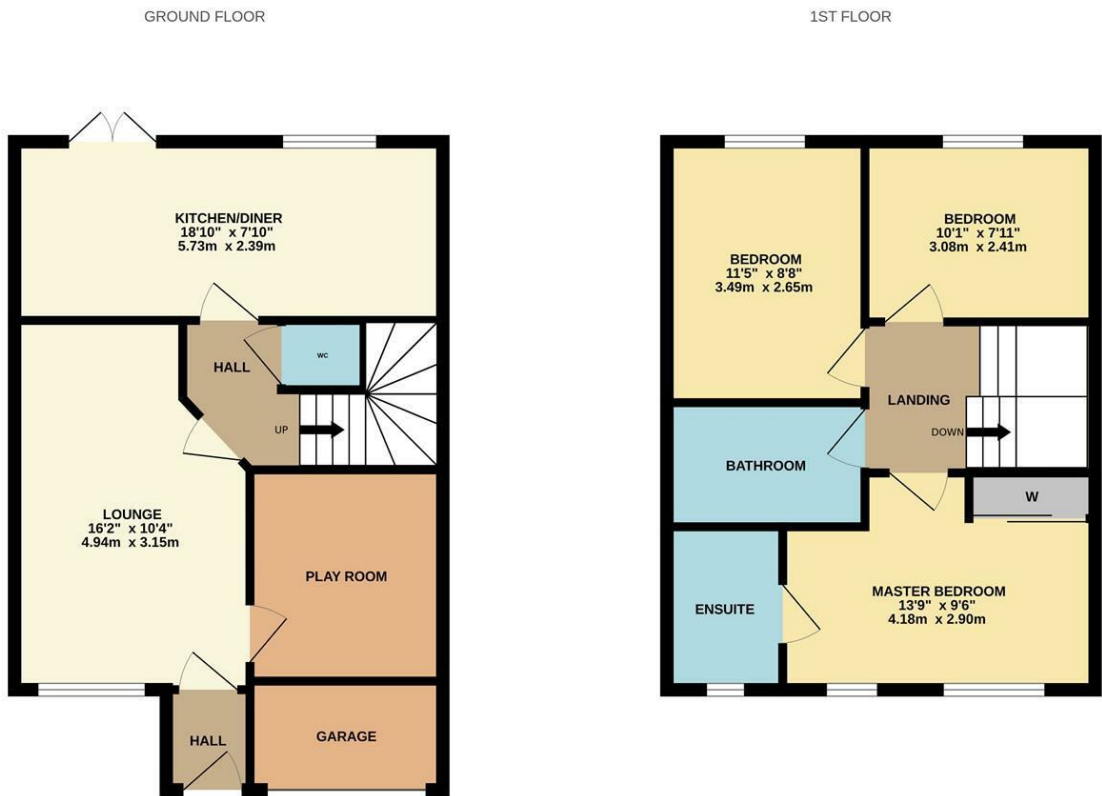


Modern and attractive, the internal accommodation briefly comprises an entrance hall, lounge, inner-hall, cloakroom/WC, and impressive open-plan kitchen/diner to the ground floor. The first floor brings three great bedrooms, 'Master' with fitted robes and ensuite, separate family bathroom. A further playroom is provided by way of an approx. 3/4 garage conversion, accessed from the lounge.



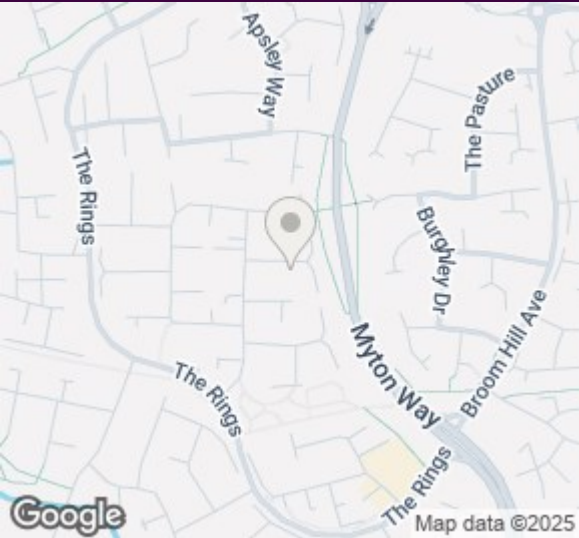
The rear garden backs onto bungalows, which provides great privacy and feels very open, making the most of the sunny aspect. Being laid mostly to lawn, with near end timber deck, and far-end patio.

The Layout



Whilst every attempt has been made to ensure the accuracy of the floorplan contained here, measurements of doors, windows, rooms and any other items are approximate and no responsibility is taken for any error, omission or mis-statement. This plan is for illustrative purposes only and should be used as such by any prospective purchaser. The services, systems and appliances shown have not been tested and no guarantee as to their operability or efficiency can be given.
Made with Metropix ©2025

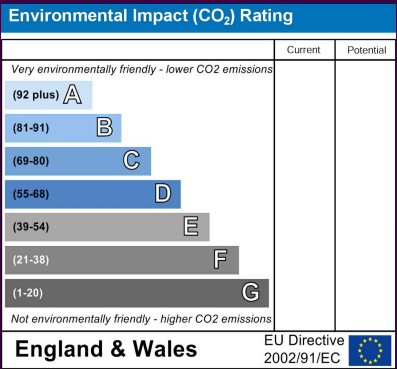
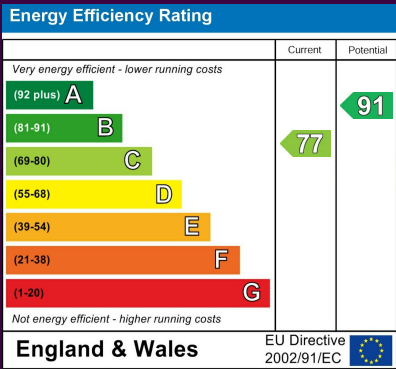
The Location



Home, Changes Everything



Hembury Court



Council Tax Band: C
Tenure: Freehold

www.ingleby-homes.co.uk

Tel: 01642 671025

Email: sales@ingleby-homes.co.uk