

# Horsely Way, Egglecliffe

TS16 0PU



Asking Price £349,995

- Desirable 'Hunters Edge' development, off Urray Nook Road
- Generous accommodation over three levels
- Stylishly presented, viewing a must
- Superb top-floor 'Master Suite' of large bedroom, dressing room and ensuite
- Lengthy side drive, garage and garden with re-laid patio
- Built to 'The Hyde' design by Charles Church
- Full-depth living room and impressive kitchen/diner



# Home, Changes Everything



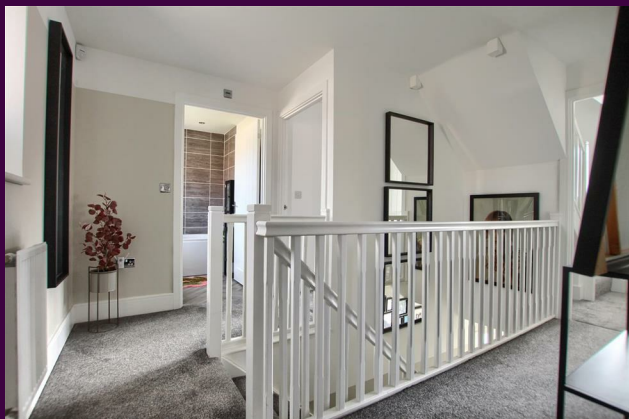




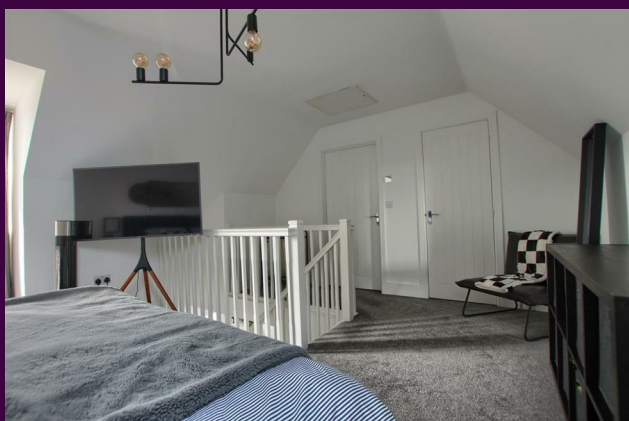
Built by 'Charles Church' to the impressive 'Hyde' design, and situated on the especially desirable 'Hunters Edge' development, tucked off Urray Nook Road in Eaglescliffe.

Almost brand new, little over 1 year old, this outstanding property delivers incredibly spacious accommodation over three generous levels. Stylish and striking, the internal accommodation is tastefully presented, with features such as the modern kitchen, full depth lounge, superb bathrooms and fabulous 'Master' level - are worthy of special mention.

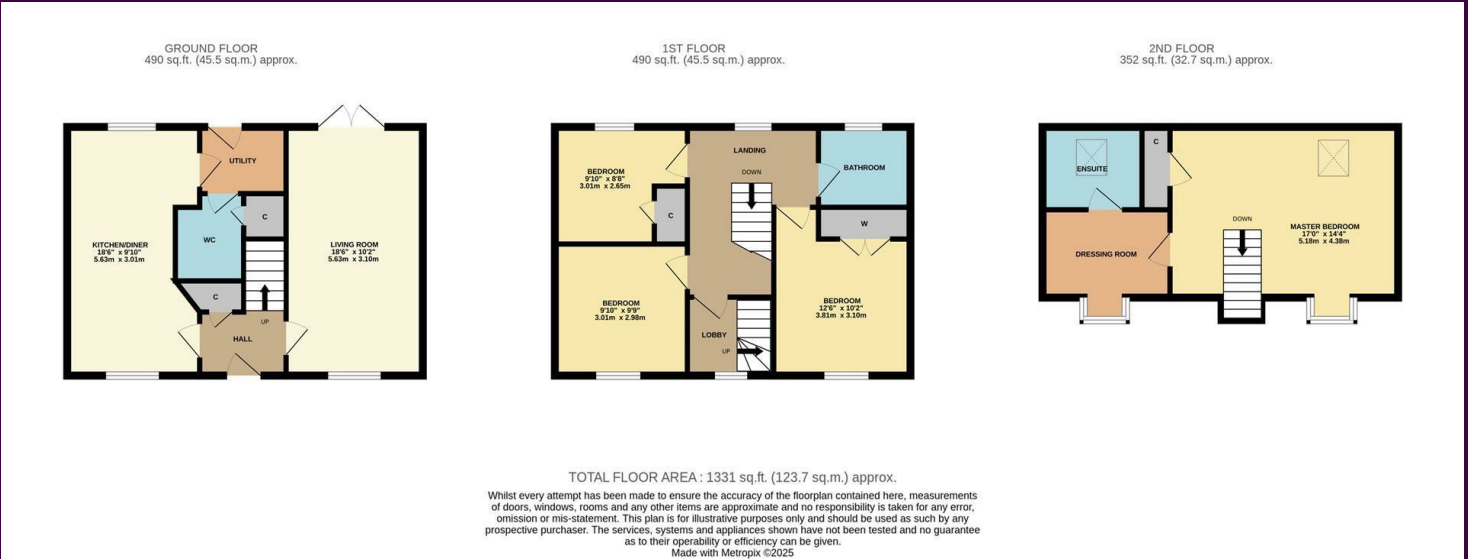
A lengthy side drive approaches the garage, whilst the the rear garden brings a newly-laid generous patio and path. Well positioned for sought-after schooling and amenities, this property is sure to attract the family purchaser.



Very briefly, the accommodation comprises an entrance hall, full-depth living room with 'French' doors to the garden, modern fitted kitchen/diner, coordinated utility and cloakroom/WC to the ground floor. The spacious first floor landing offers access to the family bathroom, and three of the great bedrooms, two with fitted robes/storage, along with a door to a lobby that brings the stairs to the second floor 'Master' level. Here you enter a large double bedroom, with dressing room and ensuite, a really impressive space.



# The Layout

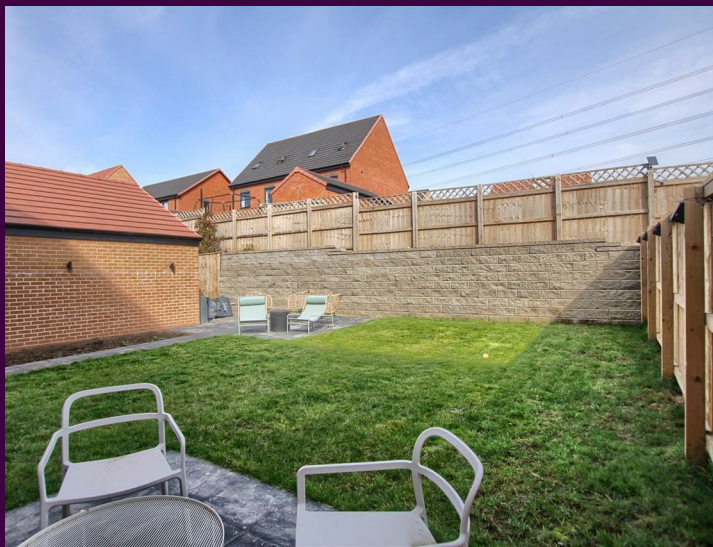
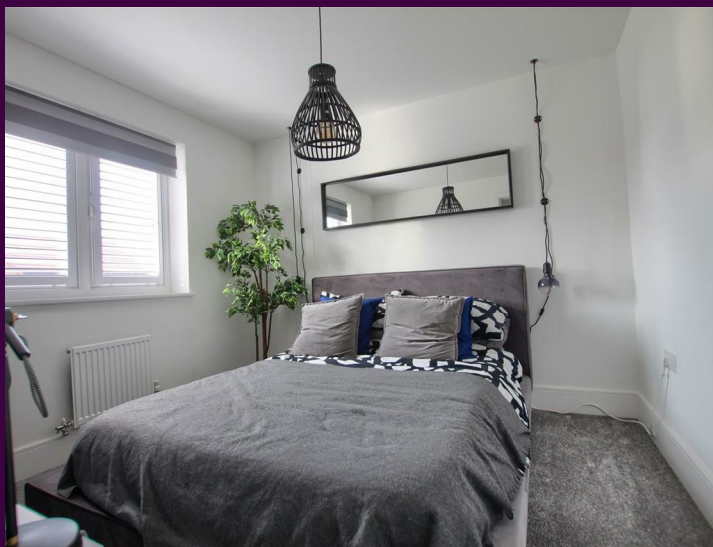
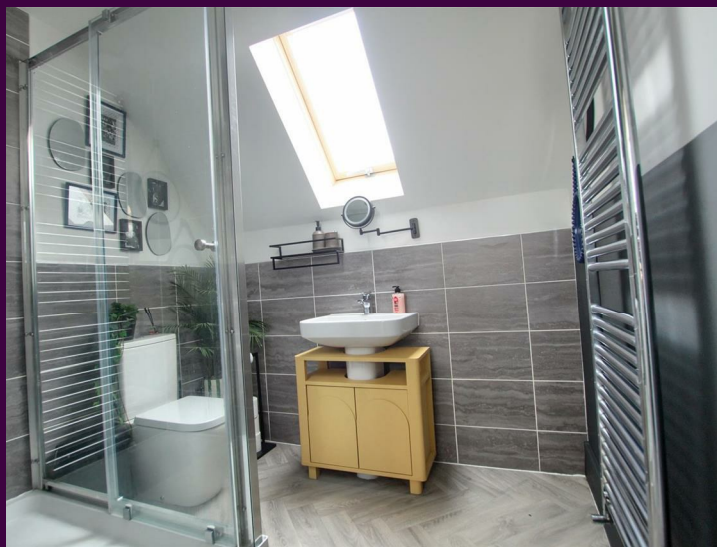


# The Location

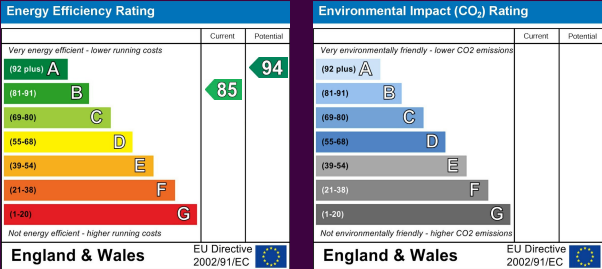




# Home, Changes Everything



# Horsely Way



Council Tax Band: E  
Tenure: Freehold

[www.ingleby-homes.co.uk](http://www.ingleby-homes.co.uk)

Tel: 01642 671025

Email: [sales@ingleby-homes.co.uk](mailto:sales@ingleby-homes.co.uk)