

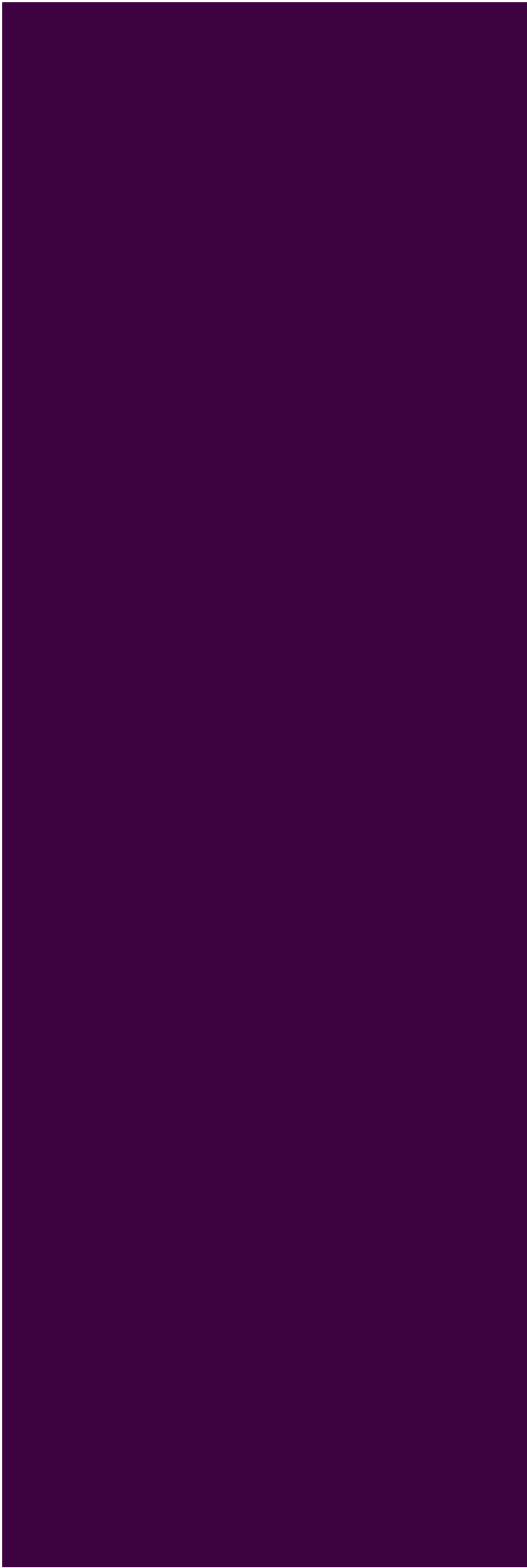
2 Hadleigh Walk  
Ingleby Barwick  
Stockton-On-Tees  
TS17 5GW



**IH** INGLEBY HOMES



2 Hadleigh Walk  
£675 PCM

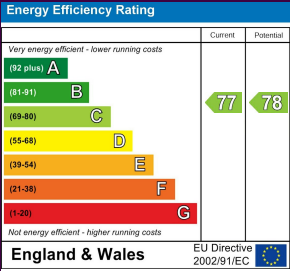


Local Authority

Council Tax Band

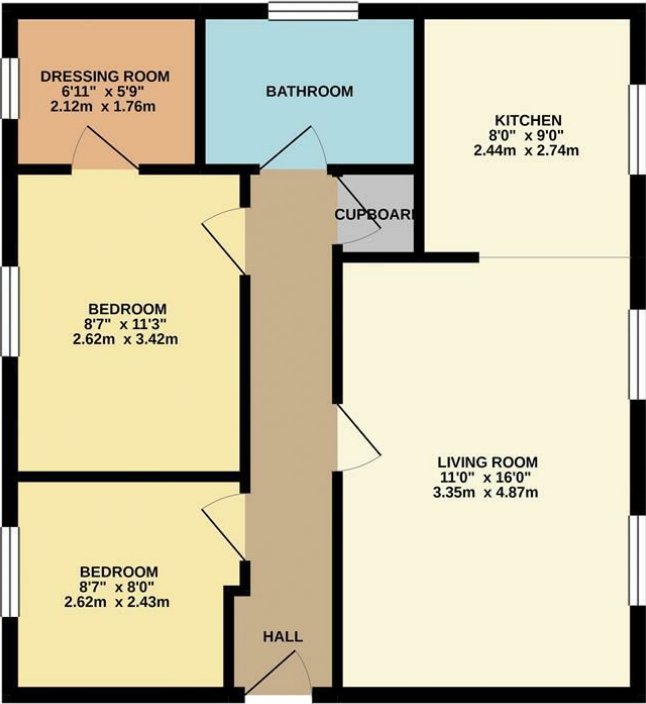
B

Directions



Agents Note: Whilst every care has been taken to prepare these particulars, they are for guidance purposes only. All measurements are approximate and are for general guidance purposes only and whilst every care has been taken to ensure their accuracy, they should not be relied upon and potential buyers/tenants are advised to recheck the measurements

GROUND FLOOR



Ingleby Homes  
6 Halegrove Court  
Stockton On Tees  
TS18 3DB

Contact

01642 671025

[karen@ingleby-homes.co.uk](mailto:karen@ingleby-homes.co.uk)

[www.ingleby-homes.co.uk](http://www.ingleby-homes.co.uk)

**IH** INGLEBY HOMES