

10 Thorington Gardens
Ingleby Barwick
Stockton-On-Tees
TS17 0UR



IH INGLEBY HOMES





10 Thorington Gardens
£220,000

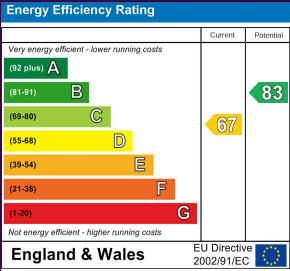


Local Authority

Council Tax Band

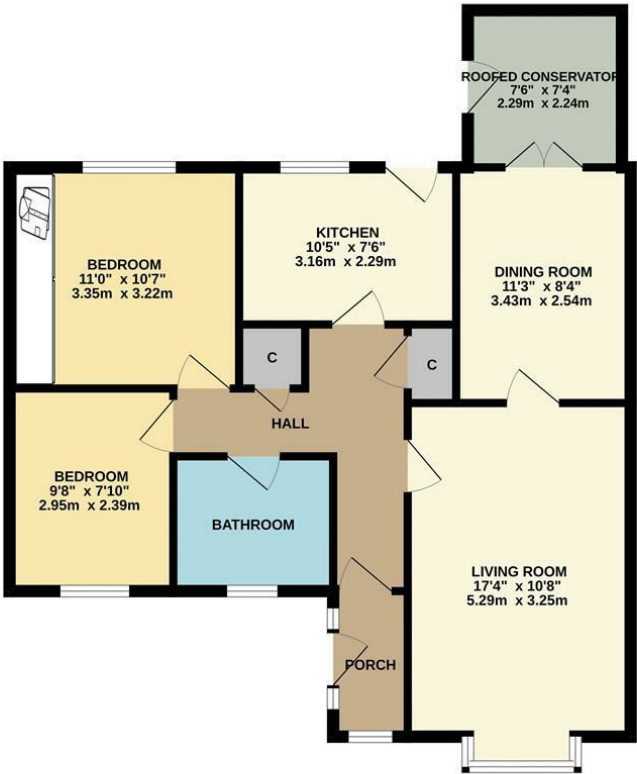
D

Directions



Agents Note: Whilst every care has been taken to prepare these particulars, they are for guidance purposes only. All measurements are approximate and are for general guidance purposes only and whilst every care has been taken to ensure their accuracy, they should not be relied upon and potential buyers/tenants are advised to recheck the measurements

GROUND FLOOR
762 sq.ft. (70.8 sq.m.) approx.



TOTAL FLOOR AREA: 762 sq.ft. (70.8 sq.m.) approx.
Whilst every attempt has been made to ensure the accuracy of the floorplan contained here, measurements of doors, windows, rooms and any other items are approximate and no responsibility is taken for any error, omission or misstatement. This plan is for illustrative purposes only and should be used as such by any prospective purchaser. The services, systems and appliances shown have not been tested and no guarantee as to their operability or efficiency can be given.
Made with Memopix ©2025



Ingleby Homes
6 Halegrove Court
Stockton On Tees
TS18 3DB

Contact

01642 671025

karen@ingleby-homes.co.uk

www.ingleby-homes.co.uk

IH INGLEBY HOMES