

28 Hidcote Gardens
Ingleby Barwick
Stockton-On-Tees
TS17 0XU



IH INGLEBY HOMES





28 Hidcote Gardens
£269,990

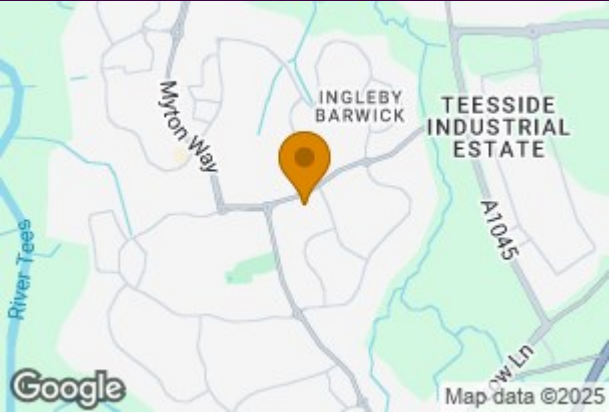
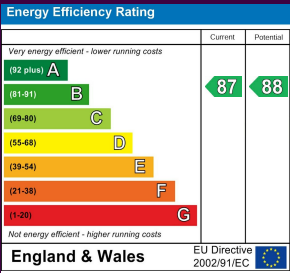


Local Authority

Council Tax Band

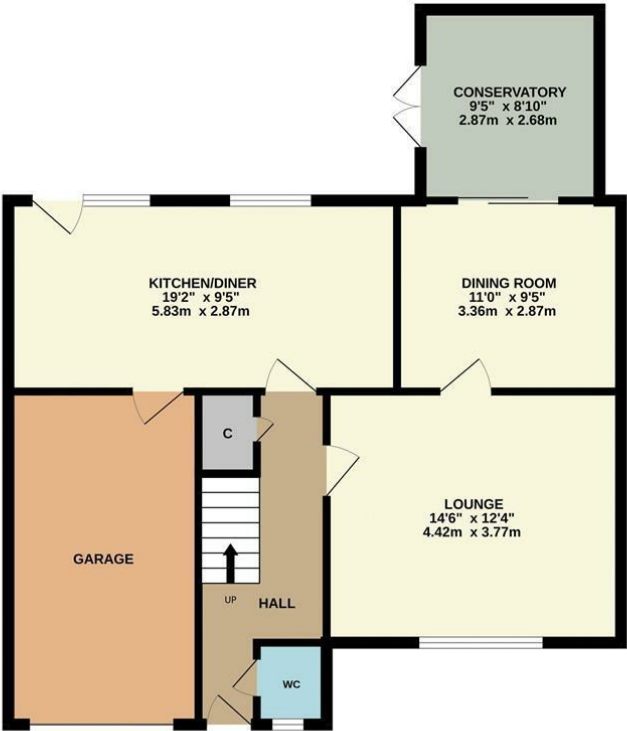
D

Directions

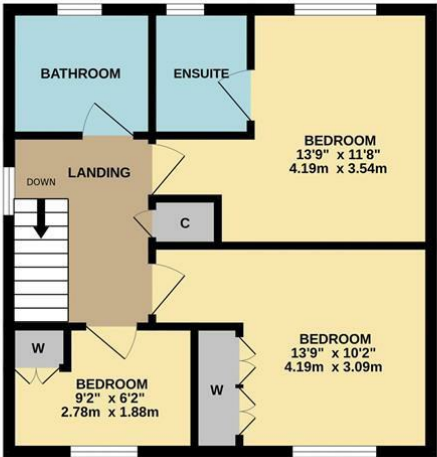


Agents Note: Whilst every care has been taken to prepare these particulars, they are for guidance purposes only. All measurements are approximate and are for general guidance purposes only and whilst every care has been taken to ensure their accuracy, they should not be relied upon and potential buyers/tenants are advised to recheck the measurements

GROUND FLOOR
803 sq.ft. (74.6 sq.m.) approx.



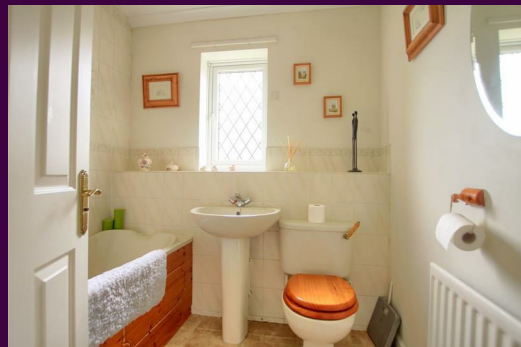
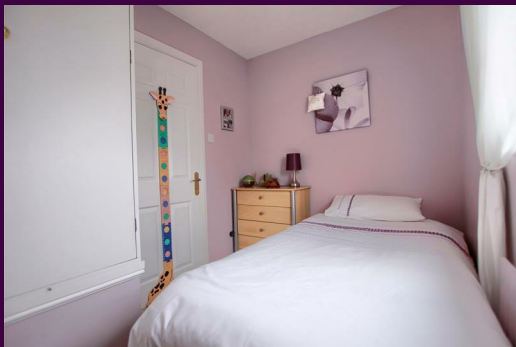
1ST FLOOR
453 sq.ft. (42.1 sq.m.) approx.



TOTAL FLOOR AREA : 1255 sq.ft. (116.6 sq.m.) approx.
Whilst every attempt has been made to ensure the accuracy of the floorplan contained here, measurements of doors, windows, rooms and any other items are approximate and no responsibility is taken for any error, omission or mis-statement. This plan is for illustrative purposes only and should be used as such by any prospective purchaser. The services, systems and appliances shown have not been tested and no guarantee as to their operability or efficiency can be given.
Made with Metropix ©2025



Ingleby Homes
6 Halegrove Court
Stockton On Tees
TS18 3DB



Contact

01642 671025

karen@ingleby-homes.co.uk

www.ingleby-homes.co.uk

IH INGLEBY HOMES