

Carrawburgh Road



£178,000

Three double bedrooms, 'Master' with ensuite

Sought-after 'Rings' development of Ingleby Barwick

Southerly enclosed garden, off-road parking

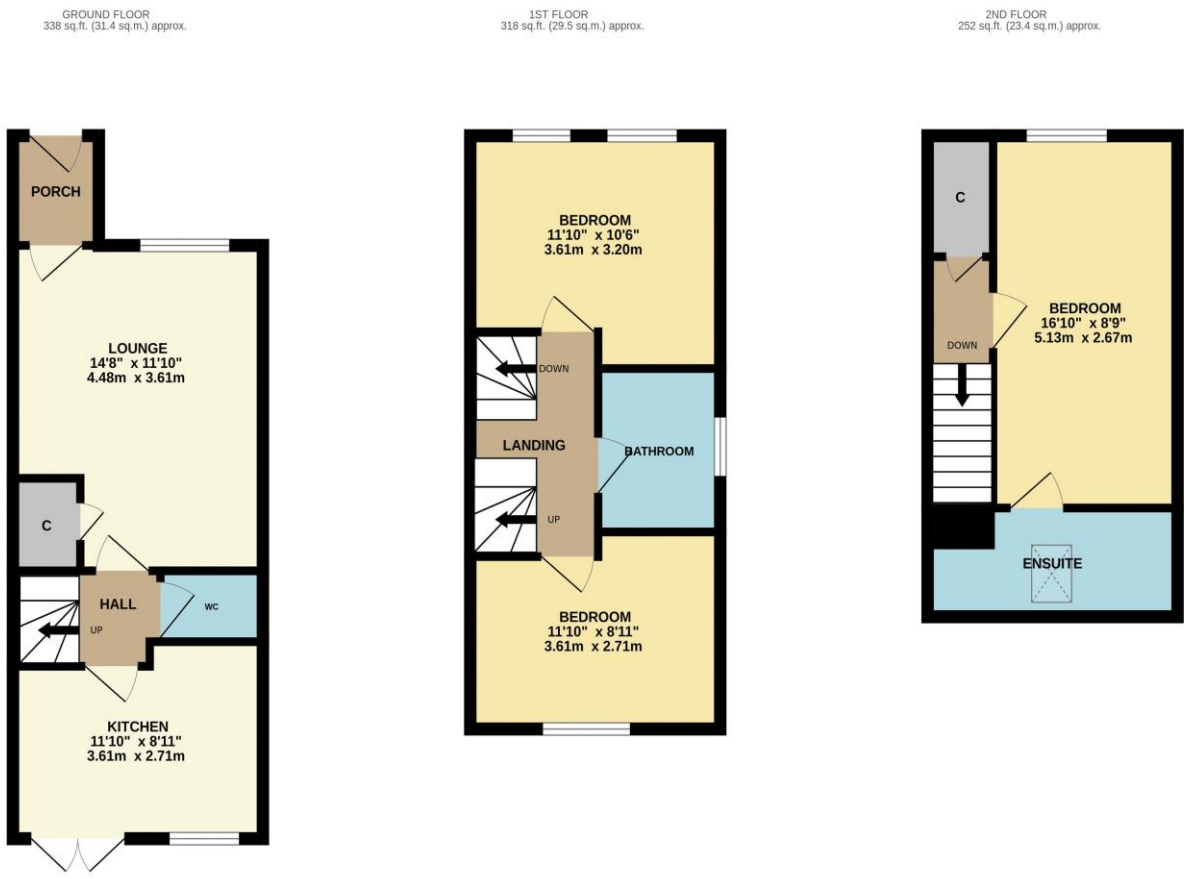
Accommodation over three floors



Available with 'No Forward Chain' - This attractive and modern property is built to the very popular 'Souter' design by Persimmon Homes. Delivering deceptively spacious living accommodation over three floors.

Briefly comprising an entrance hall, lounge, inner hall, cloakroom/WC and smart kitchen/diner on the ground floor. Two of the three double bedrooms are found on the first floor, along with the family bathroom, whilst the third is available to the second floor, with impressive ensuite. A fence enclosed rear garden is southerly, with lawn and patio, whilst a front drive allows off-road parking.

Home, changes everything



TOTAL FLOOR AREA : 907 sq.ft. (84.3 sq.m.) approx.

Whilst every attempt has been made to ensure the accuracy of the floorplan contained here, measurements of doors, windows, rooms and any other items are approximate and no responsibility is taken for any error, omission or mis-statement. This plan is for illustrative purposes only and should be used as such by any prospective purchaser. The services, systems and appliances shown have not been tested and no guarantee as to their operability or efficiency can be given.
Made with Metropix 6/2024

Tenure:	Freehold
Council Tax Band:	C
EPC Rating:	C



www.ingleby-homes.co.uk