

Hilden Park



£170,000

Spacious accommodation delivered over three levels

Three good bedrooms, 'Master' with ensuite

Favoured Broomhill area of Ingleby Barwick, ideal for schooling

Drive, garage, and enclosed rear garden

No forward chain

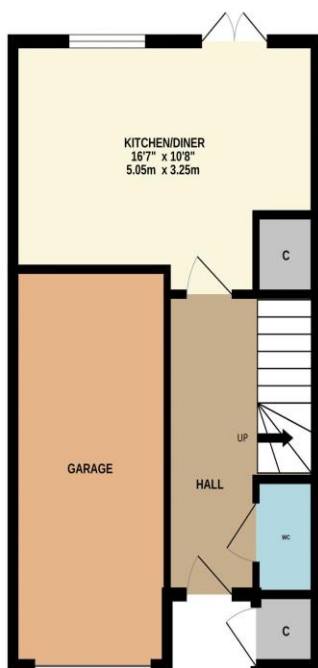


Located within this popular 'Broom Hill' area of Ingleby Barwick, and delivering spacious accommodation over three floors, internal inspection is strongly advised. Close to fantastic local amenities, and 'highly thought of' schooling, this is a property that may suit the younger family. A drive to the front allows off-road parking and approached the single, integral garage, with a fence enclosed garden to the rear.

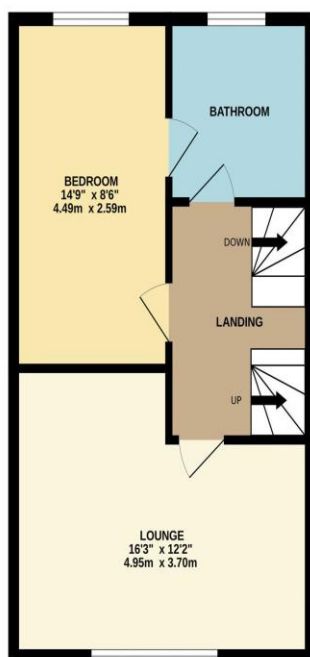
Internally, the accommodation very briefly comprises an entrance hall, cloakroom/WC, and spacious open-plan kitchen/diner to the ground floor. The first floor brings a generous living room, bedroom and connected family bathroom, which can be accessed independently from the landing. Two more bedrooms are found on the second floor, one being the 'Master' with ensuite. Available with 'No Forward Chain'.

Home, changes everything

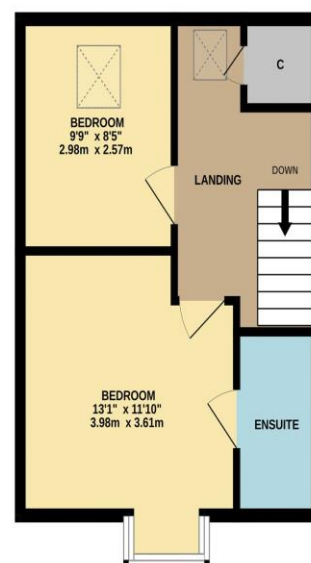
GROUND FLOOR



1ST FLOOR



2ND FLOOR

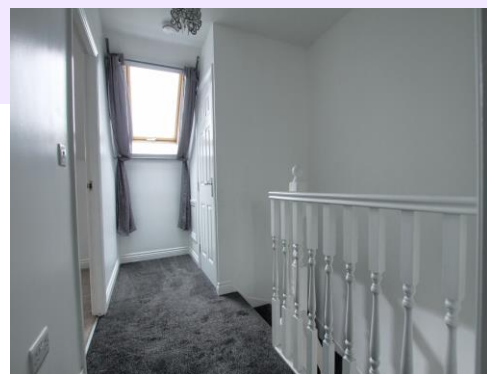


Whilst every attempt has been made to ensure the accuracy of the floorplan contained here, measurements of doors, windows, rooms and any other items are approximate and no responsibility is taken for any error, omission or mis-statement. This plan is for illustrative purposes only and should be used as such by any prospective purchaser. The services, systems and appliances shown have not been tested and no guarantee as to their operability or efficiency can be given.
Made with Metropix ©2024

Tenure: Freehold

Council Tax Band: C

EPC Rating: C



www.ingleby-homes.co.uk