

Hanover Court



£135,000

Set within a pleasant cul-de-sac of bungalows in Norton area

Can be sold as seen, complete with furniture

Generous front, side and rear gardens, off-road parking

Close to great local amenities and 'The Glebe' Primary School

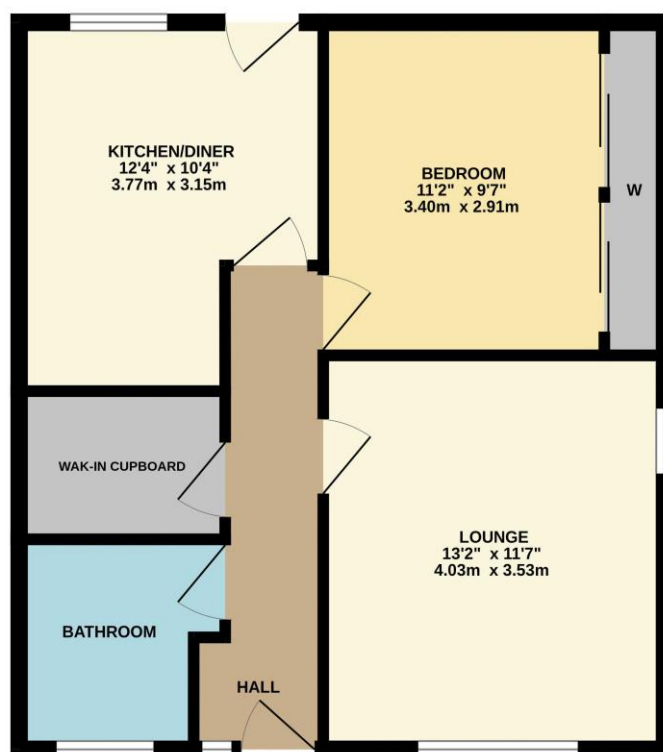


This cared for bungalow is available for sale, complete with furniture, on a 'sold as seen' basis, should that suit the purchaser, or, can easily be cleared if required. Located in this pleasant cul-de-sac of similar properties, traffic restricted to the front, with rear off-road parking, generous front and side gardens, and rear garden.

Benefiting from combi-boiler gas central heating and full UPVC double glazing, whilst being pleasantly decorated and very well presented, internal viewing is strongly advised. Very briefly, the accommodation comprises an entrance hall with large walk-in-cupboard, shower room, spacious lounge, double bedroom with fitted mirror-robes, and 'L' shaped kitchen/diner. The front and side gardens are laid mainly to lawn with established planting and hedge borders, the rear being paved - fence enclosed, with timber shed. This is a property that may suit the retiree, or those looking for an ideal buy-to-let.

Home, changes everything

GROUND FLOOR
534 sq.ft. (49.6 sq.m.) approx.



TOTAL FLOOR AREA : 534 sq.ft. (49.6 sq.m.) approx.

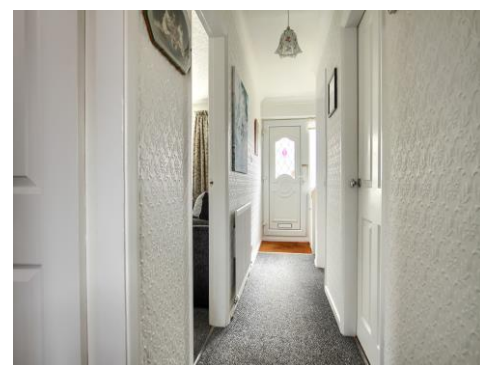
Whilst every attempt has been made to ensure the accuracy of the floorplan contained here, measurements of doors, windows, rooms and any other items are approximate and no responsibility is taken for any error, omission or mis-statement. This plan is for illustrative purposes only and should be used as such by any prospective purchaser. The services, systems and appliances shown have not been tested and no guarantee as to their operability or efficiency can be given.

Made with Metroplan ©2024

Tenure: Freehold

Council Tax Band: A

EPC Rating: D



www.ingleby-homes.co.uk