

# Greensforge Drive



Modern, three storey 'Town House'

Favoured 'Rings' location within Ingleby Barwick

Attractive, landscaped rear garden

Three double bedrooms, 'Master' with ensuite

No forward chain

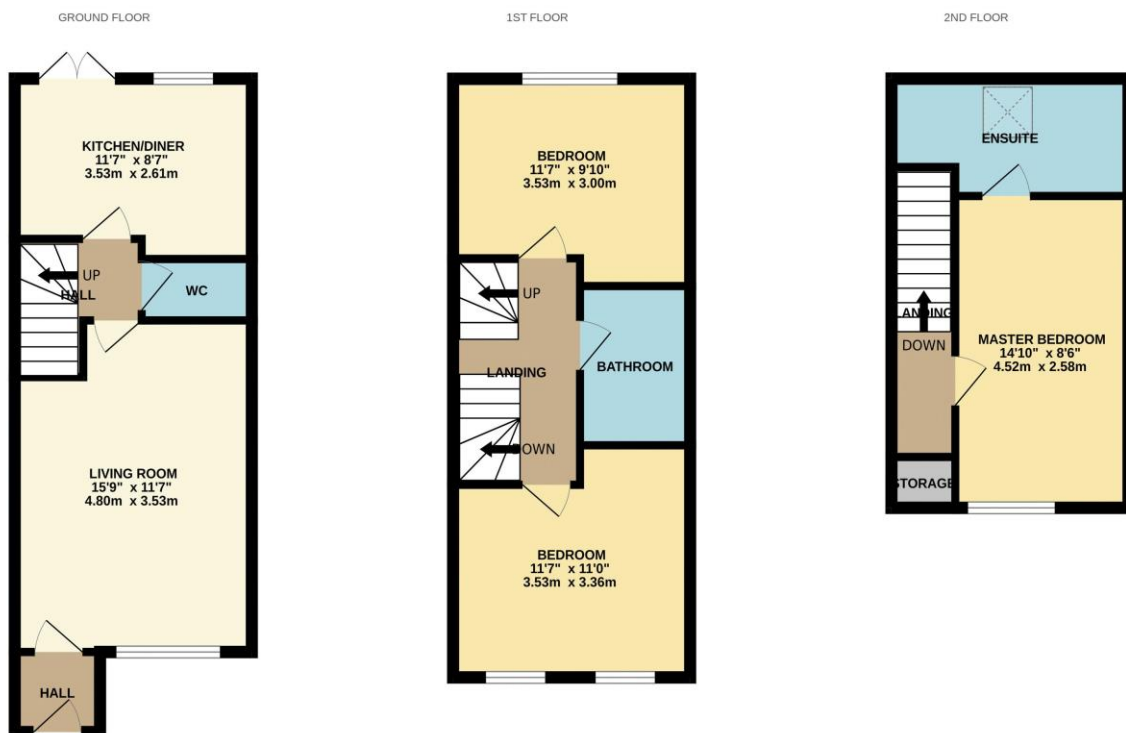
£175,000





This modern, three storey 'Town House' is built to the popular 'Souter' design by Persimmon. Improved with an impressive landscaped rear garden which enjoys a private rear outlook.

Modern and available with 'No Forward Chain' - the internal accommodation comprises an entrance hall, lounge, inner hall, cloakroom/WC and kitchen/diner to the ground floor. The first floor brings two double bedrooms, the rear, with fitted robes, and the separate family bathroom. A further double room with ensuite, is available to the second floor.



Whilst every attempt has been made to ensure the accuracy of the floorplan contained here, measurements of doors, windows, rooms and any other items are approximate and no responsibility is taken for any error, omission or mis-statement. This plan is for illustrative purposes only and should be used as such by any prospective purchaser. The services, systems and appliances shown have not been tested and no guarantee as to their operability or efficiency can be given.  
Made with Metropix ©2024



# “The Ingleby Barwick Experts”



Tenure: Freehold

Council Tax Band: C

EPC Rating: TBC



AGENTS NOTE: Every care has been taken with the preparation of these details, but they are for general guidance only. Measurements and dimensions are approximate, and any fixtures or fittings shown in photography does not infer that they are to be included within the sale. The agent has not tested any appliances or supplies and professional verification of these should be sought prior to purchase if required. These particulars do not constitute a contract or part of a contract.