

# Verbeia Road



A fine example of its kind, built to the popular 'Roseberry' design

Stylish and attractive throughout, viewing advised

Impressive, newly refitted ensuite to the 'Master' bedroom

Sought after 'Rings' development within Ingleby Barwick

Spacious lounge, separate, superb open-plan kitchen/diner

**£259,995**

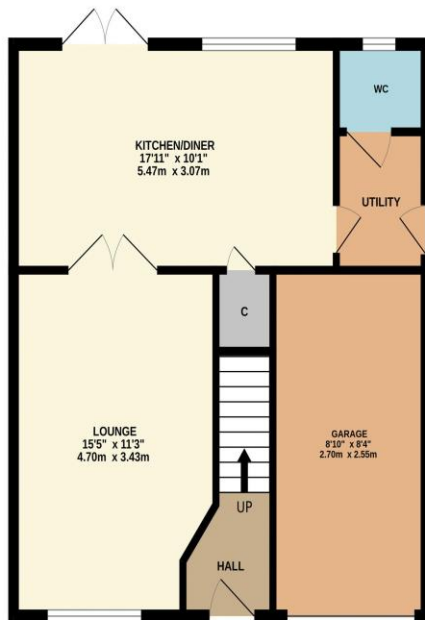




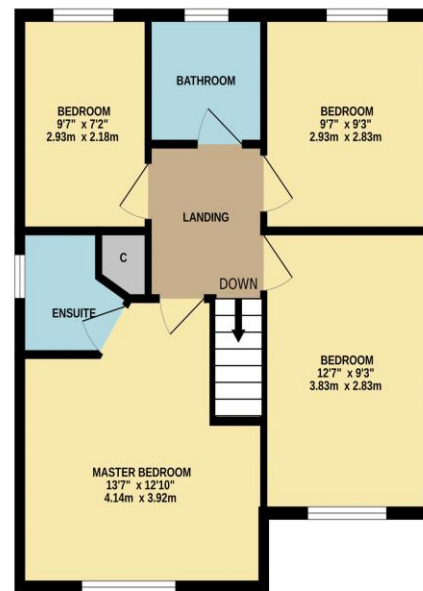
Located within this newer area of the popular 'Rings' development, of Ingleby Barwick, this impressive, four bedroom detached property certainly merits early inspection. Built to the desirable 'Roseberry' design by Persimmon, whilst being stylish and attractive throughout, with the newly refitted ensuite being a feature worthy of special mention.

Especially well presented, the internal accommodation very briefly comprises an entrance hall, lounge - with double doors opening to the superb kitchen/diner, utility and cloakroom/WC to the ground floor. The first floor delivers four good bedrooms, 'Master' with newly fitted, stylish ensuite, separate family bathroom. A double width front drive allows off-road parking, approaching the integral garage, along side the front garden being laid to lawn. The fence enclosed rear garden enjoys a sunny aspect, with large near-end patio, and generous lawn.

GROUND FLOOR



1ST FLOOR



Whilst every attempt has been made to ensure the accuracy of the floorplan contained here, measurements of doors, windows, rooms and any other items are approximate and no responsibility is taken for any error, omission or mis-statement. This plan is for illustrative purposes only and should be used as such by any prospective purchaser. The services, systems and appliances shown have not been tested and no guarantee as to their operability or efficiency can be given.  
Made with Metropix 62024



Multi-Award Wining

# “The Ingleby Barwick Experts”



Tenure: Freehold

Council Tax Band: D

EPC Rating: B



AGENTS NOTE: Every care has been taken with the preparation of these details, but they are for general guidance only. Measurements and dimensions are approximate, and any fixtures or fittings shown in photography does not infer that they are to be included within the sale. The agent has not tested any appliances or supplies and professional verification of these should be sought prior to purchase if required. These particulars do not constitute a contract or part of a contract.